

Product datasheet for **TA351438**

Neurofilament (NEFM) Rabbit Polyclonal Antibody

Product data:

Product Type:	Primary Antibodies
Applications:	IHC, WB
Recommended Dilution:	WB: 200-1000 WB positive control: 293T cells IHC: 25-100 Positive control: Human brain Predicted cell location: Cytoplasm
Reactivity:	Human, Mouse, Rat
Host:	Rabbit
Isotype:	IgG
Clonality:	Polyclonal
Immunogen:	Synthetic peptide of human NEFM
Formulation:	pH7.4 PBS, 0.05% NaN ₃ , 40% Glycerol
Concentration:	lot specific
Purification:	Antigen affinity purification
Conjugation:	Unconjugated
Storage:	Store at -20°C as received.
Stability:	Stable for 12 months from date of receipt.
Predicted Protein Size:	102 kDa
Gene Name:	neurofilament, medium polypeptide
Database Link:	NP_005373 Entrez Gene 18040 Mouse Entrez Gene 24588 Rat Entrez Gene 4741 Human P07197



[View online »](#)

Background:

Neurofilaments are type IV intermediate filament heteropolymers composed of light, medium, and heavy chains. Neurofilaments comprise the axoskeleton and functionally maintain neuronal caliber. They may also play a role in intracellular transport to axons and dendrites. This gene encodes the medium neurofilament protein. This protein is commonly used as a biomarker of neuronal damage. Alternative splicing results in multiple transcript variants encoding distinct isoforms.

Synonyms:

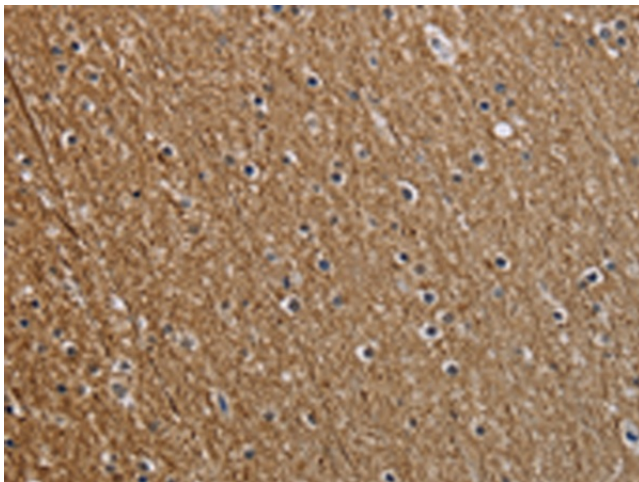
NEF3; NF-M; NFM

Protein Pathways:

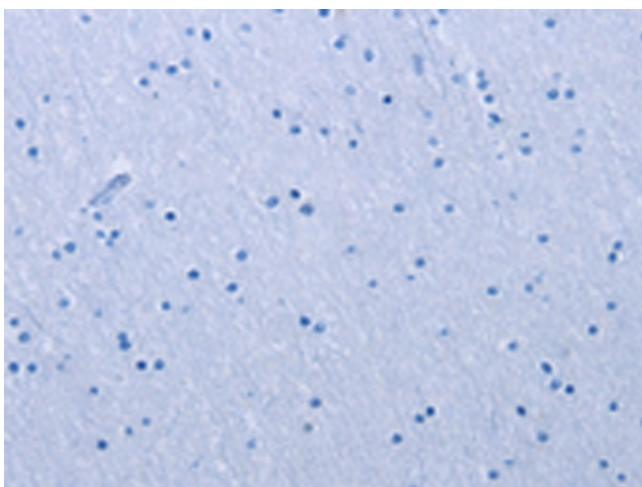
Amyotrophic lateral sclerosis (ALS)

Product images:


Gel: 6%SDS-PAGE
 Lysate: 40 µg
 Lane: 293T cells
 Primary antibody: TA351438 (NEFM Antibody) at dilution 1/250
 Secondary antibody: Goat anti rabbit IgG at 1/8000 dilution
 Exposure time: 1 minutes



Immunohistochemistry of paraffin-embedded Human brain tissue using TA351438 (NEFM Antibody) at dilution 1/25 (Original magnification: ×200)



Immunohistochemistry of paraffin-embedded Human brain tissue using TA351438 (NEFM Antibody) at dilution 1/25, treated with synthetic peptide. (Original magnification: $\times 200$)