

Product datasheet for **TA351434**

Nucleobindin 2 (NUCB2) Rabbit Polyclonal Antibody

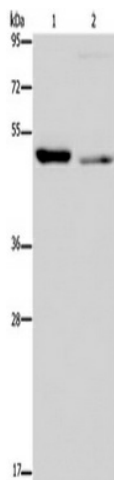
Product data:

Product Type:	Primary Antibodies
Applications:	IHC, WB
Recommended Dilution:	ELISA: 1000-2000, WB: 200-1000, IHC: 50-200
Reactivity:	Human
Host:	Rabbit
Isotype:	IgG
Clonality:	Polyclonal
Immunogen:	Synthetic peptide of human NUCB2
Formulation:	pH7.4 PBS, 0.05% NaN ₃ , 40% Glycerol
Concentration:	lot specific
Purification:	Antigen affinity purification
Conjugation:	Unconjugated
Storage:	Store at -20°C as received.
Stability:	Stable for 12 months from date of receipt.
Predicted Protein Size:	50 kDa
Gene Name:	nucleobindin 2
Database Link:	NP_005004 Entrez Gene 4925 Human P80303
Background:	This gene encodes a protein with a suggested role in calcium level maintenance, eating regulation in the hypothalamus, and release of tumor necrosis factor from vascular endothelial cells. This protein binds calcium and has EF-folding domains.
Synonyms:	HEL-S-109; NEFA
Protein Families:	Secreted Protein, Transmembrane

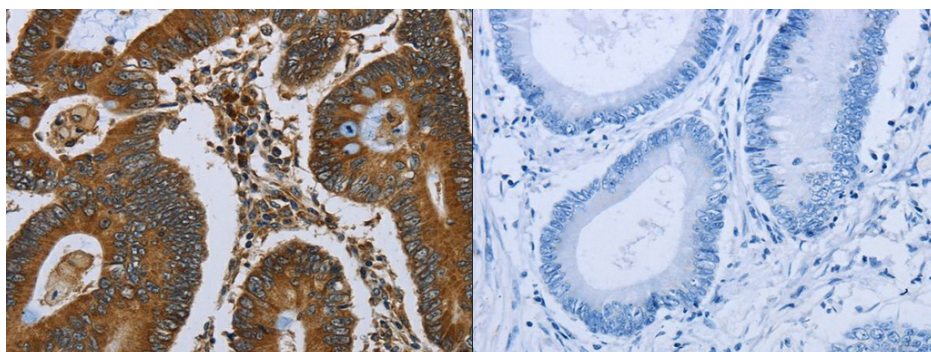


[View online »](#)

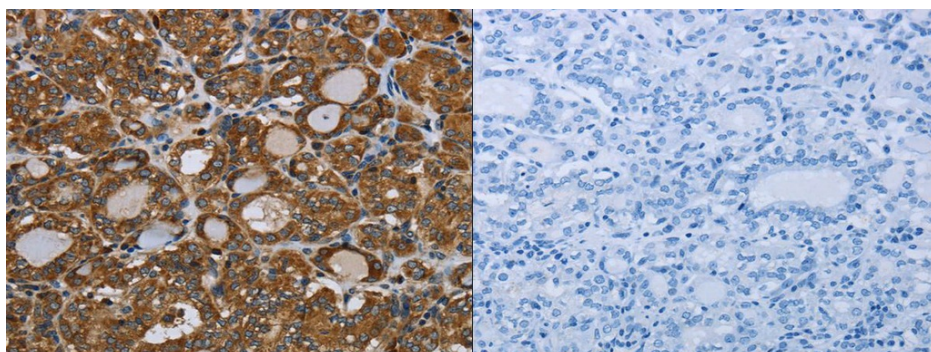
Product images:



Gel: 8%SDS-PAGE, Lysate: 40 ug, Lane 1-2: Human testis tissue, Hela cells, Primary antibody: (NUCB2 Antibody) at dilution 1/300, Secondary antibody: Goat anti rabbit IgG at 1/8000 dilution, Exposure time: 2 minutes



The image on the left is immunohistochemistry of paraffin-embedded Human colon cancer tissue using (NUCB2 Antibody) at dilution 1/40, on the right is treated with synthetic peptide. (Original magnification: ×200)



The image on the left is immunohistochemistry of paraffin-embedded Human thyroid cancer tissue using (NUCB2 Antibody) at dilution 1/40, on the right is treated with synthetic peptide. (Original magnification: ×200)