

## Product datasheet for **TA351432**

### NDUFAF4 Rabbit Polyclonal Antibody

#### Product data:

Product Type:	Primary Antibodies
Applications:	IHC, WB
Recommended Dilution:	WB: 200-1000 WB positive control: Jurkat, HeLa and K562 cells IHC: 50-200 Positive control: Human ovarian cancer Predicted cell location: Cytoplasm
Reactivity:	Human
Host:	Rabbit
Isotype:	IgG
Clonality:	Polyclonal
Immunogen:	Synthetic peptide of human NDUFAF4
Formulation:	pH7.4 PBS, 0.05% NaN <sub>3</sub> , 40% Glycerol
Concentration:	lot specific
Purification:	Antigen affinity purification
Conjugation:	Unconjugated
Storage:	Store at -20°C as received.
Stability:	Stable for 12 months from date of receipt.
Predicted Protein Size:	20 kDa
Gene Name:	NADH:ubiquinone oxidoreductase complex assembly factor 4
Database Link:	<a href="#">NP_054884</a> <a href="#">Entrez Gene 29078 Human</a> <a href="#">Q9P032</a>

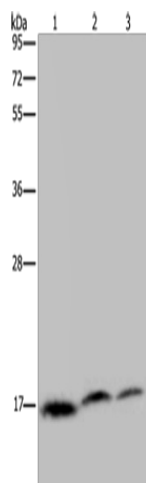
**Background:** NADH:ubiquinone oxidoreductase (complex I) catalyzes the transfer of electrons from NADH to ubiquinone (coenzyme Q) in the first step of the mitochondrial respiratory chain, resulting in the translocation of protons across the inner mitochondrial membrane. This gene encodes a complex I assembly factor. Mutations in this gene are a cause of mitochondrial complex I deficiency.



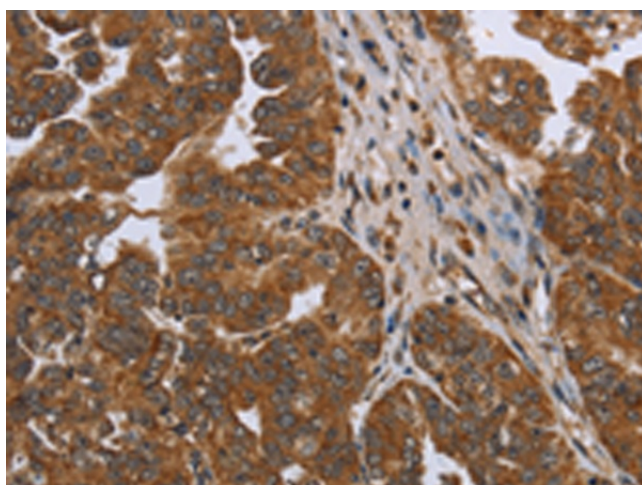
[View online »](#)

Synonyms: bA22L21.1; C6orf66; HRPAP20; HSPC125; My013

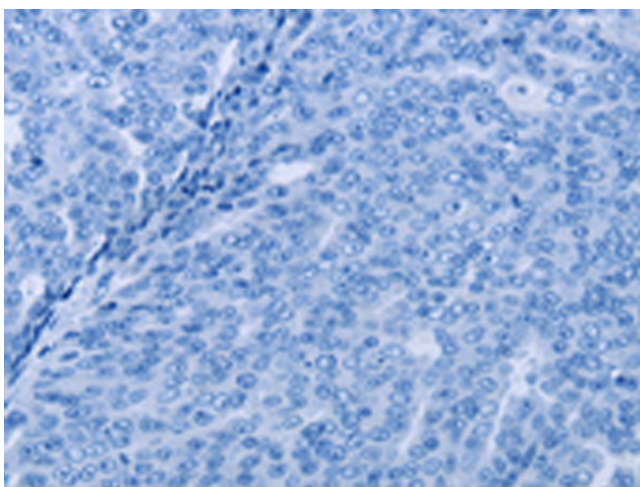
**Product images:**



Gel: 10%SDS-PAGE  
 Lysate: 40 µg  
 Lane 1-3: Jurkat cells  
 HeLa cells  
 K562 cells  
 Primary antibody: TA351432 (NDUFAF4 Antibody) at dilution 1/350  
 Secondary antibody: Goat anti rabbit IgG at 1/8000 dilution  
 Exposure time: 5 seconds



Immunohistochemistry of paraffin-embedded Human ovarian cancer tissue using TA351432 (NDUFAF4 Antibody) at dilution 1/50 (Original magnification: ×200)



Immunohistochemistry of paraffin-embedded Human ovarian cancer tissue using TA351432 (NDUFAF4 Antibody) at dilution 1/50, treated with synthetic peptide. (Original magnification: ×200)