

Product datasheet for **TA351431**

NDUFAB1 Rabbit Polyclonal Antibody

Product data:

Product Type:	Primary Antibodies
Applications:	IHC
Recommended Dilution:	IHC: 100-300 Positive control: Human lung cancer Predicted cell location: Cytoplasm and Nucleus
Reactivity:	Human, Mouse
Host:	Rabbit
Isotype:	IgG
Clonality:	Polyclonal
Immunogen:	Synthetic peptide of human NDUFAB1
Formulation:	pH7.4 PBS, 0.05% NaN ₃ , 40% Glycerol
Concentration:	lot specific
Purification:	Antigen affinity purification
Conjugation:	Unconjugated
Storage:	Store at -20°C as received.
Stability:	Stable for 12 months from date of receipt.
Gene Name:	NADH:ubiquinone oxidoreductase subunit AB1
Database Link:	NP_004994 Entrez Gene 4706 Human O14561



[View online »](#)

Background:

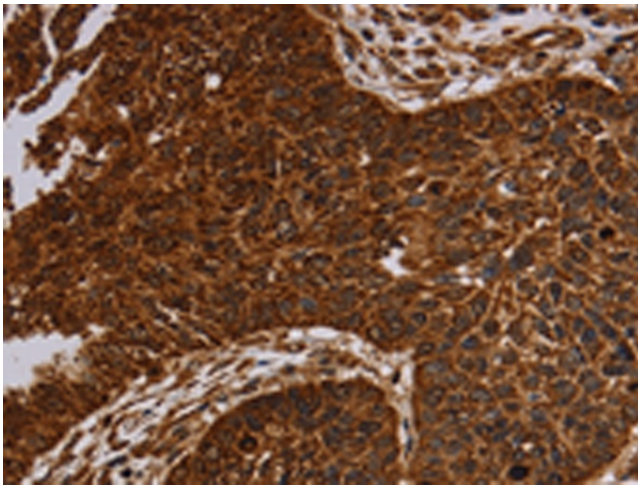
NDUFAB1 (NADH dehydrogenase (ubiquinone) 1, alpha/beta subcomplex, 1), also known as SDAP, ACP (acyl carrier protein) or FASN2A, is one of about 45 subunits comprising Complex I of the oxidative phosphorylation electron transport chain. Consisting of 156 amino acids and localizing to mitochondria, NDUFAB1 functions as an accessory subunit of the multi-protein mitochondrial membrane respiratory chain NADH dehydrogenase complex (known as Complex I). Complex I plays an important role in the transfer of electrons from NADH to the respiratory chain, a process that is essential for cellular respiration. NDUFAB1 contains one acyl carrier domain and is encoded by a gene that maps to human chromosome 16p12.2 and mouse chromosome 7 F3.

Synonyms:

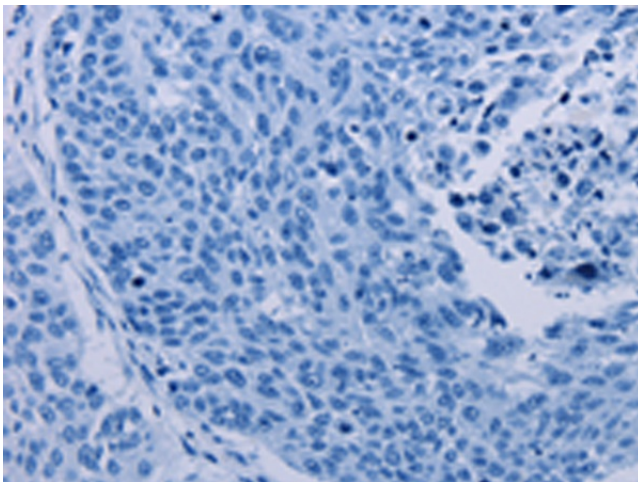
ACP; FASN2A; SDAP

Protein Pathways:

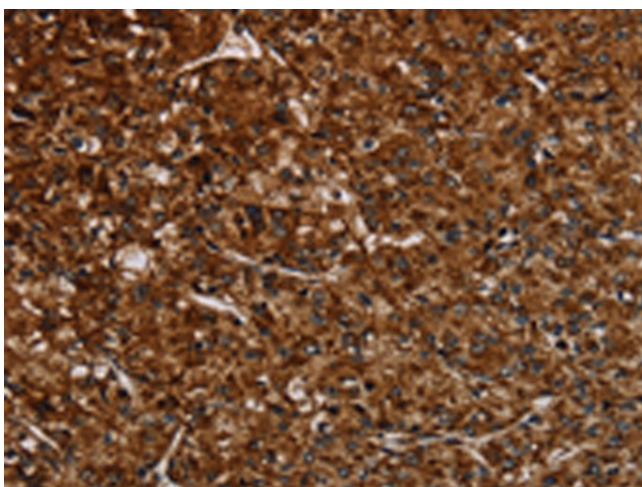
Alzheimer's disease, Huntington's disease, Metabolic pathways, Oxidative phosphorylation, Parkinson's disease

Product images:

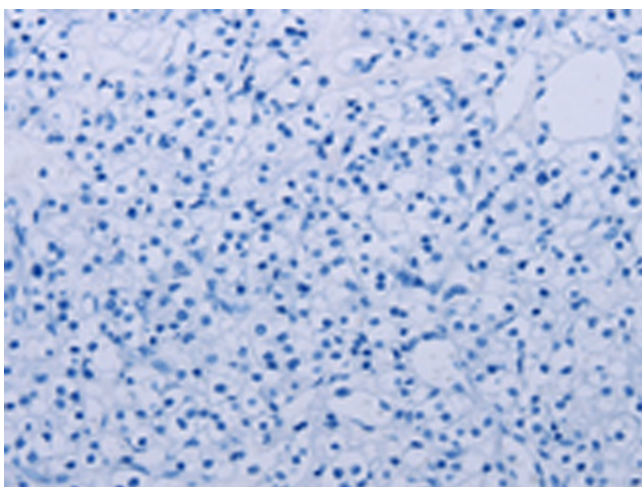
Immunohistochemistry of paraffin-embedded Human lung cancer tissue using TA351431 (NDUFAB1 Antibody) at dilution 1/50 (Original magnification: x200)



Immunohistochemistry of paraffin-embedded Human lung cancer tissue using TA351431 (NDUFAB1 Antibody) at dilution 1/50, treated with synthetic peptide. (Original magnification: x200)



Immunohistochemistry of paraffin-embedded Human prostate cancer tissue using TA351431 (NDUFAB1 Antibody) at dilution 1/50 (Original magnification: $\times 200$)



Immunohistochemistry of paraffin-embedded Human prostate cancer tissue using TA351431 (NDUFAB1 Antibody) at dilution 1/50, treated with synthetic peptide. (Original magnification: $\times 200$)