

Product datasheet for **TA351429S**

NDUFA4 Rabbit Polyclonal Antibody

Product data:

Product Type:	Primary Antibodies
Applications:	IHC, WB
Recommended Dilution:	WB: 500-2000 WB positive control: SKOV3 cells and human fetal liver tissue, human fetal brain tissue and HeLa cells IHC: 50-200 Positive control: Human colon cancer Predicted cell location: Cytoplasm
Reactivity:	Human, Mouse
Host:	Rabbit
Isotype:	IgG
Clonality:	Polyclonal
Immunogen:	Synthetic peptide of human NDUFA4
Formulation:	pH7.4 PBS, 0.05% NaN ₃ , 40% Glycerol
Purification:	Antigen affinity purification
Conjugation:	Unconjugated
Storage:	Store at -20°C as received.
Stability:	Stable for 12 months from date of receipt.
Predicted Protein Size:	9 kDa
Gene Name:	NDUFA4, mitochondrial complex associated
Database Link:	NP_002480 Entrez Gene 17992 Mouse Entrez Gene 4697 Human O00483

Background: The protein encoded by this gene belongs to the complex I 9kDa subunit family. Mammalian complex I of mitochondrial respiratory chain is composed of 45 different subunits. This protein has NADH dehydrogenase activity and oxidoreductase activity. It transfers electrons from NADH to the respiratory chain. The immediate electron acceptor for the enzyme is believed to be ubiquinone.



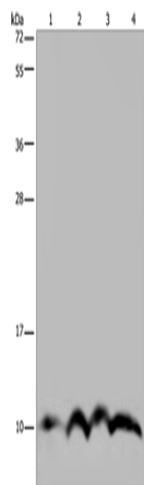
[View online »](#)

Synonyms: CI-9k; CI-MLRQ; MLRQ

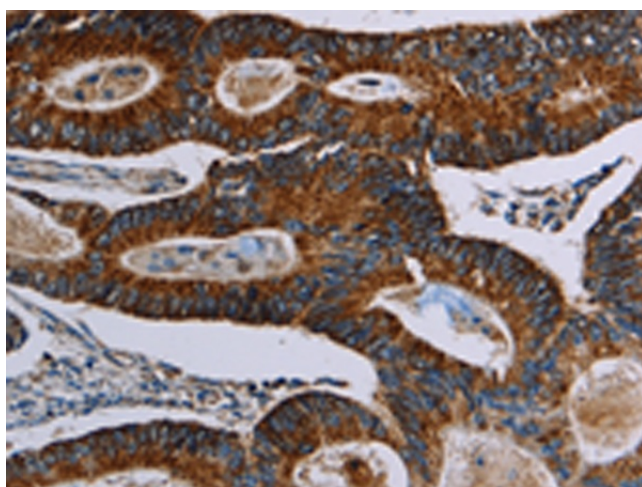
Protein Families: Transmembrane

Protein Pathways: Alzheimer's disease, Huntington's disease, Metabolic pathways, Oxidative phosphorylation, Parkinson's disease

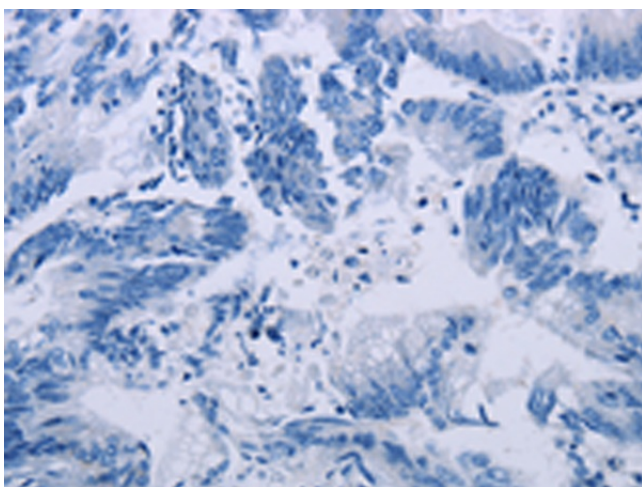
Product images:



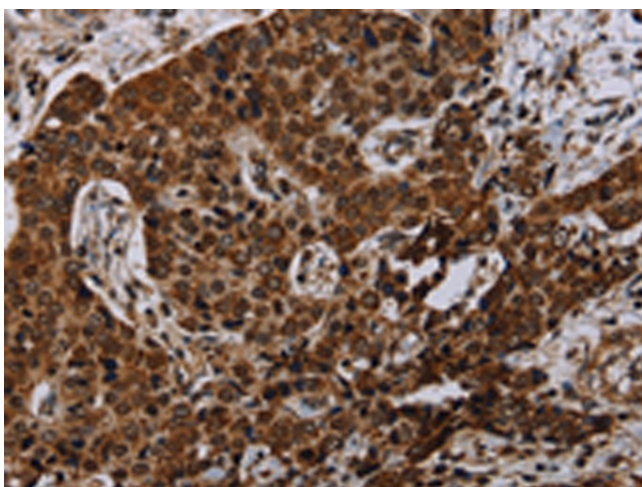
Gel: 10%SDS-PAGE
 Lysate: 40 µg
 Lane 1-4: SKOV3 cells
 human fetal liver tissue
 human fetal brain tissue
 HeLa cells
 Primary antibody: [TA351429] (NDUFA4 Antibody) at dilution 1/300
 Secondary antibody: Goat anti rabbit IgG at 1/8000 dilution
 Exposure time: 20 seconds



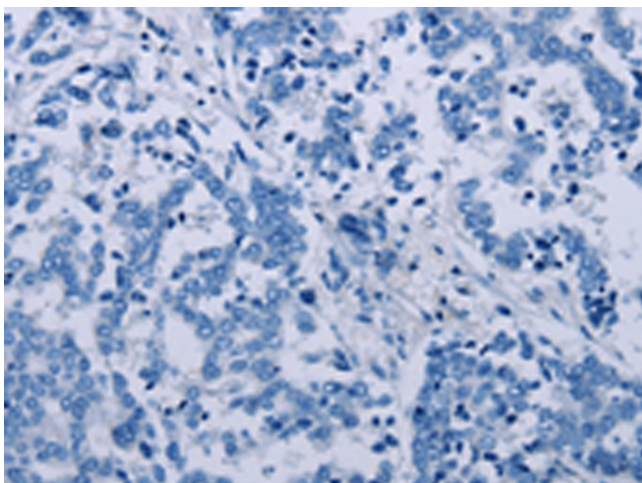
Immunohistochemistry of paraffin-embedded Human colon cancer tissue using [TA351429] (NDUFA4 Antibody) at dilution 1/40 (Original magnification: x200)



Immunohistochemistry of paraffin-embedded Human colon cancer tissue using [TA351429] (NDUFA4 Antibody) at dilution 1/40, treated with synthetic peptide. (Original magnification: $\times 200$)



Immunohistochemistry of paraffin-embedded Human liver cancer tissue using [TA351429] (NDUFA4 Antibody) at dilution 1/40 (Original magnification: $\times 200$)



Immunohistochemistry of paraffin-embedded Human liver cancer tissue using [TA351429] (NDUFA4 Antibody) at dilution 1/40, treated with synthetic peptide. (Original magnification: $\times 200$)