

Product datasheet for **TA351427S**

NAP1 (NAA25) Rabbit Polyclonal Antibody

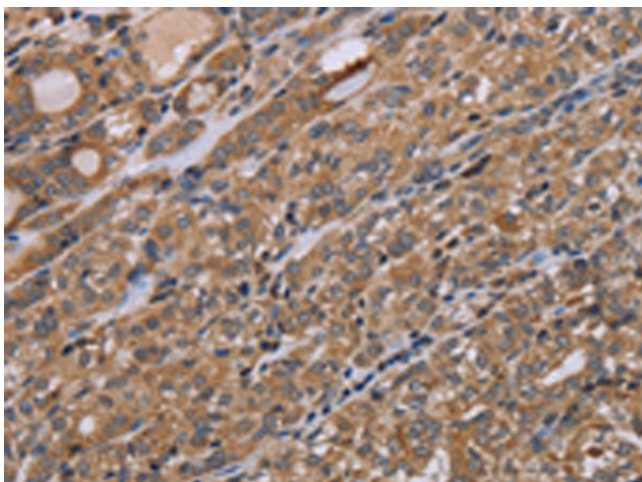
Product data:

Product Type:	Primary Antibodies
Applications:	IHC
Recommended Dilution:	IHC: 50-200 Positive control: Human thyroid cancer Predicted cell location: Cytoplasm
Reactivity:	Human
Host:	Rabbit
Isotype:	IgG
Clonality:	Polyclonal
Immunogen:	Synthetic peptide of human NAA25
Formulation:	pH7.4 PBS, 0.05% NaN ₃ , 40% Glycerol
Purification:	Antigen affinity purification
Conjugation:	Unconjugated
Storage:	Store at -20°C as received.
Stability:	Stable for 12 months from date of receipt.
Gene Name:	N(alpha)-acetyltransferase 25, NatB auxiliary subunit
Database Link:	NP_079229 Entrez Gene 80018 Human Q14CX7
Background:	This gene encodes the auxiliary subunit of the heteromeric N-terminal acetyltransferase B complex. This complex acetylates methionine residues that are followed by acidic or asparagine residues.
Synonyms:	C12orf30; MDM20; NAP1

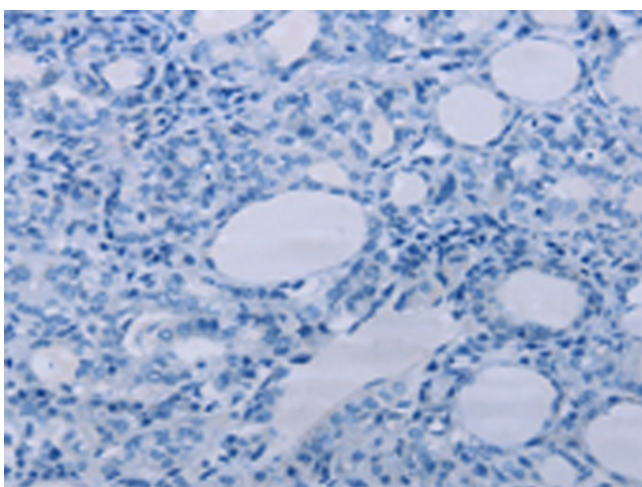


[View online »](#)

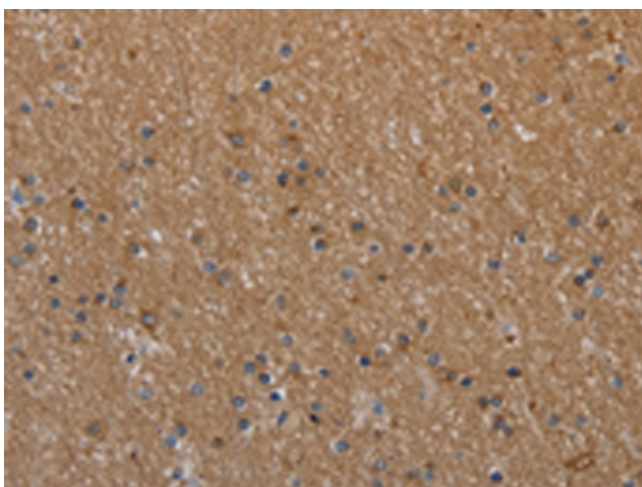
Product images:



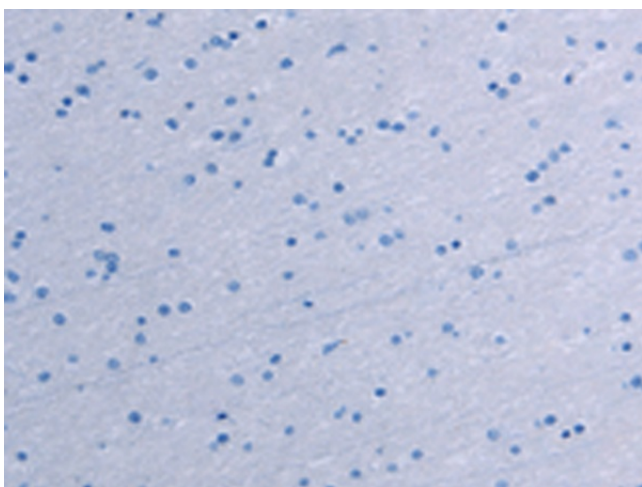
Immunohistochemistry of paraffin-embedded Human thyroid cancer tissue using [TA351427] (NAA25 Antibody) at dilution 1/40 (Original magnification: ×200)



Immunohistochemistry of paraffin-embedded Human thyroid cancer tissue using [TA351427] (NAA25 Antibody) at dilution 1/40, treated with synthetic peptide. (Original magnification: ×200)



Immunohistochemistry of paraffin-embedded Human brain tissue using [TA351427] (NAA25 Antibody) at dilution 1/40 (Original magnification: ×200)



Immunohistochemistry of paraffin-embedded Human brain tissue using [TA351427] (NAA25 Antibody) at dilution 1/40, treated with synthetic peptide. (Original magnification: ×200)