

## Product datasheet for **TA351420**

### MYBBP1A Rabbit Polyclonal Antibody

#### Product data:

Product Type:	Primary Antibodies
Applications:	IHC, WB
Recommended Dilution:	WB: 200-1000 WB positive control: HT-29, A549, 293T and Hela cells IHC: 50-200 Positive control: Human thyroid cancer Predicted cell location: Nucleus and Cytoplasm
Reactivity:	Human
Host:	Rabbit
Isotype:	IgG
Clonality:	Polyclonal
Immunogen:	Synthetic peptide of human MYBBP1A
Formulation:	pH7.4 PBS, 0.05% NaN <sub>3</sub> , 40% Glycerol
Concentration:	lot specific
Purification:	Antigen affinity purification
Conjugation:	Unconjugated
Storage:	Store at -20°C as received.
Stability:	Stable for 12 months from date of receipt.
Predicted Protein Size:	149 kDa
Gene Name:	MYB binding protein 1a
Database Link:	<a href="#">NP_055335</a> <a href="#">Entrez Gene 10514 Human</a> <a href="#">Q9BQG0</a>

**Background:** This gene encodes a nucleolar transcriptional regulator that was first identified by its ability to bind specifically to the Myb proto-oncogene protein. The encoded protein is thought to play a role in many cellular processes including response to nucleolar stress, tumor suppression and synthesis of ribosomal DNA. Alternate splicing results in multiple transcript variants.

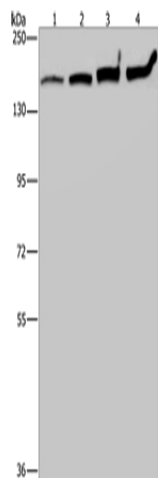


[View online »](#)

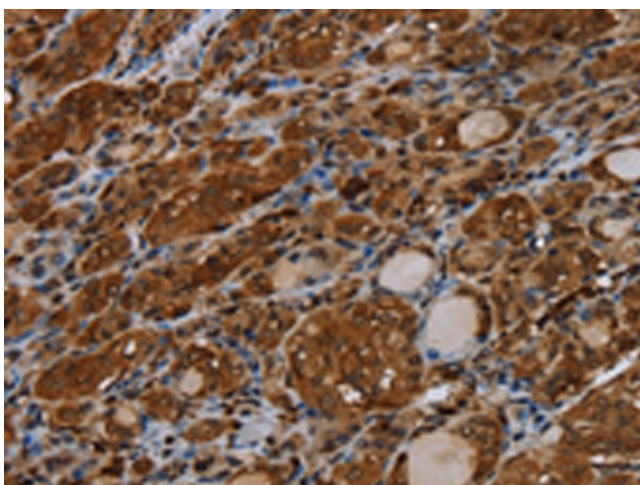
Synonyms: P160; PAP2

Protein Families: Stem cell - Pluripotency, Transcription Factors

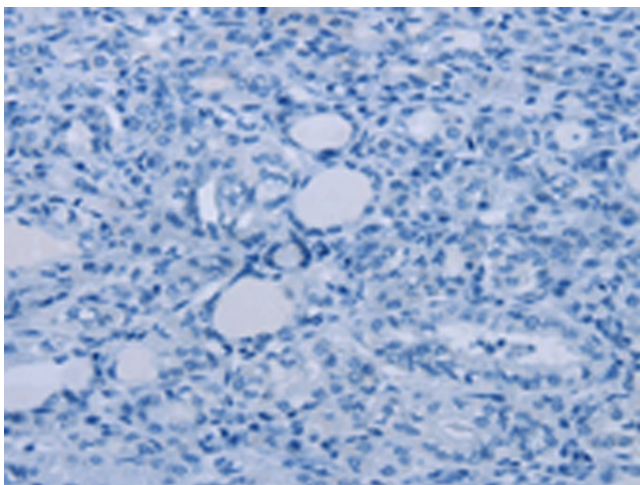
### Product images:



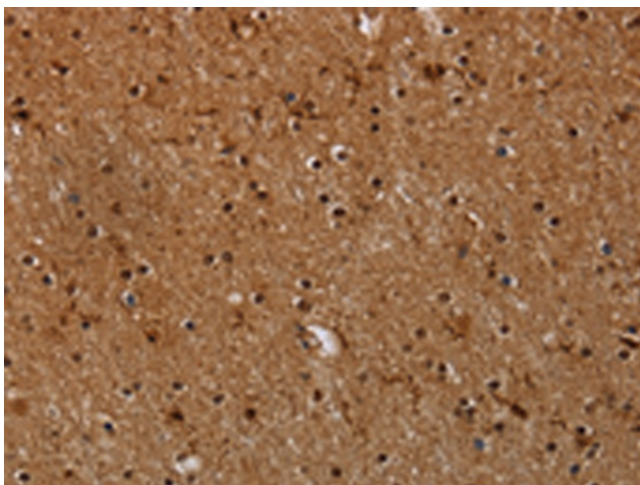
Gel: 6%SDS-PAGE  
Lysate: 40  $\mu$ g  
Lane 1-4: HT29 cells  
A549 cells  
293T cells  
Hela cells  
Primary antibody: TA351420 (MYBBP1A Antibody)  
at dilution 1/200  
Secondary antibody: Goat anti rabbit IgG at  
1/8000 dilution  
Exposure time: 20 seconds



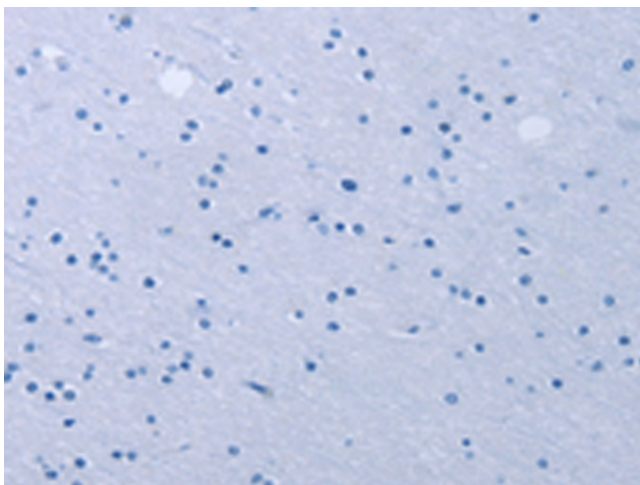
Immunohistochemistry of paraffin-embedded  
Human thyroid cancer tissue using TA351420  
(MYBBP1A Antibody) at dilution 1/40 (Original  
magnification:  $\times 200$ )



Immunohistochemistry of paraffin-embedded Human thyroid cancer tissue using TA351420 (MYBBP1A Antibody) at dilution 1/40, treated with synthetic peptide. (Original magnification: ×200)



Immunohistochemistry of paraffin-embedded Human brain tissue using TA351420 (MYBBP1A Antibody) at dilution 1/40 (Original magnification: ×200)



Immunohistochemistry of paraffin-embedded Human brain tissue using TA351420 (MYBBP1A Antibody) at dilution 1/40, treated with synthetic peptide. (Original magnification: ×200)