

Product datasheet for **TA351418**

MTSS1 Rabbit Polyclonal Antibody

Product data:

Product Type:	Primary Antibodies
Applications:	IHC
Recommended Dilution:	IHC: 25-100 Positive control: Human thyroid cancer Predicted cell location: Cytoplasm
Reactivity:	Human, Mouse
Host:	Rabbit
Isotype:	IgG
Clonality:	Polyclonal
Immunogen:	Synthetic peptide of human MTSS1
Formulation:	pH7.4 PBS, 0.05% NaN ₃ , 40% Glycerol
Concentration:	lot specific
Purification:	Antigen affinity purification
Conjugation:	Unconjugated
Storage:	Store at -20°C as received.
Stability:	Stable for 12 months from date of receipt.
Gene Name:	metastasis suppressor 1
Database Link:	NP_055566 Entrez Gene 211401 Mouse Entrez Gene 9788 Human O43312



[View online »](#)

Background:

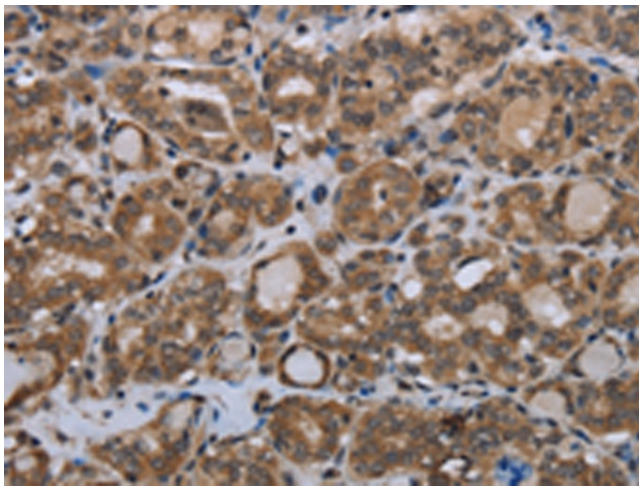
MTSS1 (metastasis suppressor 1), also known as MIM, MIMA or MIMB, is a 755 amino acid protein that contains one Actin-binding WH2 (Wiskott-Aldrich syndrome protein homology-2) domain and one IMD domain. Expressed in a variety of tissues including testis, thymus, prostate, spleen, colon, uterus and blood, MTSS1 is thought to bind to Actin and, via this binding, may affect the dynamics of the cytoskeleton. Through its association with the cytoskeleton, MTSS1 plays a role in controlling the progression and metastasis of carcinomas in various organ sites throughout the body and, when expressed at normal levels, functions as a tumor suppressor. Overexpression of MTSS1 results in the formation of abnormal actin structures, an event that may lead to tumorigenesis. Three isoforms of MTSS1 exist due to alternative splicing events.

Synonyms:

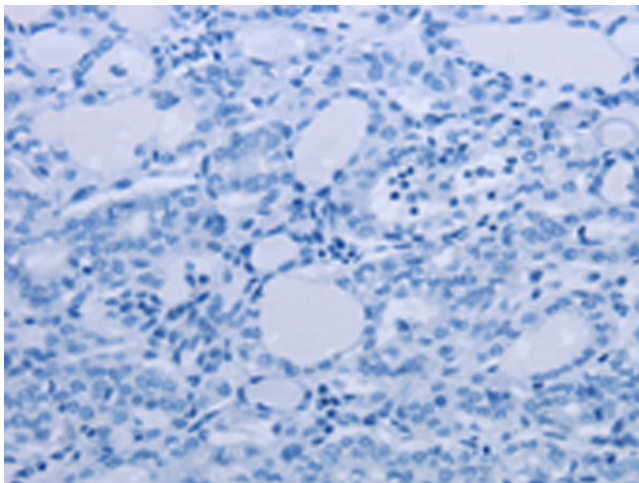
MIM; MIMA; MIMB

Protein Families:

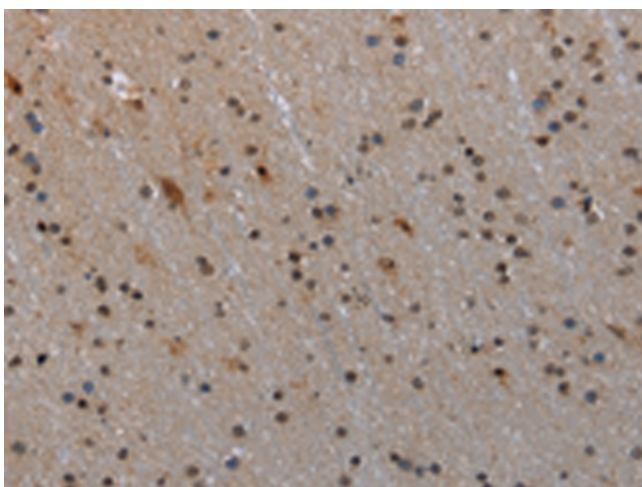
Druggable Genome

Product images:

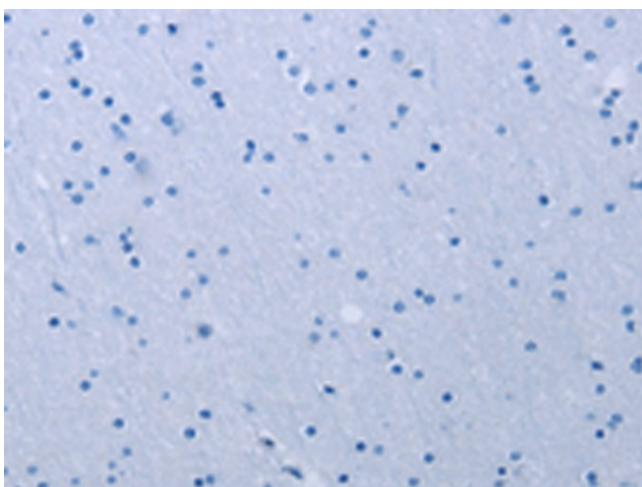
Immunohistochemistry of paraffin-embedded Human thyroid cancer tissue using TA351418 (MTSS1 Antibody) at dilution 1/20 (Original magnification: $\times 200$)



Immunohistochemistry of paraffin-embedded Human thyroid cancer tissue using TA351418 (MTSS1 Antibody) at dilution 1/20, treated with synthetic peptide. (Original magnification: $\times 200$)



Immunohistochemistry of paraffin-embedded Human brain tissue using TA351418 (MTSS1 Antibody) at dilution 1/20 (Original magnification: ×200)



Immunohistochemistry of paraffin-embedded Human brain tissue using TA351418 (MTSS1 Antibody) at dilution 1/20, treated with synthetic peptide. (Original magnification: ×200)