

Product datasheet for **TA351414**

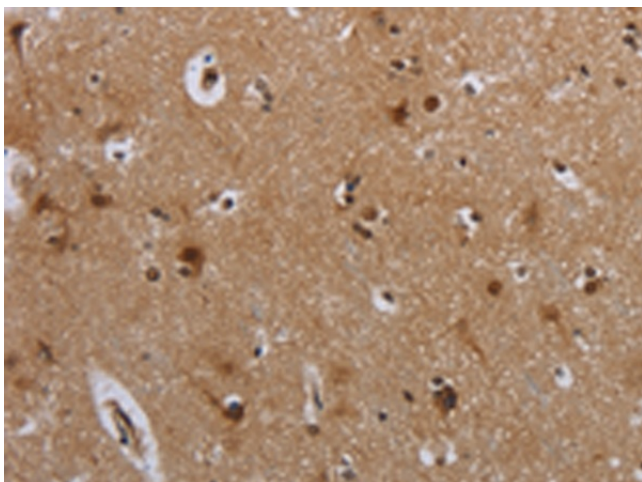
MTBP Rabbit Polyclonal Antibody

Product data:

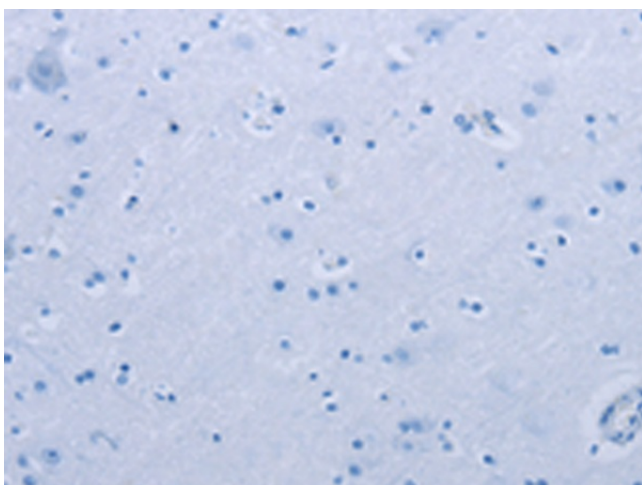
Product Type:	Primary Antibodies
Applications:	IHC
Recommended Dilution:	IHC: 50-200 Positive control: Human brain Predicted cell location: Cytoplasm and Nucleus
Reactivity:	Human, Mouse
Host:	Rabbit
Isotype:	IgG
Clonality:	Polyclonal
Immunogen:	Synthetic peptide of human MTBP
Formulation:	pH7.4 PBS, 0.05% NaN ₃ , 40% Glycerol
Concentration:	lot specific
Purification:	Antigen affinity purification
Conjugation:	Unconjugated
Storage:	Store at -20°C as received.
Stability:	Stable for 12 months from date of receipt.
Gene Name:	MDM2 binding protein
Database Link:	NP_071328 Entrez Gene 105837 Mouse Entrez Gene 27085 Human Q96DY7
Background:	This gene encodes a protein that interacts with the oncoprotein mouse double minute 2. The encoded protein regulates progression through the cell cycle and may be involved in tumor formation.
Synonyms:	MDM2BP



[View online »](#)

Product images:

Immunohistochemistry of paraffin-embedded Human brain tissue using TA351414 (MTBP Antibody) at dilution 1/40 (Original magnification: ×200)



Immunohistochemistry of paraffin-embedded Human brain tissue using TA351414 (MTBP Antibody) at dilution 1/40, treated with synthetic peptide. (Original magnification: ×200)