

Product datasheet for **TA351411S**

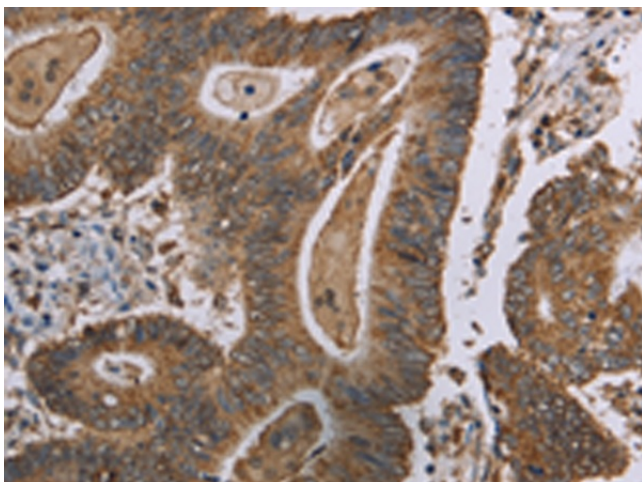
MRGX1 (MRGPRX1) Rabbit Polyclonal Antibody

Product data:

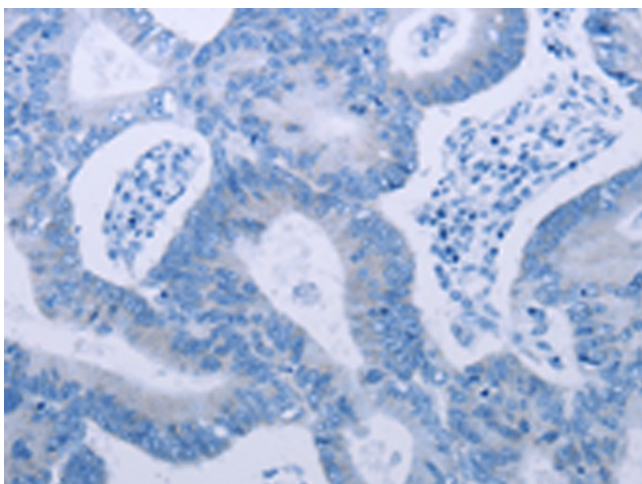
Product Type:	Primary Antibodies
Applications:	IHC
Recommended Dilution:	IHC: 50-200 Positive control: Human colon cancer Predicted cell location: Cytoplasm
Reactivity:	Human
Host:	Rabbit
Isotype:	IgG
Clonality:	Polyclonal
Immunogen:	Synthetic peptide of human MRGPRX1
Formulation:	pH7.4 PBS, 0.05% NaN ₃ , 40% Glycerol
Purification:	Antigen affinity purification
Conjugation:	Unconjugated
Storage:	Store at -20°C as received.
Stability:	Stable for 12 months from date of receipt.
Gene Name:	MAS related GPR family member X1
Database Link:	NP_671732 Entrez Gene 259249 Human Q96LB2
Background:	MRGX1 is an opioid receptor that has been reported exclusively in dorsal root ganglion. MRGX1 is probably involved in the function of nociceptive neurons and may regulate nociceptor function and/or development, including the sensation or modulation of pain. It is potently activated by enkephalins including BAM22 (bovine adrenal medulla peptide 22) and BAM (8-22). BAM22 is the most potent compound and evoked a large and dose-dependent release of intracellular calcium in stably transfected cells.
Synonyms:	GPCR; MGRG2; MRGX1; SNSR4
Protein Families:	Druggable Genome, GPCR, Transmembrane



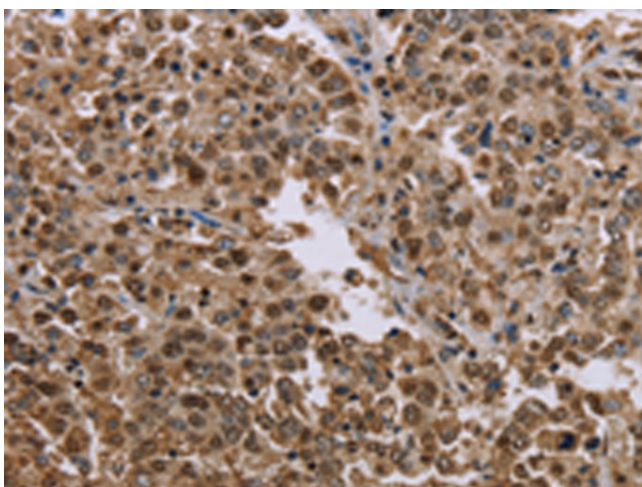
[View online »](#)

Product images:

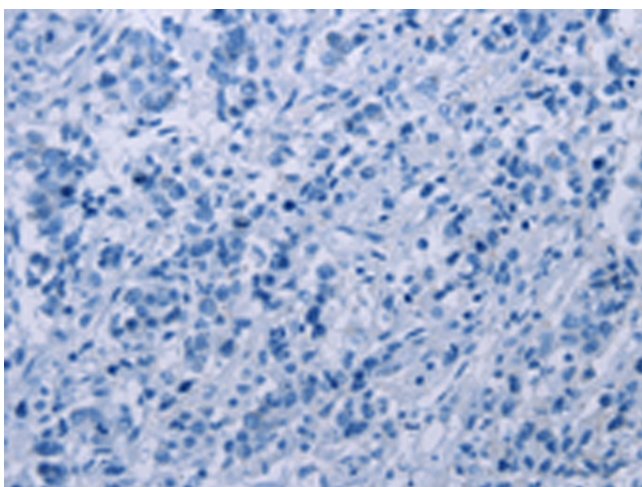
Immunohistochemistry of paraffin-embedded Human colon cancer tissue using [TA351411] (MRGPRX1 Antibody) at dilution 1/40 (Original magnification: $\times 200$)



Immunohistochemistry of paraffin-embedded Human colon cancer tissue using [TA351411] (MRGPRX1 Antibody) at dilution 1/40, treated with synthetic peptide. (Original magnification: $\times 200$)



Immunohistochemistry of paraffin-embedded Human liver cancer tissue using [TA351411] (MRGPRX1 Antibody) at dilution 1/40 (Original magnification: $\times 200$)



Immunohistochemistry of paraffin-embedded Human liver cancer tissue using [TA351411] (MRGPRX1 Antibody) at dilution 1/40, treated with synthetic peptide. (Original magnification: $\times 200$)