

## Product datasheet for **TA351411**

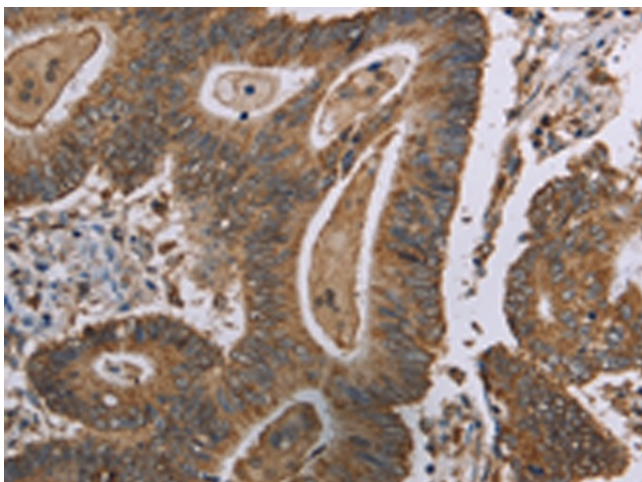
### **MRGX1 (MRGPRX1) Rabbit Polyclonal Antibody**

#### **Product data:**

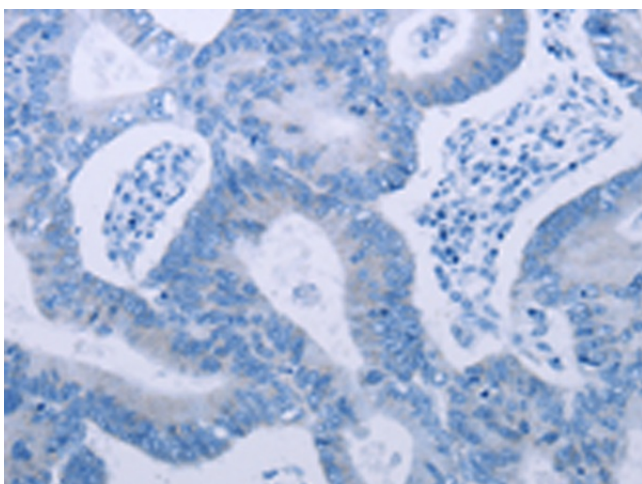
<b>Product Type:</b>	Primary Antibodies
<b>Applications:</b>	IHC
<b>Recommended Dilution:</b>	IHC: 50-200 Positive control: Human colon cancer Predicted cell location: Cytoplasm
<b>Reactivity:</b>	Human
<b>Host:</b>	Rabbit
<b>Isotype:</b>	IgG
<b>Clonality:</b>	Polyclonal
<b>Immunogen:</b>	Synthetic peptide of human MRGPRX1
<b>Formulation:</b>	pH7.4 PBS, 0.05% NaN <sub>3</sub> , 40% Glycerol
<b>Concentration:</b>	lot specific
<b>Purification:</b>	Antigen affinity purification
<b>Conjugation:</b>	Unconjugated
<b>Storage:</b>	Store at -20°C as received.
<b>Stability:</b>	Stable for 12 months from date of receipt.
<b>Gene Name:</b>	MAS related GPR family member X1
<b>Database Link:</b>	<a href="#">NP_671732</a> <a href="#">Entrez Gene 259249 Human</a> <a href="#">Q96LB2</a>
<b>Background:</b>	MRGX1 is an opiod receptor that has been reported exclusively in dorsal root ganglion. MRGX1 is probably involved in the function of nociceptive neurons and may regulate nociceptor function and/or development, including the sensation or modulation of pain. It is potently activated by enkephalins including BAM22 (bovine adrenal medulla peptide 22) and BAM (8-22). BAM22 is the most potent compound and evoked a large and dose-dependent release of intracellular calcium in stably transfected cells.
<b>Synonyms:</b>	GPCR; MGRG2; MRGX1; SNSR4
<b>Protein Families:</b>	Druggable Genome, GPCR, Transmembrane



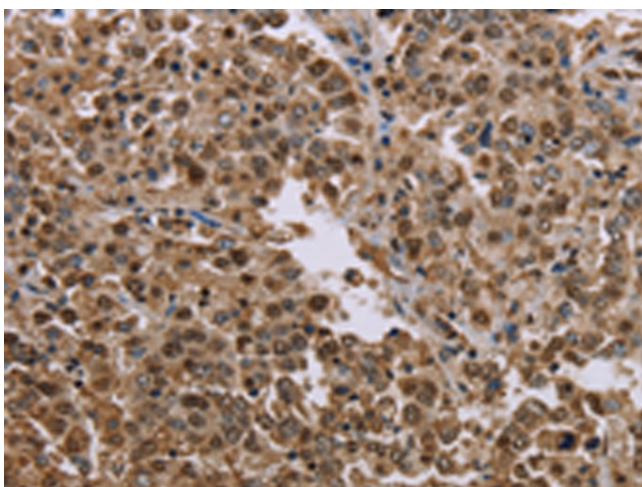
[View online »](#)

**Product images:**

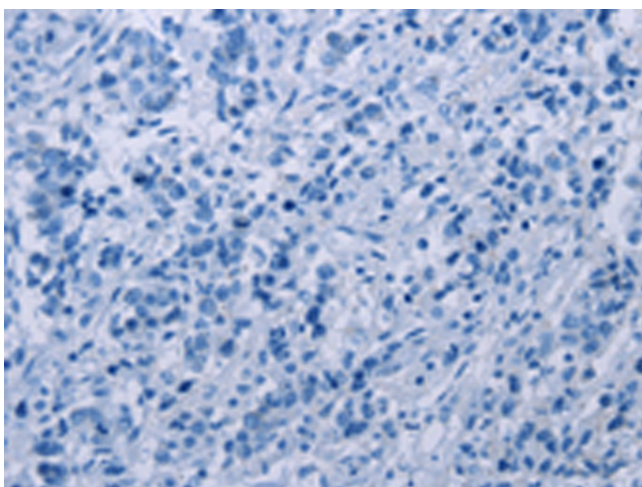
Immunohistochemistry of paraffin-embedded Human colon cancer tissue using TA351411 (MRGPRX1 Antibody) at dilution 1/40 (Original magnification:  $\times 200$ )



Immunohistochemistry of paraffin-embedded Human colon cancer tissue using TA351411 (MRGPRX1 Antibody) at dilution 1/40, treated with synthetic peptide. (Original magnification:  $\times 200$ )



Immunohistochemistry of paraffin-embedded Human liver cancer tissue using TA351411 (MRGPRX1 Antibody) at dilution 1/40 (Original magnification: ×200)



Immunohistochemistry of paraffin-embedded Human liver cancer tissue using TA351411 (MRGPRX1 Antibody) at dilution 1/40, treated with synthetic peptide. (Original magnification: ×200)