

Product datasheet for **TA351410S**

MRE11 Rabbit Polyclonal Antibody

Product data:

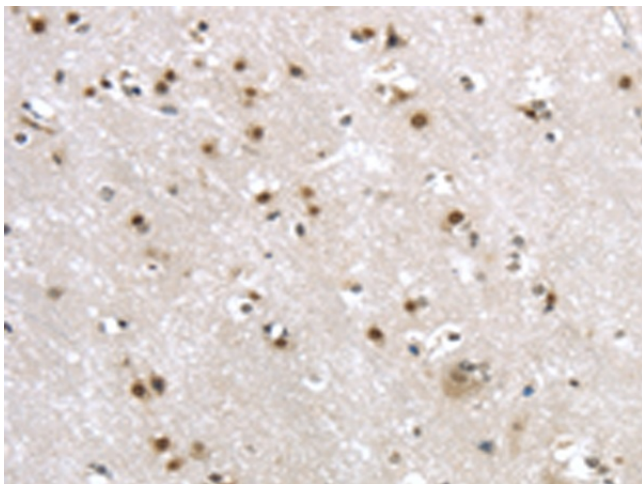
Product Type:	Primary Antibodies
Applications:	IHC
Recommended Dilution:	IHC: 20-100 Positive control: Human brain Predicted cell location: Nucleus
Reactivity:	Human
Host:	Rabbit
Isotype:	IgG
Clonality:	Polyclonal
Immunogen:	Synthetic peptide of human MRE11A
Formulation:	pH7.4 PBS, 0.05% NaN ₃ , 40% Glycerol
Purification:	Antigen affinity purification
Conjugation:	Unconjugated
Storage:	Store at -20°C as received.
Stability:	Stable for 12 months from date of receipt.
Gene Name:	MRE11 homolog A, double strand break repair nuclease
Database Link:	NP_005581 Entrez Gene 4361 Human P49959

Background: This gene encodes a nuclear protein involved in homologous recombination, telomere length maintenance, and DNA double-strand break repair. By itself, the protein has 3' to 5' exonuclease activity and endonuclease activity. The protein forms a complex with the RAD50 homolog; this complex is required for nonhomologous joining of DNA ends and possesses increased single-stranded DNA endonuclease and 3' to 5' exonuclease activities. In conjunction with a DNA ligase, this protein promotes the joining of noncomplementary ends in vitro using short homologies near the ends of the DNA fragments. This gene has a pseudogene on chromosome 3. Alternative splicing of this gene results in two transcript variants encoding different isoforms.

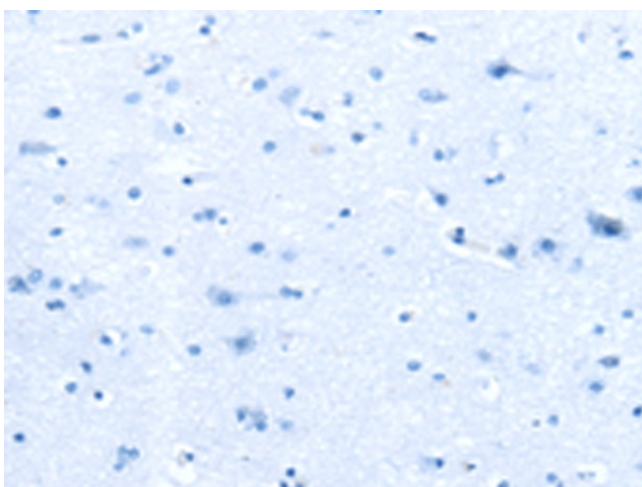


[View online »](#)

Synonyms: ATLD; HNGS1; MRE11; MRE11B
Protein Families: Druggable Genome, Stem cell - Pluripotency
Protein Pathways: Homologous recombination, Non-homologous end-joining

Product images:

Immunohistochemistry of paraffin-embedded Human brain tissue using [TA351410] (MRE11 Antibody) at dilution 1/20 (Original magnification: ×200)



Immunohistochemistry of paraffin-embedded Human brain tissue using [TA351410] (MRE11 Antibody) at dilution 1/20, treated with synthetic peptide. (Original magnification: ×200)