

## Product datasheet for **TA351410**

### MRE11 Rabbit Polyclonal Antibody

#### Product data:

Product Type:	Primary Antibodies
Applications:	IHC
Recommended Dilution:	IHC: 20-100 Positive control: Human brain Predicted cell location: Nucleus
Reactivity:	Human
Host:	Rabbit
Isotype:	IgG
Clonality:	Polyclonal
Immunogen:	Synthetic peptide of human MRE11A
Formulation:	pH7.4 PBS, 0.05% NaN <sub>3</sub> , 40% Glycerol
Concentration:	lot specific
Purification:	Antigen affinity purification
Conjugation:	Unconjugated
Storage:	Store at -20°C as received.
Stability:	Stable for 12 months from date of receipt.
Gene Name:	MRE11 homolog A, double strand break repair nuclease
Database Link:	<a href="#">NP_005581</a> <a href="#">Entrez Gene 4361 Human</a> <a href="#">P49959</a>



[View online »](#)

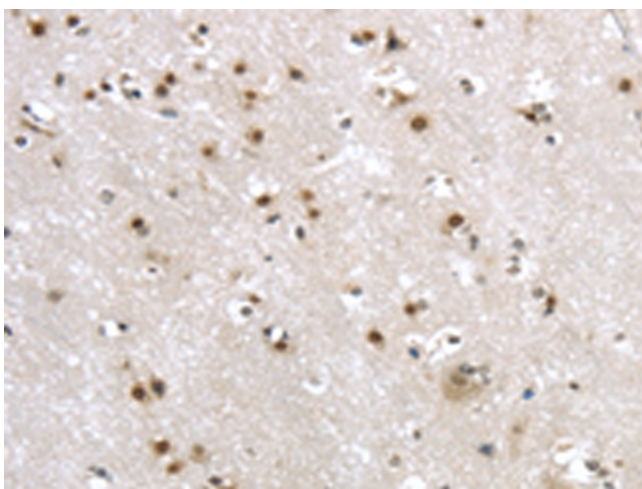
**Background:** This gene encodes a nuclear protein involved in homologous recombination, telomere length maintenance, and DNA double-strand break repair. By itself, the protein has 3' to 5' exonuclease activity and endonuclease activity. The protein forms a complex with the RAD50 homolog; this complex is required for nonhomologous joining of DNA ends and possesses increased single-stranded DNA endonuclease and 3' to 5' exonuclease activities. In conjunction with a DNA ligase, this protein promotes the joining of noncomplementary ends in vitro using short homologies near the ends of the DNA fragments. This gene has a pseudogene on chromosome 3. Alternative splicing of this gene results in two transcript variants encoding different isoforms.

**Synonyms:** ATLD; HNGS1; MRE11; MRE11B

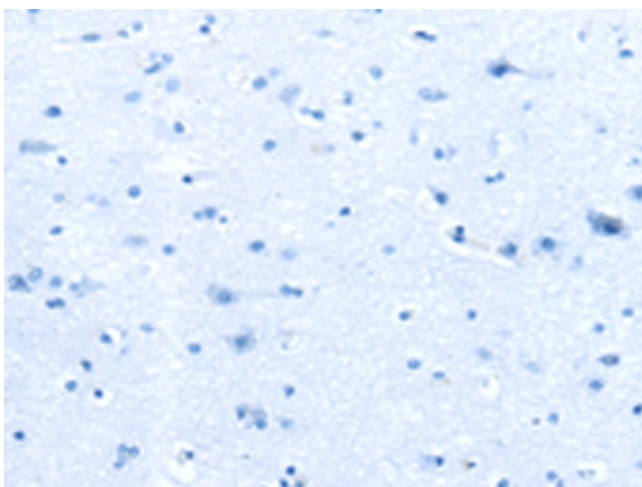
**Protein Families:** Druggable Genome, Stem cell - Pluripotency

**Protein Pathways:** Homologous recombination, Non-homologous end-joining

**Product images:**



Immunohistochemistry of paraffin-embedded Human brain tissue using TA351410 (MRE11 Antibody) at dilution 1/20 (Original magnification: ×200)



Immunohistochemistry of paraffin-embedded Human brain tissue using TA351410 (MRE11 Antibody) at dilution 1/20, treated with synthetic peptide. (Original magnification: ×200)