

Product datasheet for **TA351408S**

MOBK1B (MOB1A) Rabbit Polyclonal Antibody

Product data:

Product Type:	Primary Antibodies
Applications:	IHC, WB
Recommended Dilution:	WB: 500-2000 WB positive control: Hela and Jurkat cells, mouse liver tissue, K562 and A375 cells IHC: 50-200 Positive control: Human liver cancer Predicted cell location: Cytoplasm and Nucleus
Reactivity:	Human, Mouse, Rat
Host:	Rabbit
Isotype:	IgG
Clonality:	Polyclonal
Immunogen:	Synthetic peptide of human MOB1A
Formulation:	pH7.4 PBS, 0.05% NaN ₃ , 40% Glycerol
Purification:	Antigen affinity purification
Conjugation:	Unconjugated
Storage:	Store at -20°C as received.
Stability:	Stable for 12 months from date of receipt.
Predicted Protein Size:	25 kDa
Gene Name:	MOB kinase activator 1A
Database Link:	NP_060691 Entrez Gene 232157 MouseEntrez Gene 297387 RatEntrez Gene 55233 Human Q9H8S9



[View online »](#)

Background:

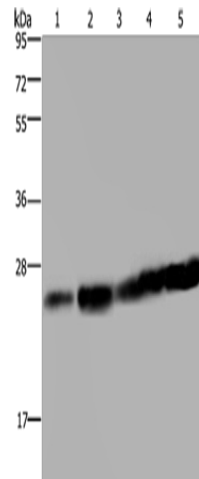
MOB1 was first identified in yeast as a protein that binds to Mps with essential roles in the completion of mitosis and the maintenance of ploidy. Its Drosophila and mammalian homologs, Mats and MOB1, respectively, are involved in the Hippo signaling tumor suppressor pathway, which plays a critical role in organ size regulation and which has been implicated in cancer development. There are two MOB1 proteins in humans, MOB1 α and MOB1 β , that are encoded by two different genes but which have greater than 95% amino acid sequence identity.

Synonyms:

C2orf6; MATS1; MOB1; Mob4B; MOBK1B; MOBKL1B

Protein Families:

Druggable Genome

Product images:


Gel: 10%SDS-PAGE

Lysate: 40 μ g

Lane 1-5: HeLa cells

Jurkat cells

mouse liver tissue

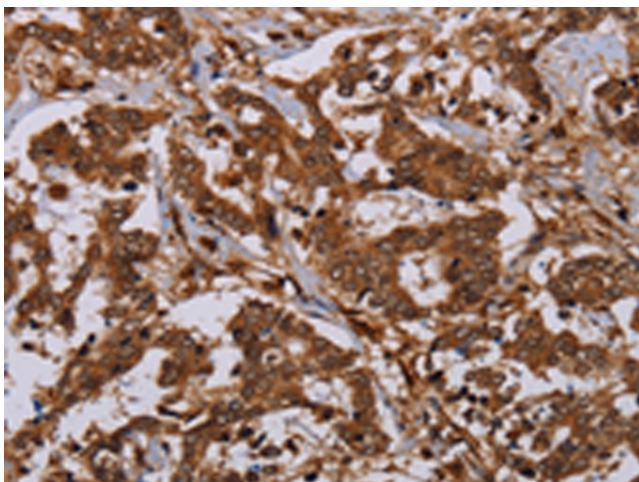
K562 cells

A375 cells

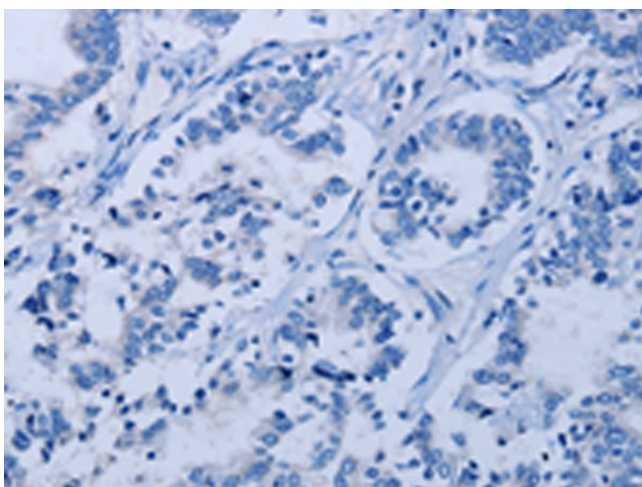
Primary antibody: [TA351408] (MOB1A Antibody) at dilution 1/200

Secondary antibody: Goat anti rabbit IgG at 1/8000 dilution

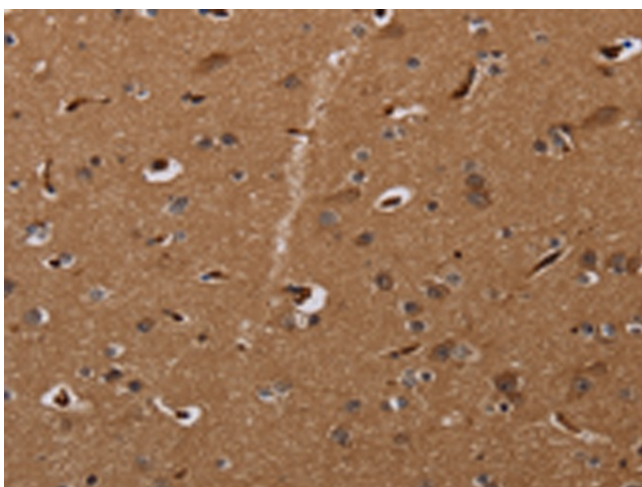
Exposure time: 10 seconds



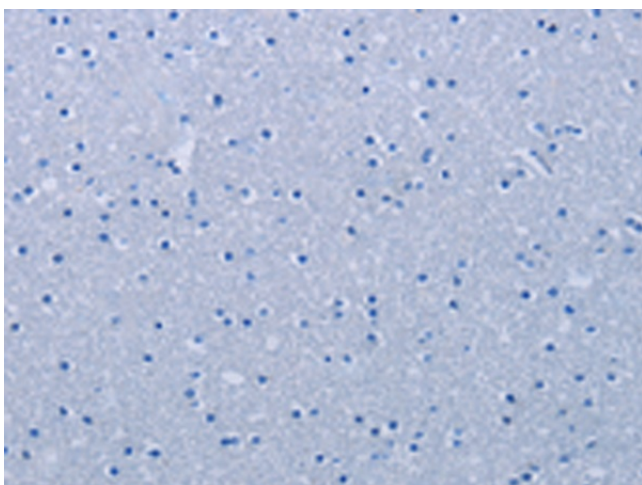
Immunohistochemistry of paraffin-embedded Human liver cancer tissue using [TA351408] (MOB1A Antibody) at dilution 1/30 (Original magnification: \times 200)



Immunohistochemistry of paraffin-embedded Human liver cancer tissue using [TA351408] (MOB1A Antibody) at dilution 1/30, treated with synthetic peptide. (Original magnification: ×200)



Immunohistochemistry of paraffin-embedded Human brain tissue using [TA351408] (MOB1A Antibody) at dilution 1/30 (Original magnification: ×200)



Immunohistochemistry of paraffin-embedded Human brain tissue using [TA351408] (MOB1A Antibody) at dilution 1/30, treated with synthetic peptide. (Original magnification: ×200)