

Product datasheet for **TA351406**

MMP23 (MMP23B) Rabbit Polyclonal Antibody

Product data:

Product Type:	Primary Antibodies
Applications:	IHC, WB
Recommended Dilution:	WB: 500-2000 WB positive control: PC3, hela and A549 cells IHC: 25-100 Positive control: Human liver cancer Predicted cell location: Cytoplasm
Reactivity:	Human
Host:	Rabbit
Isotype:	IgG
Clonality:	Polyclonal
Immunogen:	Synthetic peptide of human MMP23B
Formulation:	pH7.4 PBS, 0.05% NaN ₃ , 40% Glycerol
Concentration:	lot specific
Purification:	Antigen affinity purification
Conjugation:	Unconjugated
Storage:	Store at -20°C as received.
Stability:	Stable for 12 months from date of receipt.
Predicted Protein Size:	44 kDa
Gene Name:	matrix metalloproteinase 23B
Database Link:	NP_008914 Entrez Gene 8510 Human O75900



[View online »](#)

Background:

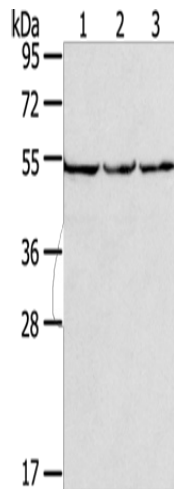
This gene (MMP23B) encodes a member of the matrix metalloproteinase (MMP) family, and it is part of a duplicated region of chromosome 1p36.3. Proteins of the matrix metalloproteinase (MMP) family are involved in the breakdown of extracellular matrix in normal physiological processes, such as embryonic development, reproduction, and tissue remodeling, as well as in disease processes, such as arthritis and metastasis. This gene belongs to the more telomeric copy of the duplicated region.

Synonyms:

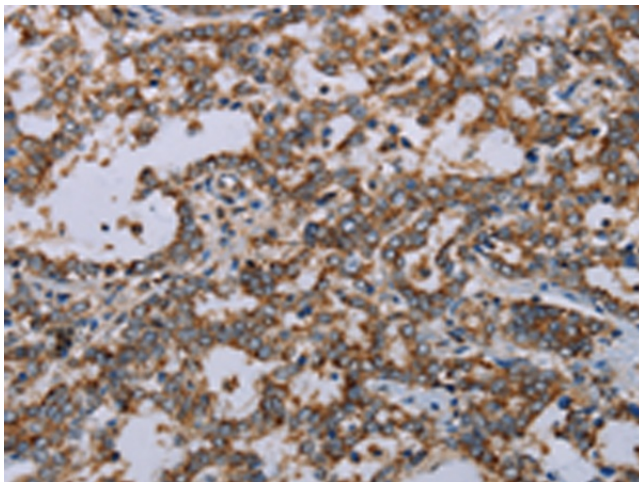
MIFR; MIFR-1; MMP22; MMP23A

Protein Families:

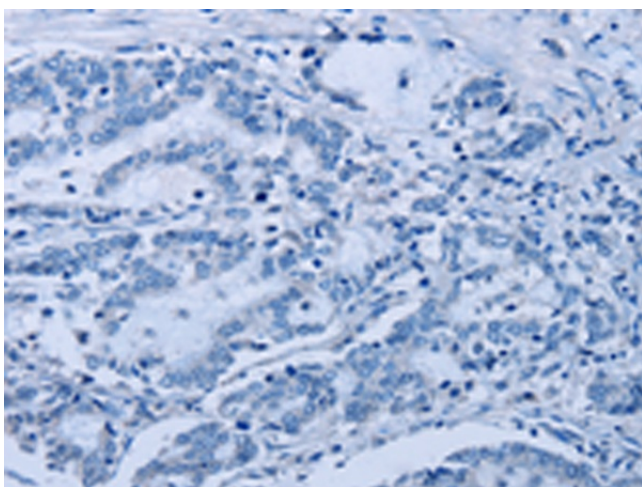
Druggable Genome, Protease, Secreted Protein, Transmembrane

Product images:


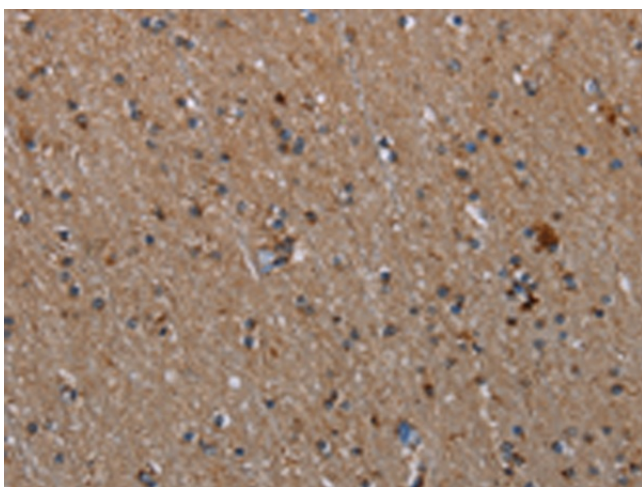
Gel: 8%SDS-PAGE
 Lysate: 40 μ g
 Lane 1-3: PC3 cells
 hela cells
 A549 cells
 Primary antibody: TA351406 (MMP23B Antibody)
 at dilution 1/200
 Secondary antibody: Goat anti rabbit IgG at
 1/8000 dilution
 Exposure time: 10 seconds



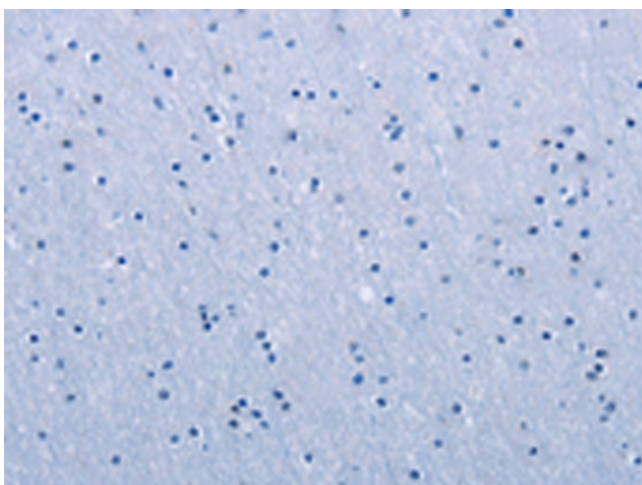
Immunohistochemistry of paraffin-embedded
 Human liver cancer tissue using TA351406
 (MMP23B Antibody) at dilution 1/20 (Original
 magnification: \times 200)



Immunohistochemistry of paraffin-embedded Human liver cancer tissue using TA351406 (MMP23B Antibody) at dilution 1/20, treated with synthetic peptide. (Original magnification: ×200)



Immunohistochemistry of paraffin-embedded Human brain tissue using TA351406 (MMP23B Antibody) at dilution 1/20 (Original magnification: ×200)



Immunohistochemistry of paraffin-embedded Human brain tissue using TA351406 (MMP23B Antibody) at dilution 1/20, treated with synthetic peptide. (Original magnification: ×200)