

Product datasheet for **TA351404S**

MLK3 (MAP3K11) Rabbit Polyclonal Antibody

Product data:

Product Type:	Primary Antibodies
Applications:	IHC, WB
Recommended Dilution:	WB: 500-2000 WB positive control: MCF7, PC3, LO2, NIH/3T3 cell lysates IHC: 50-200 Positive control: Human colorectal cancer Predicted cell location: Cytoplasm
Reactivity:	Human, Mouse, Rat
Host:	Rabbit
Isotype:	IgG
Clonality:	Polyclonal
Immunogen:	Synthetic peptide of human MAP3K11
Formulation:	pH7.4 PBS, 0.05% NaN ₃ , 40% Glycerol
Purification:	Antigen affinity purification
Conjugation:	Unconjugated
Storage:	Store at -20°C as received.
Stability:	Stable for 12 months from date of receipt.
Predicted Protein Size:	93 kDa
Gene Name:	mitogen-activated protein kinase kinase kinase 11
Database Link:	NP_002410 Entrez Gene 26403 Mouse Entrez Gene 309168 Rat Entrez Gene 4296 Human Q16584

Background: The protein encoded by this gene is a member of the serine/threonine kinase family. This kinase contains a SH3 domain and a leucine zipper-basic motif. This kinase preferentially activates MAPK8/JNK kinase, and functions as a positive regulator of JNK signaling pathway. This kinase can directly phosphorylate, and activates I κ B kinase alpha and beta, and is found to be involved in the transcription activity of NF-kappaB mediated by Rho family GTPases and CDC42.



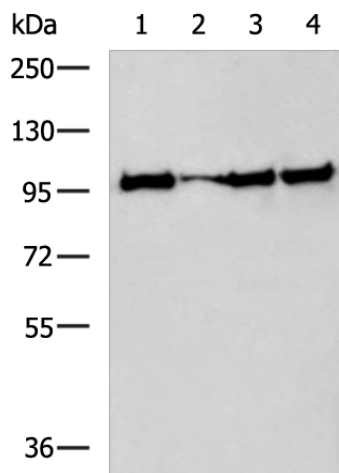
[View online »](#)

Synonyms: MEKK11; MLK-3; MLK3; PTK1; SPRK

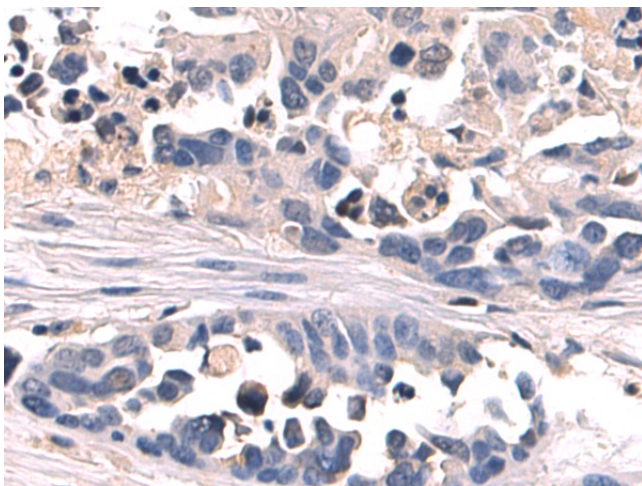
Protein Families: Druggable Genome, Protein Kinase

Protein Pathways: MAPK signaling pathway

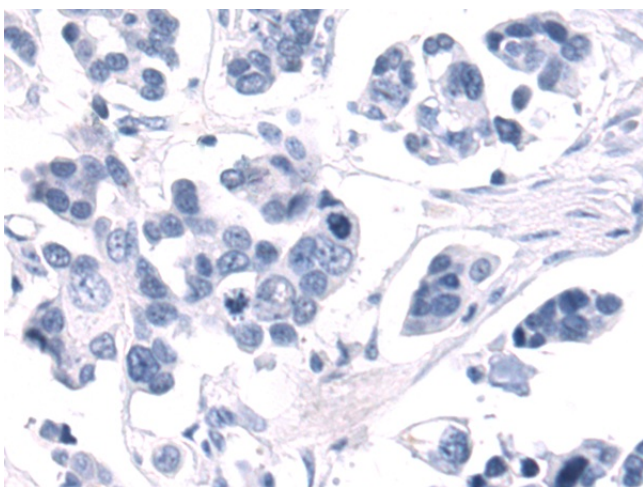
Product images:



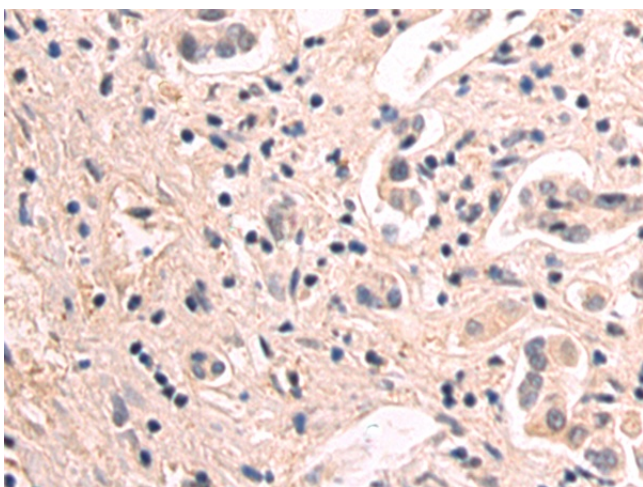
Gel: 6%SDS-PAGE
 Lysate: 40 µg
 Lane 1-2: LO2 and PC-3 cell lysates
 Primary antibody: [TA351404] (MAP3K11 Antibody) at dilution 1/400
 Secondary antibody: Goat anti rabbit IgG at 1/5000 dilution
 Exposure time: 5 minutes



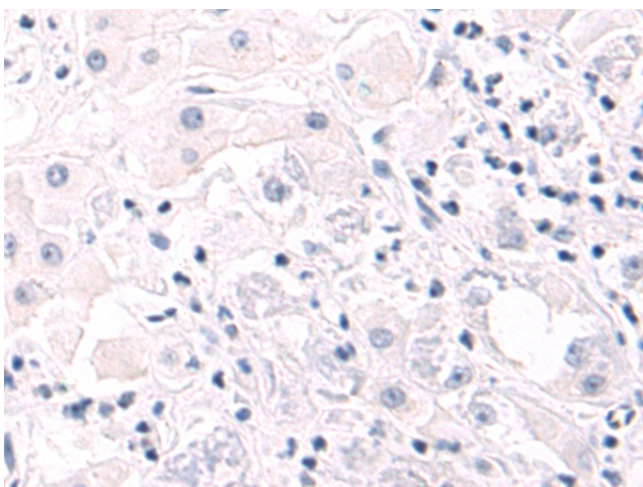
Immunohistochemistry of paraffin-embedded Human tonsil tissue using [TA351404] (MAP3K11 Antibody) at dilution 1/30 (Original magnification: ×200)



Immunohistochemistry of paraffin-embedded Human tonsil tissue using [TA351404] (MAP3K11 Antibody) at dilution 1/30, treated with synthetic peptide. (Original magnification: ×200)



Immunohistochemistry of paraffin-embedded Human gastric cancer tissue using [TA351404] (MAP3K11 Antibody) at dilution 1/30 (Original magnification: ×200)



Immunohistochemistry of paraffin-embedded Human gastric cancer tissue using [TA351404] (MAP3K11 Antibody) at dilution 1/30, treated with synthetic peptide. (Original magnification: ×200)