

## Product datasheet for **TA351404**

### MLK3 (MAP3K11) Rabbit Polyclonal Antibody

#### Product data:

|                         |  |
|-------------------------|--|
| Product Type:           | Primary Antibodies   |
| Applications:           | IHC, WB  |
| Recommended Dilution:   | WB: 500-2000<br>WB positive control: MCF7, PC3, LO2, NIH/3T3 cell lysates<br>IHC: 50-200<br>Positive control: Human colorectal cancer<br>Predicted cell location: Cytoplasm  |
| Reactivity:             | Human, Mouse, Rat  |
| Host:                   | Rabbit   |
| Isotype:                | IgG  |
| Clonality:              | Polyclonal   |
| Immunogen:              | Synthetic peptide of human MAP3K11   |
| Formulation:            | pH7.4 PBS, 0.05% NaN <sub>3</sub> , 40% Glycerol   |
| Concentration:          | lot specific   |
| Purification:           | Antigen affinity purification  |
| Conjugation:            | Unconjugated   |
| Storage:                | Store at -20°C as received.  |
| Stability:              | Stable for 12 months from date of receipt.   |
| Predicted Protein Size: | 93 kDa   |
| Gene Name:              | mitogen-activated protein kinase kinase kinase 11  |
| Database Link:          | <a href="#">NP_002410</a><br><a href="#">Entrez Gene 26403 Mouse</a> <a href="#">Entrez Gene 309168 Rat</a> <a href="#">Entrez Gene 4296 Human</a><br><a href="#">Q16584</a> |



[View online »](#)

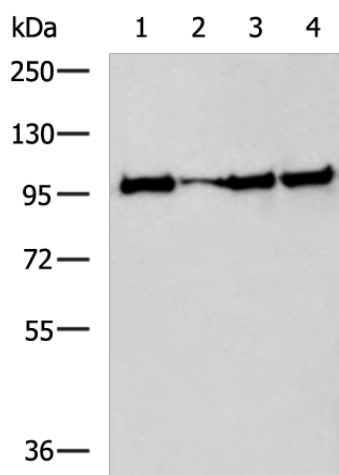
**Background:** The protein encoded by this gene is a member of the serine/threonine kinase family. This kinase contains a SH3 domain and a leucine zipper-basic motif. This kinase preferentially activates MAPK8/JNK kinase, and functions as a positive regulator of JNK signaling pathway. This kinase can directly phosphorylate, and activates I $\kappa$ B kinase alpha and beta, and is found to be involved in the transcription activity of NF-kappaB mediated by Rho family GTPases and CDC42.

**Synonyms:** MEKK11; MLK-3; MLK3; PTK1; SPRK

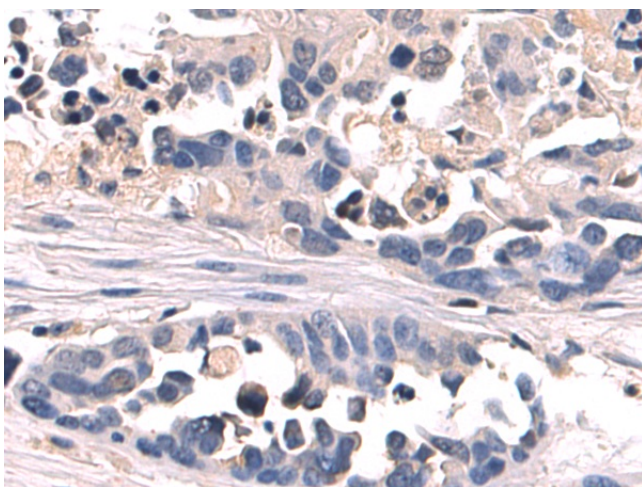
**Protein Families:** Druggable Genome, Protein Kinase

**Protein Pathways:** MAPK signaling pathway

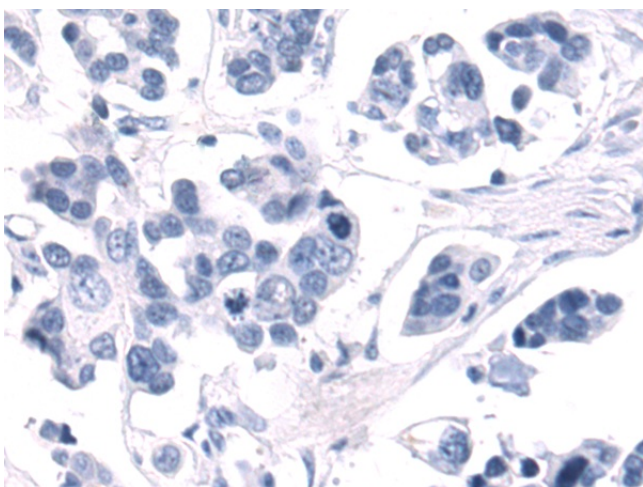
### Product images:



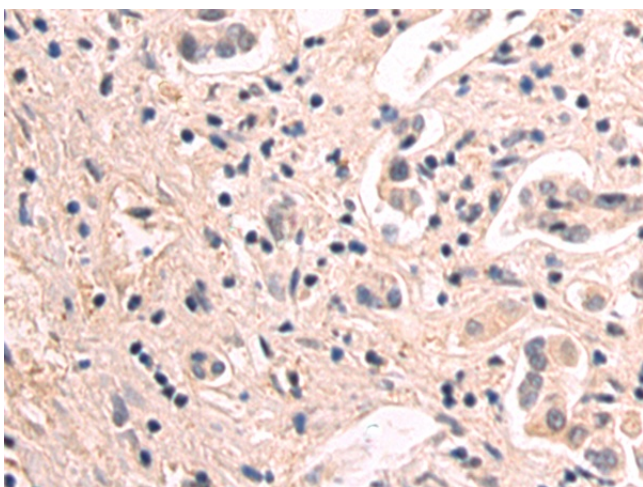
Gel: 6%SDS-PAGE  
Lysate: 40  $\mu$ g  
Lane 1-2: LO2 and PC-3 cell lysates  
Primary antibody: TA351404 (MAP3K11 Antibody)  
at dilution 1/400  
Secondary antibody: Goat anti rabbit IgG at  
1/5000 dilution  
Exposure time: 5 minutes



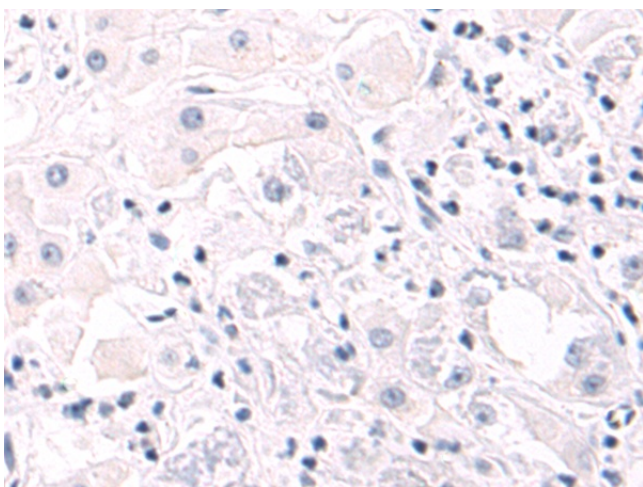
Immunohistochemistry of paraffin-embedded  
Human tonsil tissue using TA351404 (MAP3K11  
Antibody) at dilution 1/30 (Original magnification:  
 $\times 200$ )



Immunohistochemistry of paraffin-embedded Human tonsil tissue using TA351404 (MAP3K11 Antibody) at dilution 1/30, treated with synthetic peptide. (Original magnification:  $\times 200$ )



Immunohistochemistry of paraffin-embedded Human gastric cancer tissue using TA351404 (MAP3K11 Antibody) at dilution 1/30 (Original magnification:  $\times 200$ )



Immunohistochemistry of paraffin-embedded Human gastric cancer tissue using TA351404 (MAP3K11 Antibody) at dilution 1/30, treated with synthetic peptide. (Original magnification:  $\times 200$ )