

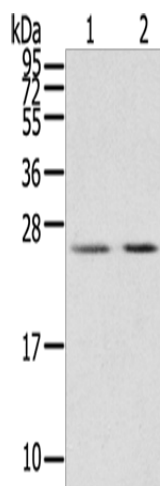
## Product datasheet for **TA351401S**

### MIG7 Rabbit Polyclonal Antibody

#### Product data:

Product Type:	Primary Antibodies
Applications:	IHC, WB
Recommended Dilution:	WB: 200-1000 WB positive control: Human breast infiltrative duct and placenta tissue IHC: 50-200 Positive control: Human ovarian cancer Predicted cell location: Cytoplasm
Reactivity:	Human
Host:	Rabbit
Isotype:	IgG
Clonality:	Polyclonal
Immunogen:	Synthetic peptide of human MIG7
Formulation:	pH7.4 PBS, 0.05% NaN <sub>3</sub> , 40% Glycerol
Purification:	Antigen affinity purification
Conjugation:	Unconjugated
Storage:	Store at -20°C as received.
Stability:	Stable for 12 months from date of receipt.
Predicted Protein Size:	23 kDa
Gene Name:	mig-7
Database Link:	<a href="#">ABF71424</a> <a href="#">Entrez Gene 723788 Human</a>
Background:	MIG-7 protein inhibited protein phosphatase 2A to sustain Akt/GSK-3 $\beta$ phosphorylation and cancer-cell migration/invasion. Cancer cells overexpressing MIG-7 exhibited increased expression of ZEB-1 and Twist in parallel with epithelial-mesenchymal transition, metastasis and cancer lethality. MIG-7 protein level positively correlated with advanced stages of human lung cancers.

[View online »](#)

**Product images:**


Gel: 12%SDS-PAGE

Lysate: 40 µg

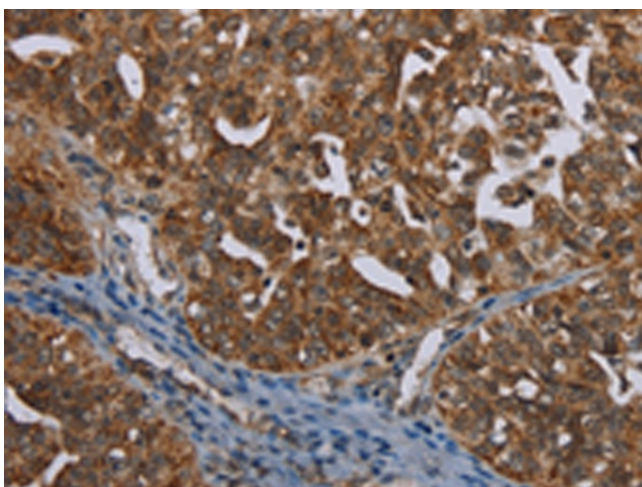
Lane 1-2: Human breast infiltrative duct tissue

Human placenta tissue

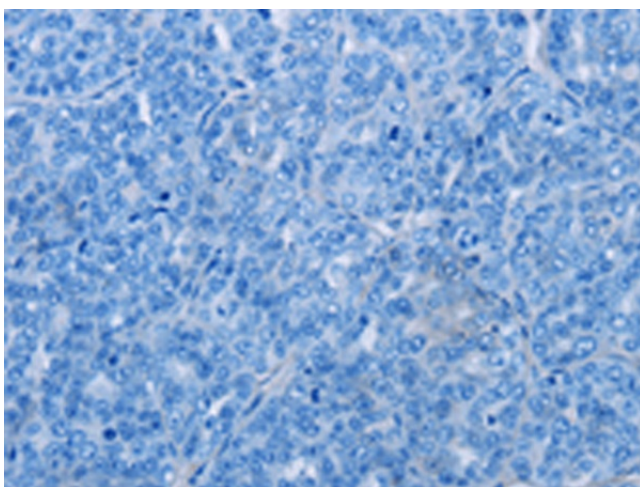
Primary antibody: [TA351401] (MIG7 Antibody) at dilution 1/200

Secondary antibody: Goat anti rabbit IgG at 1/8000 dilution

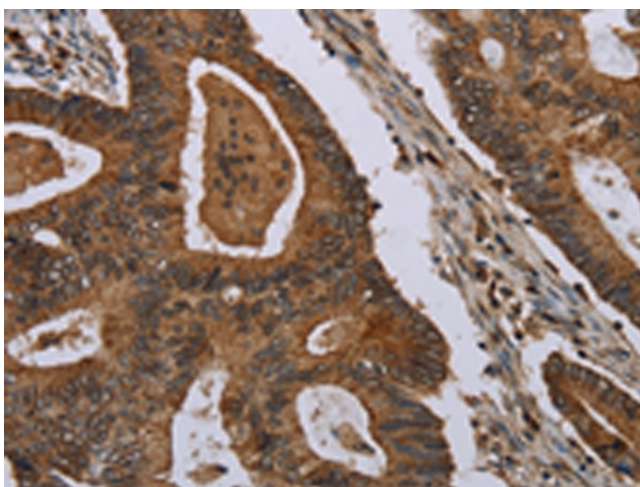
Exposure time: 15 seconds



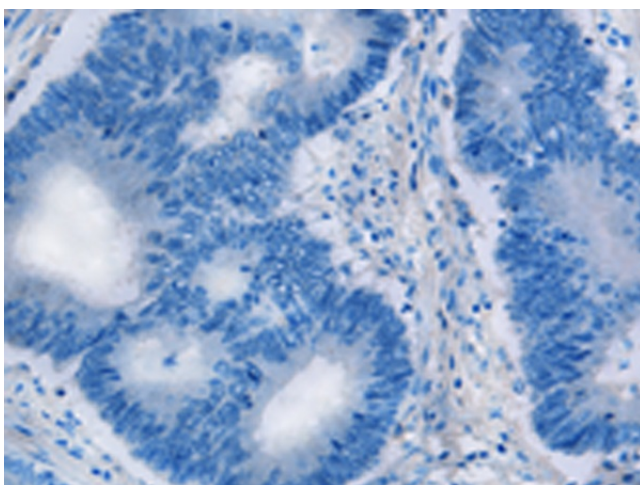
Immunohistochemistry of paraffin-embedded Human ovarian cancer tissue using [TA351401] (MIG7 Antibody) at dilution 1/35 (Original magnification: ×200)



Immunohistochemistry of paraffin-embedded Human ovarian cancer tissue using [TA351401] (MIG7 Antibody) at dilution 1/35, treated with synthetic peptide. (Original magnification: ×200)



Immunohistochemistry of paraffin-embedded Human colon cancer tissue using [TA351401] (MIG7 Antibody) at dilution 1/35 (Original magnification: ×200)



Immunohistochemistry of paraffin-embedded Human colon cancer tissue using [TA351401] (MIG7 Antibody) at dilution 1/35, treated with synthetic peptide. (Original magnification: ×200)