

## Product datasheet for **TA351400**

### CYP7A1 Rabbit Polyclonal Antibody

#### Product data:

|                         |   |
|-------------------------|---|
| Product Type:           | Primary Antibodies  |
| Applications:           | IHC, WB   |
| Recommended Dilution:   | WB: 500-2000<br>WB positive control: K562 and HepG2 cells, Human fetal liver and liver cancer tissue, Jurkat cells<br>IHC: 25-100<br>Positive control: Human thyroid cancer<br>Predicted cell location: Cytoplasm |
| Reactivity:             | Human, Mouse  |
| Host:                   | Rabbit  |
| Isotype:                | IgG   |
| Clonality:              | Polyclonal  |
| Immunogen:              | Synthetic peptide of human CYP7A1   |
| Formulation:            | pH7.4 PBS, 0.05% NaN <sub>3</sub> , 40% Glycerol  |
| Concentration:          | lot specific  |
| Purification:           | Antigen affinity purification   |
| Conjugation:            | Unconjugated  |
| Storage:                | Store at -20°C as received.   |
| Stability:              | Stable for 12 months from date of receipt.  |
| Predicted Protein Size: | 58 kDa  |
| Gene Name:              | cytochrome P450 family 7 subfamily A member 1   |
| Database Link:          | <a href="#">NP_000771</a><br><a href="#">Entrez Gene 1581 Human P22680</a>  |



[View online »](#)

**Background:**

This gene encodes a member of the cytochrome P450 superfamily of enzymes. The cytochrome P450 proteins are monooxygenases which catalyze many reactions involved in drug metabolism and synthesis of cholesterol, steroids and other lipids. This endoplasmic reticulum membrane protein catalyzes the first reaction in the cholesterol catabolic pathway in the liver, which converts cholesterol to bile acids.

**Synonyms:**

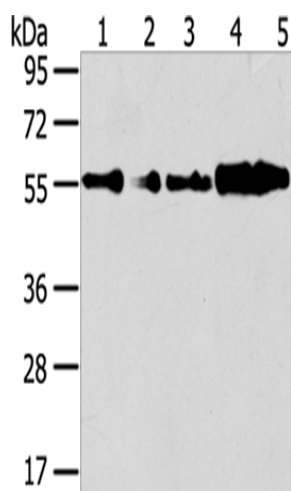
CP7A; CYP7; CYPVII

**Protein Families:**

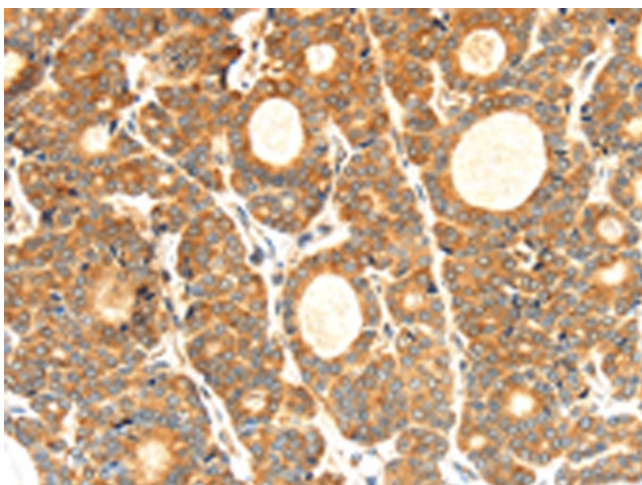
Druggable Genome, ES Cell Differentiation/IPS, P450, Transmembrane

**Protein Pathways:**

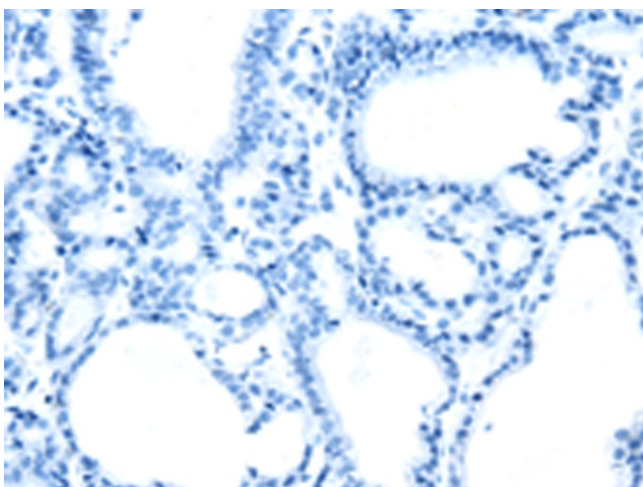
Metabolic pathways, PPAR signaling pathway, Primary bile acid biosynthesis

**Product images:**

Gel: 8%SDS-PAGE  
Lysate: 40 µg  
Lane 1-5: K562 cells  
HepG2 cells  
Human fetal liver tissue  
Human liver cancer tissue  
Jurkat cells  
Primary antibody: TA351400 (CYP7A1 Antibody)  
at dilution 1/250  
Secondary antibody: Goat anti rabbit IgG at  
1/8000 dilution  
Exposure time: 1 minute



Immunohistochemistry of paraffin-embedded  
Human thyroid cancer tissue using TA351400  
(CYP7A1 Antibody) at dilution 1/30 (Original  
magnification: ×200)



Immunohistochemistry of paraffin-embedded Human thyroid cancer tissue using TA351400 (CYP7A1 Antibody) at dilution 1/30, treated with synthetic peptide. (Original magnification: ×200)