

## Product datasheet for **TA351399**

### ATP2A1 Rabbit Polyclonal Antibody

#### Product data:

Product Type:	Primary Antibodies
Applications:	IHC, WB
Recommended Dilution:	ELISA: 2000-5000, WB: 200-1000, IHC: 50-200
Reactivity:	Human, Mouse
Host:	Rabbit
Isotype:	IgG
Clonality:	Polyclonal
Immunogen:	Synthetic peptide of human ATP2A1
Formulation:	pH7.4 PBS, 0.05% NaN <sub>3</sub> , 40% Glycerol
Concentration:	lot specific
Purification:	Antigen affinity purification
Conjugation:	Unconjugated
Storage:	Store at -20°C as received.
Stability:	Stable for 12 months from date of receipt.
Predicted Protein Size:	110 kDa
Gene Name:	ATPase sarcoplasmic/endoplasmic reticulum Ca <sup>2+</sup> transporting 1
Database Link:	<a href="#">NP_775293</a> <a href="#">Entrez Gene 11937 Mouse</a> <a href="#">Entrez Gene 487 Human</a> <a href="#">O14983</a>
Background:	This gene encodes one of the SERCA Ca <sup>2+</sup> -ATPases, which are intracellular pumps located in the sarcoplasmic or endoplasmic reticula of muscle cells. This enzyme catalyzes the hydrolysis of ATP coupled with the translocation of calcium from the cytosol to the sarcoplasmic reticulum lumen, and is involved in muscular excitation and contraction. Mutations in this gene cause some autosomal recessive forms of Brody disease, characterized by increasing impairment of muscular relaxation during exercise. Alternative splicing results in three transcript variants encoding different isoforms.
Synonyms:	ATP2A; SERCA1

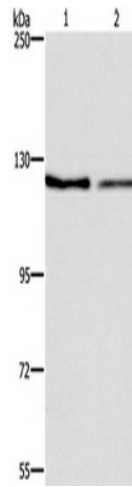


[View online »](#)

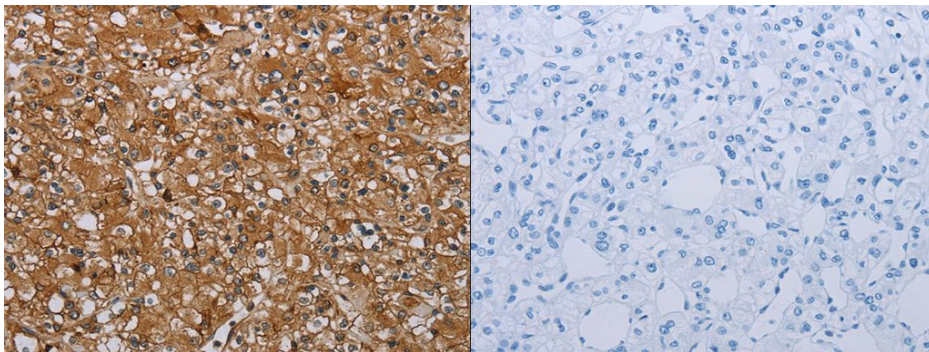
**Protein Families:** Druggable Genome, Transmembrane

**Protein Pathways:** Alzheimer's disease, Calcium signaling pathway

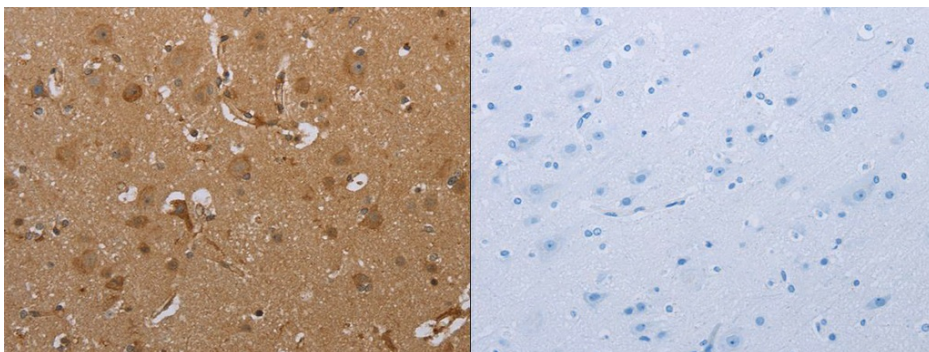
**Product images:**



Gel: 6%SDS-PAGE, Lysate: 40 ug, Lane 1-2: NIH/3T3 cells, LoVo cells, Primary antibody: (ATP2A1 Antibody) at dilution 1/500, Secondary antibody: Goat anti rabbit IgG at 1/8000 dilution, Exposure time: 3 minutes



The image on the left is immunohistochemistry of paraffin-embedded Human prostate cancer tissue using (ATP2A1 Antibody) at dilution 1/35, on the right is treated with synthetic peptide. (Original magnification: ×200)



The image on the left is immunohistochemistry of paraffin-embedded Human brain tissue using (ATP2A1 Antibody) at dilution 1/35, on the right is treated with synthetic peptide. (Original magnification: ×200)