

## Product datasheet for **TA351394S**

### MFSD2A Rabbit Polyclonal Antibody

#### Product data:

Product Type:	Primary Antibodies
Applications:	IHC, WB
Recommended Dilution:	WB: 500-2000 WB positive control: Human thyroid cancer, mouse liver and human fetal liver tissue, A549 and 293T cells IHC: 25-100 Positive control: Human liver cancer Predicted cell location: Cytoplasm
Reactivity:	Human, Mouse
Host:	Rabbit
Isotype:	IgG
Clonality:	Polyclonal
Immunogen:	Synthetic peptide of human MFSD2A
Formulation:	pH7.4 PBS, 0.05% NaN <sub>3</sub> , 40% Glycerol
Purification:	Antigen affinity purification
Conjugation:	Unconjugated
Storage:	Store at -20°C as received.
Stability:	Stable for 12 months from date of receipt.
Predicted Protein Size:	60 kDa
Gene Name:	major facilitator superfamily domain containing 2A
Database Link:	<a href="#">NP_001129965</a> <a href="#">Entrez Gene 76574 Mouse</a> <a href="#">Entrez Gene 84879 Human</a> <a href="#">Q8NA29</a>



[View online »](#)

**Background:**

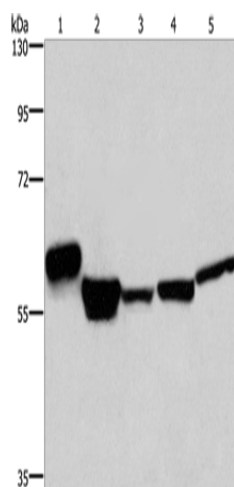
MFSD2 (major facilitator superfamily domain containing 2), also known as MFSD2A, is a 543 amino acid multi-pass membrane protein of the endoplasmic reticulum that is involved in beta-adrenergic signaling during thermogenesis. Existing as three alternatively spliced isoforms, MFSD2 plays a role in G1 regulation and is encoded by a gene that maps to human chromosome 1p34.2. Human chromosome 1 spans 260 million base pairs, contains over 3,000 genes, comprises nearly 8% of the human genome and houses a large number of disease-associated genes, including those that are involved in familial adenomatous polyposis, Stickler syndrome, Parkinson's disease, Gaucher disease, schizophrenia and Usher syndrome.

**Synonyms:**

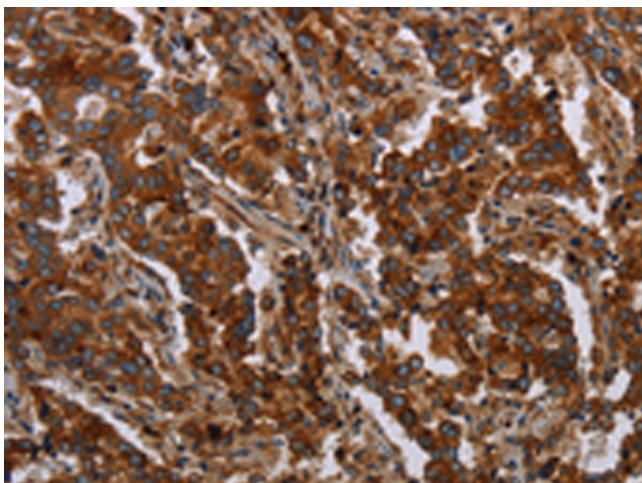
MCPH15; MFSD2; NLS1

**Protein Families:**

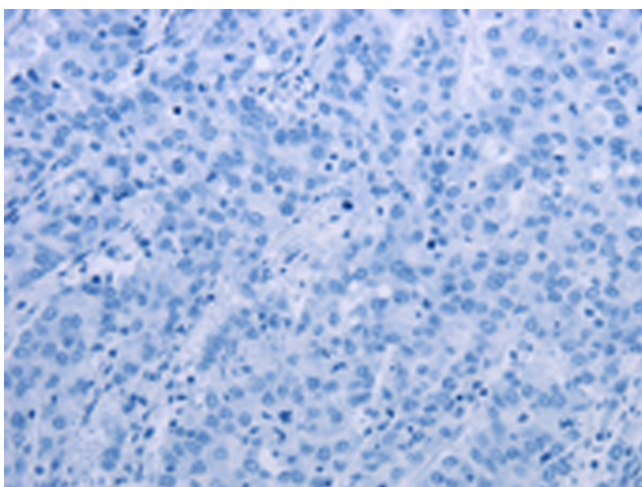
Transmembrane

**Product images:**


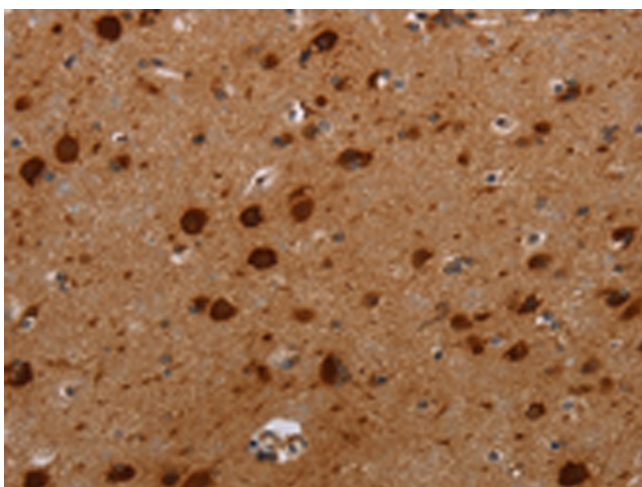
Gel: 8%SDS-PAGE  
 Lysate: 40 µg  
 Lane 1-5: Human thyroid cancer tissue  
 mouse liver tissue  
 human fetal liver tissue  
 A549 cells  
 293T cells  
 Primary antibody: [TA351394] (MFSD2A Antibody)  
 at dilution 1/300  
 Secondary antibody: Goat anti rabbit IgG at  
 1/8000 dilution  
 Exposure time: 1 minute



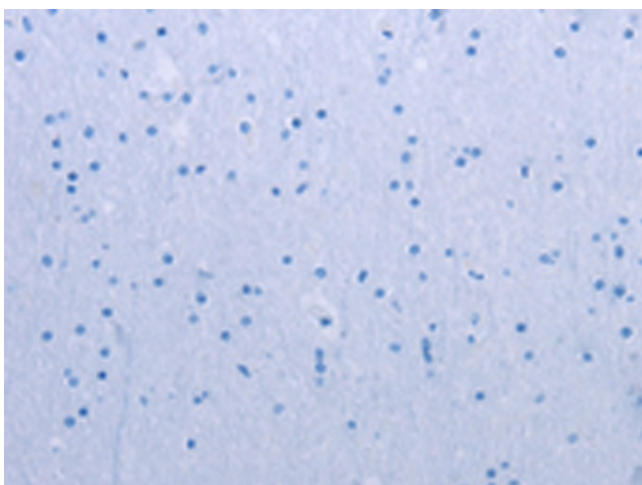
Immunohistochemistry of paraffin-embedded  
 Human liver cancer tissue using [TA351394]  
 (MFSD2A Antibody) at dilution 1/25 (Original  
 magnification: x200)



Immunohistochemistry of paraffin-embedded Human liver cancer tissue using [TA351394] (MFSD2A Antibody) at dilution 1/25, treated with synthetic peptide. (Original magnification: ×200)



Immunohistochemistry of paraffin-embedded Human brain tissue using [TA351394] (MFSD2A Antibody) at dilution 1/25 (Original magnification: ×200)



Immunohistochemistry of paraffin-embedded Human brain tissue using [TA351394] (MFSD2A Antibody) at dilution 1/25, treated with synthetic peptide. (Original magnification: ×200)