

Product datasheet for **TA351389S**

MCHR (MCHR1) Rabbit Polyclonal Antibody

Product data:

Product Type:	Primary Antibodies
Applications:	IHC, WB
Recommended Dilution:	WB: 500-2000 WB positive control: Human fetal liver and testis tissue, 293T and A172 cells, mouse brain and human fetal brain tissue IHC: 50-200 Positive control: Human ovarian cancer Predicted cell location: Cytoplasm
Reactivity:	Human, Mouse, Rat
Host:	Rabbit
Isotype:	IgG
Clonality:	Polyclonal
Immunogen:	Synthetic peptide of human MCHR1
Formulation:	pH7.4 PBS, 0.05% NaN ₃ , 40% Glycerol
Purification:	Antigen affinity purification
Conjugation:	Unconjugated
Storage:	Store at -20°C as received.
Stability:	Stable for 12 months from date of receipt.
Predicted Protein Size:	46 kDa
Gene Name:	melanin concentrating hormone receptor 1
Database Link:	NP_005288 Entrez Gene 83567 Rat Entrez Gene 207911 Mouse Entrez Gene 2847 Human Q99705
Background:	MCHR1, a member of the G protein coupled receptor family 1, is an integral plasma membrane protein which binds melanin concentrating hormone. MCHR1 can inhibit cAMP accumulation and stimulate intracellular calcium flux, and is probably involved in the neuronal regulation of food consumption. Although structurally similar to somatostatin receptors, MCHR1 does not seem to bind somatostatin.



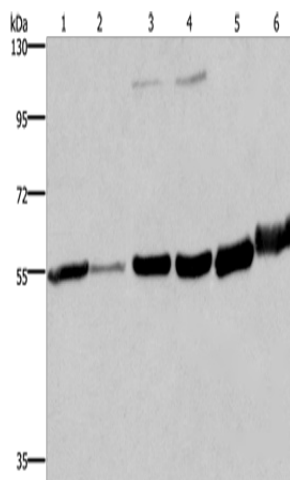
[View online »](#)

Synonyms: GPR24; MCH-1R; MCH1R; SLC-1; SLC1

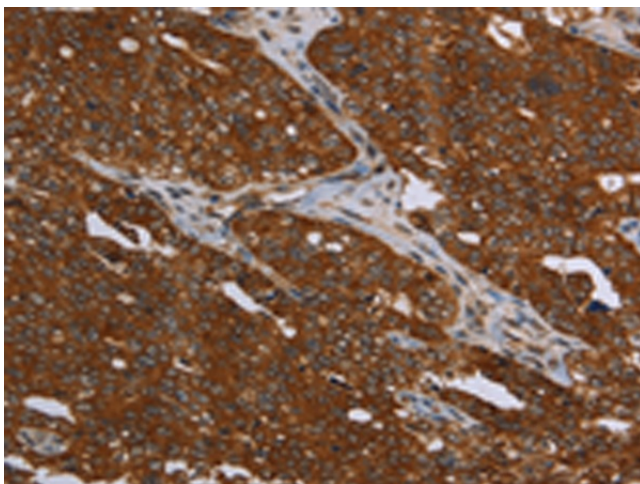
Protein Families: Druggable Genome, GPCR, Transmembrane

Protein Pathways: Neuroactive ligand-receptor interaction

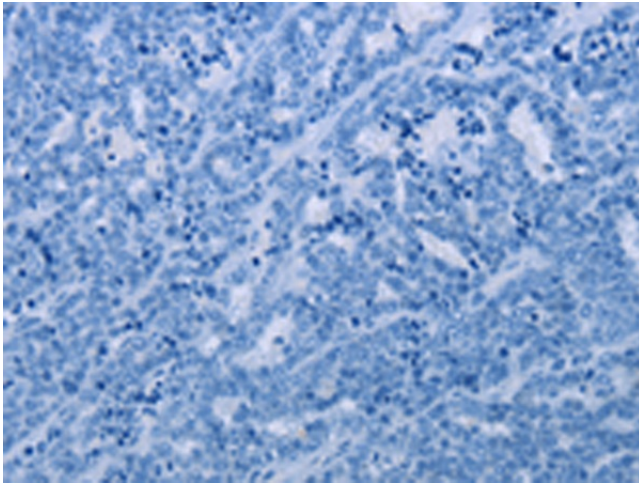
Product images:



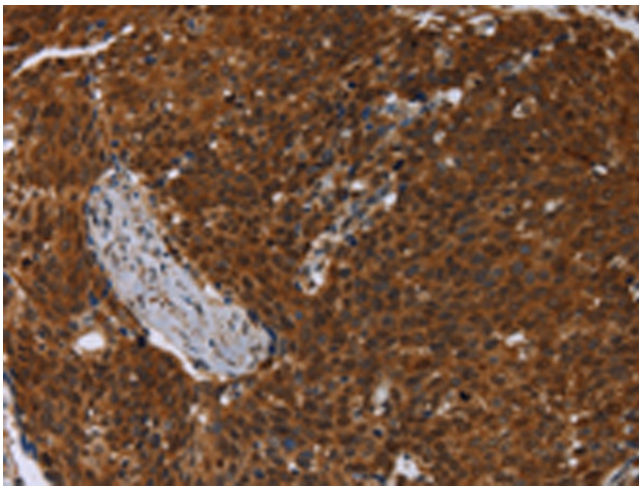
Gel: 8%SDS-PAGE
Lysate: 40 μ g
Lane 1-6: Human fetal liver tissue
Human testis tissue
293T cells
A172 cells
mouse brain tissue
human fetal brain tissue
Primary antibody: [TA351389] (MCHR1 Antibody)
at dilution 1/350
Secondary antibody: Goat anti rabbit IgG at
1/8000 dilution
Exposure time: 1 minute



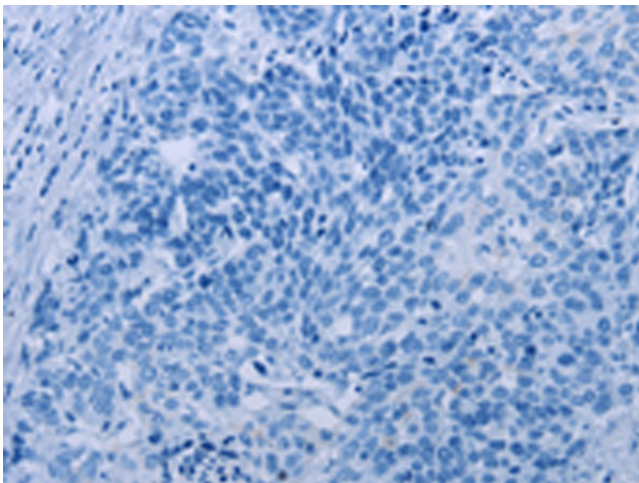
Immunohistochemistry of paraffin-embedded
Human ovarian cancer tissue using [TA351389]
(MCHR1 Antibody) at dilution 1/30 (Original
magnification: \times 200)



Immunohistochemistry of paraffin-embedded Human ovarian cancer tissue using [TA351389] (MCHR1 Antibody) at dilution 1/30, treated with synthetic peptide. (Original magnification: $\times 200$)



Immunohistochemistry of paraffin-embedded Human cervical cancer tissue using [TA351389] (MCHR1 Antibody) at dilution 1/30 (Original magnification: $\times 200$)



Immunohistochemistry of paraffin-embedded Human cervical cancer tissue using [TA351389] (MCHR1 Antibody) at dilution 1/30, treated with synthetic peptide. (Original magnification: $\times 200$)