

## Product datasheet for **TA351389**

### **MCHR (MCHR1) Rabbit Polyclonal Antibody**

#### **Product data:**

Product Type:	Primary Antibodies
Applications:	IHC, WB
Recommended Dilution:	WB: 500-2000 WB positive control: Human fetal liver and testis tissue, 293T and A172 cells, mouse brain and human fetal brain tissue IHC: 50-200 Positive control: Human ovarian cancer Predicted cell location: Cytoplasm
Reactivity:	Human, Mouse, Rat
Host:	Rabbit
Isotype:	IgG
Clonality:	Polyclonal
Immunogen:	Synthetic peptide of human MCHR1
Formulation:	pH7.4 PBS, 0.05% NaN <sub>3</sub> , 40% Glycerol
Concentration:	lot specific
Purification:	Antigen affinity purification
Conjugation:	Unconjugated
Storage:	Store at -20°C as received.
Stability:	Stable for 12 months from date of receipt.
Predicted Protein Size:	46 kDa
Gene Name:	melanin concentrating hormone receptor 1
Database Link:	<a href="#">NP_005288</a> <a href="#">Entrez Gene 83567 Rat</a> <a href="#">Entrez Gene 207911 Mouse</a> <a href="#">Entrez Gene 2847 Human</a> <a href="#">Q99705</a>



[View online »](#)

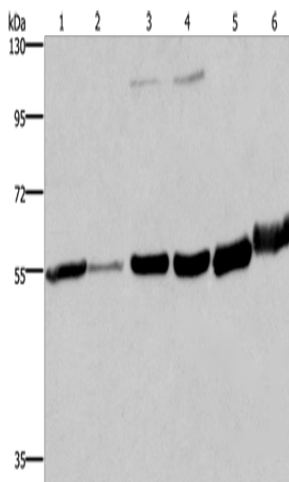
**Background:** MCHR1, a member of the G protein coupled receptor family 1, is an integral plasma membrane protein which binds melanin concentrating hormone. MCHR1 can inhibit cAMP accumulation and stimulate intracellular calcium flux, and is probably involved in the neuronal regulation of food consumption. Although structurally similar to somatostatin receptors, MCHR1 does not seem to bind somatostatin.

**Synonyms:** GPR24; MCH-1R; MCH1R; SLC-1; SLC1

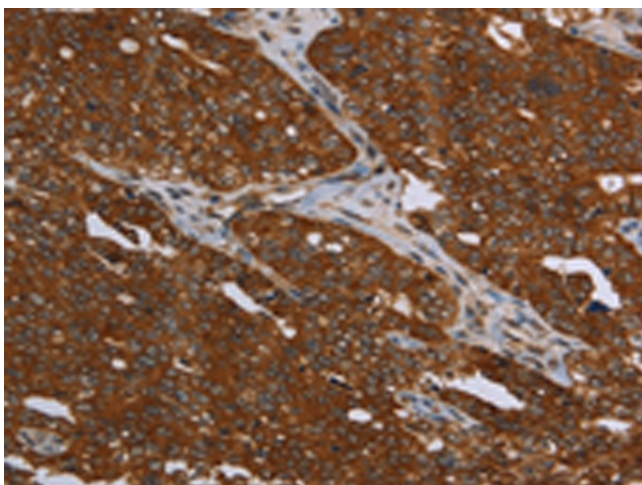
**Protein Families:** Druggable Genome, GPCR, Transmembrane

**Protein Pathways:** Neuroactive ligand-receptor interaction

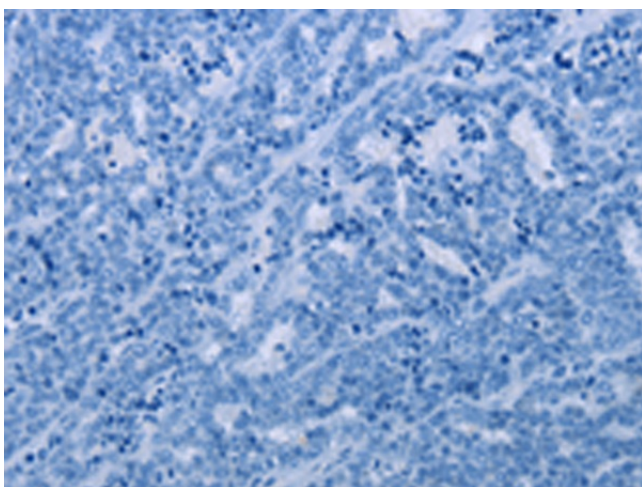
**Product images:**



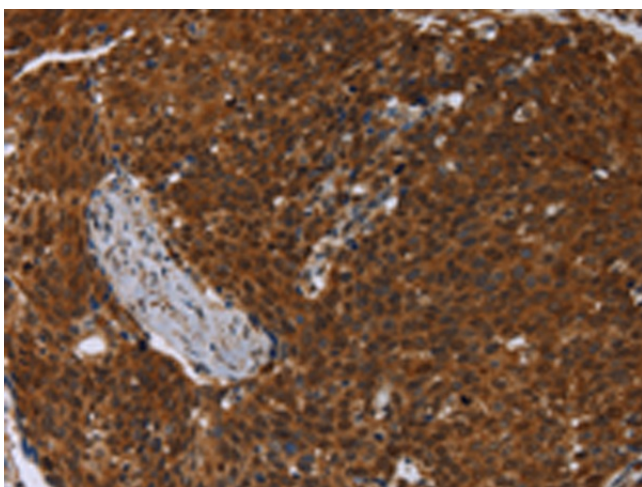
Gel: 8%SDS-PAGE  
 Lysate: 40 µg  
 Lane 1-6: Human fetal liver tissue  
 Human testis tissue  
 293T cells  
 A172 cells  
 mouse brain tissue  
 human fetal brain tissue  
 Primary antibody: TA351389 (MCHR1 Antibody) at dilution 1/350  
 Secondary antibody: Goat anti rabbit IgG at 1/8000 dilution  
 Exposure time: 1 minute



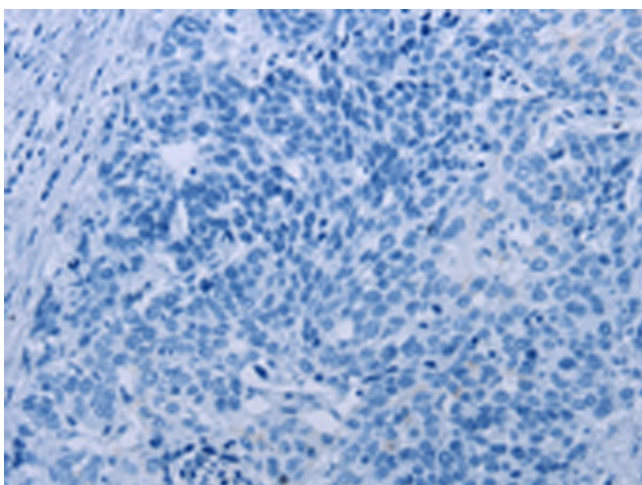
Immunohistochemistry of paraffin-embedded Human ovarian cancer tissue using TA351389 (MCHR1 Antibody) at dilution 1/30 (Original magnification: ×200)



Immunohistochemistry of paraffin-embedded Human ovarian cancer tissue using TA351389 (MCHR1 Antibody) at dilution 1/30, treated with synthetic peptide. (Original magnification: ×200)



Immunohistochemistry of paraffin-embedded Human cervical cancer tissue using TA351389 (MCHR1 Antibody) at dilution 1/30 (Original magnification: ×200)



Immunohistochemistry of paraffin-embedded Human cervical cancer tissue using TA351389 (MCHR1 Antibody) at dilution 1/30, treated with synthetic peptide. (Original magnification: ×200)