

Product datasheet for **TA351386**

MAVS Rabbit Polyclonal Antibody

Product data:

Product Type:	Primary Antibodies
Applications:	IHC, WB
Recommended Dilution:	WB: 500-2000 WB positive control: Mouse heart tissue IHC: 50-200 Positive control: Human colon cancer Predicted cell location: Cytoplasm
Reactivity:	Human, Mouse
Host:	Rabbit
Isotype:	IgG
Clonality:	Polyclonal
Immunogen:	Synthetic peptide of human MAVS
Formulation:	pH7.4 PBS, 0.05% NaN ₃ , 40% Glycerol
Concentration:	lot specific
Purification:	Antigen affinity purification
Conjugation:	Unconjugated
Storage:	Store at -20°C as received.
Stability:	Stable for 12 months from date of receipt.
Predicted Protein Size:	57 kDa
Gene Name:	mitochondrial antiviral signaling protein
Database Link:	NP_001193420 Entrez Gene 228607 Mouse Entrez Gene 57506 Human Q7Z434
Background:	This gene encodes an intermediary protein necessary in the virus-triggered beta interferon signaling pathways. It is required for activation of transcription factors which regulate expression of beta interferon and contributes to antiviral immunity. Multiple transcript variants encoding different isoforms have been found for this gene
Synonyms:	CARDIF; IPS-1; IPS1; VISA



[View online »](#)

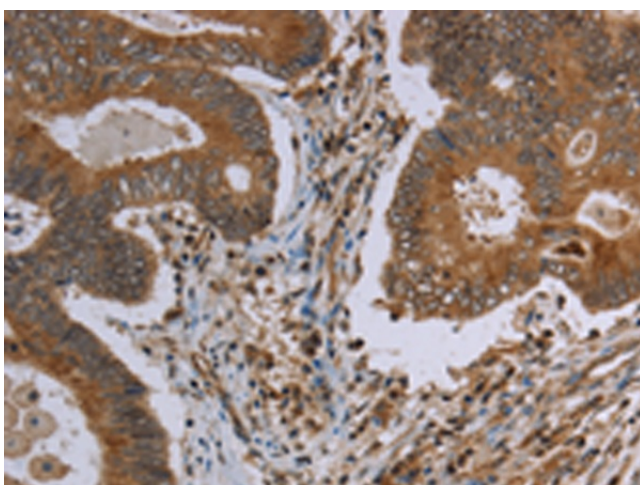
Protein Families: Transmembrane

Protein Pathways: Cytosolic DNA-sensing pathway, RIG-I-like receptor signaling pathway

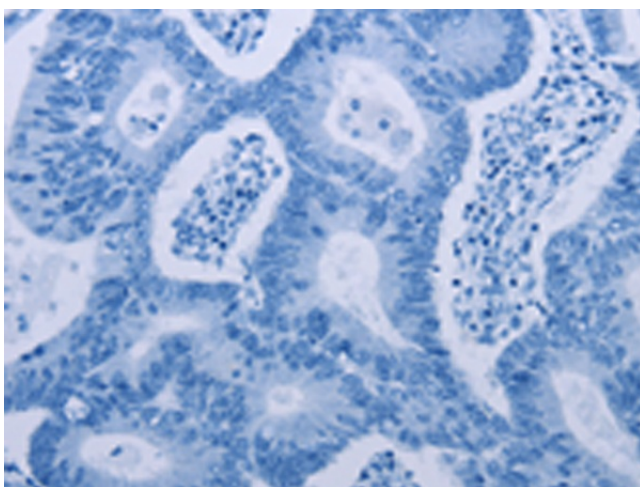
Product images:



Gel: 8%SDS-PAGE
Lysate: 40 μ g
Lane: Mouse heart tissue
Primary antibody: TA351386 (MAVS Antibody) at dilution 1/250
Secondary antibody: Goat anti rabbit IgG at 1/8000 dilution
Exposure time: 1 minute



Immunohistochemistry of paraffin-embedded Human colon cancer tissue using TA351386 (MAVS Antibody) at dilution 1/30 (Original magnification: \times 200)



Immunohistochemistry of paraffin-embedded Human colon cancer tissue using TA351386 (MAVS Antibody) at dilution 1/30, treated with synthetic peptide. (Original magnification: $\times 200$)