

## Product datasheet for **TA351384**

### MARK4 Rabbit Polyclonal Antibody

#### Product data:

Product Type:	Primary Antibodies
Applications:	IHC
Recommended Dilution:	IHC: 50-200 Positive control: Human brain Predicted cell location: Cytoplasm
Reactivity:	Human, Mouse
Host:	Rabbit
Isotype:	IgG
Clonality:	Polyclonal
Immunogen:	Synthetic peptide of human MARK4
Formulation:	pH7.4 PBS, 0.05% NaN <sub>3</sub> , 40% Glycerol
Concentration:	lot specific
Purification:	Antigen affinity purification
Conjugation:	Unconjugated
Storage:	Store at -20°C as received.
Stability:	Stable for 12 months from date of receipt.
Gene Name:	microtubule affinity regulating kinase 4
Database Link:	<a href="#">NP_113605</a> <a href="#">Entrez Gene 232944 Mouse</a> <a href="#">Entrez Gene 57787 Human</a> <a href="#">Q96L34</a>

**Background:** This gene encodes a member of the microtubule affinity-regulating kinase family. These protein kinases phosphorylate microtubule-associated proteins and regulate the transition between stable and dynamic microtubules. The encoded protein is associated with the centrosome throughout mitosis and may be involved in cell cycle control. Expression of this gene is a potential marker for cancer, and the encoded protein may also play a role in Alzheimer's disease. Pseudogenes of this gene are located on both the short and long arm of chromosome 3. Alternatively spliced transcript variants encoding multiple isoforms have been observed for this gene.

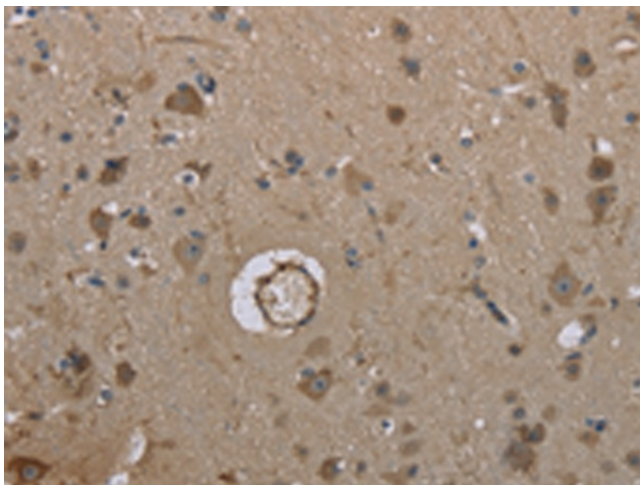


[View online »](#)

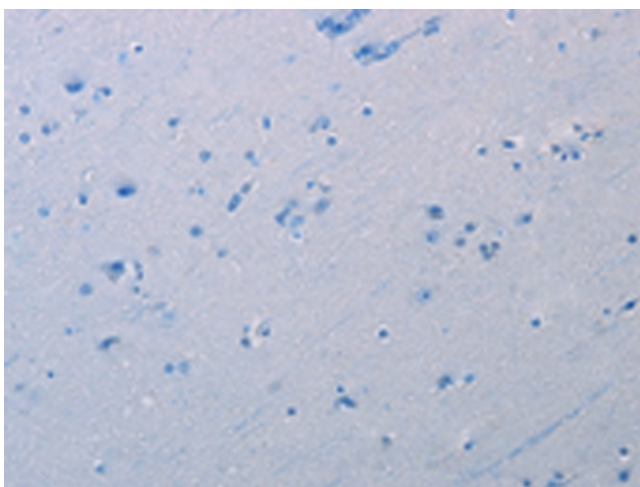
**Synonyms:** MARK4L; MARK4S; MARKL1; MARKL1L; PAR-1D

**Protein Families:** Druggable Genome, Protein Kinase

**Product images:**



Immunohistochemistry of paraffin-embedded Human brain tissue using TA351384 (MARK4 Antibody) at dilution 1/40 (Original magnification:  $\times 200$ )



Immunohistochemistry of paraffin-embedded Human brain tissue using TA351384 (MARK4 Antibody) at dilution 1/40, treated with synthetic peptide. (Original magnification:  $\times 200$ )