

## Product datasheet for **TA351383**

### MARK1 Rabbit Polyclonal Antibody

#### Product data:

Product Type:	Primary Antibodies
Applications:	IHC, WB
Recommended Dilution:	WB: 200-1000 WB positive control: K562 cells IHC: 50-200 Positive control: Human brain Predicted cell location: Cytoplasm and Nucleus
Reactivity:	Human
Host:	Rabbit
Isotype:	IgG
Clonality:	Polyclonal
Immunogen:	Synthetic peptide of human MARK1
Formulation:	pH7.4 PBS, 0.05% NaN <sub>3</sub> , 40% Glycerol
Concentration:	lot specific
Purification:	Antigen affinity purification
Conjugation:	Unconjugated
Storage:	Store at -20°C as received.
Stability:	Stable for 12 months from date of receipt.
Predicted Protein Size:	89 kDa
Gene Name:	microtubule affinity regulating kinase 1
Database Link:	<a href="#">NP_061120</a> <a href="#">Entrez Gene 4139 Human</a> <a href="#">Q9P0L2</a>



[View online »](#)

**Background:**

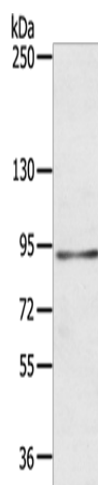
MARK1 is a 795 amino acid protein belonging to the CAMK Ser/Thr protein kinase family. MARK1 is thought to play a role in the stability of the microtubule matrix of the cytoskeleton. MARK1 is activated by phosphorylation of Thr215 by LKB1 in complex with STRAD and MO25. Localized to the cytoskeleton, MARK1 contains one kinase-associated (KA1) domain, one protein kinase domain and one UBA domain. Expressed as three isoforms produced by alternative splicing, MARK1 is found with highest levels in brain, skeletal muscle and heart.

**Synonyms:**

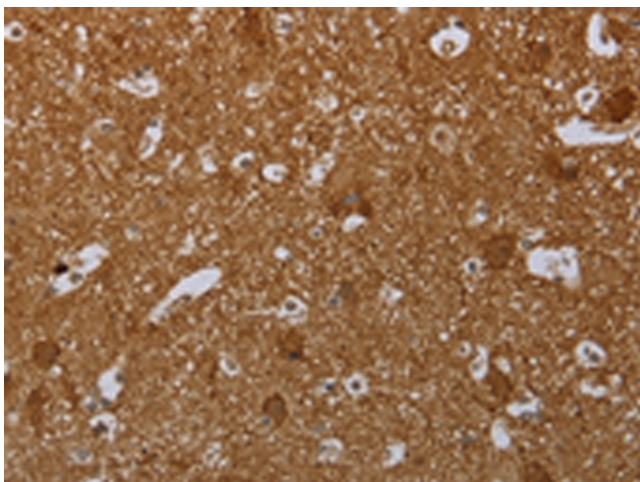
MARK; Par-1c; Par1c

**Protein Families:**

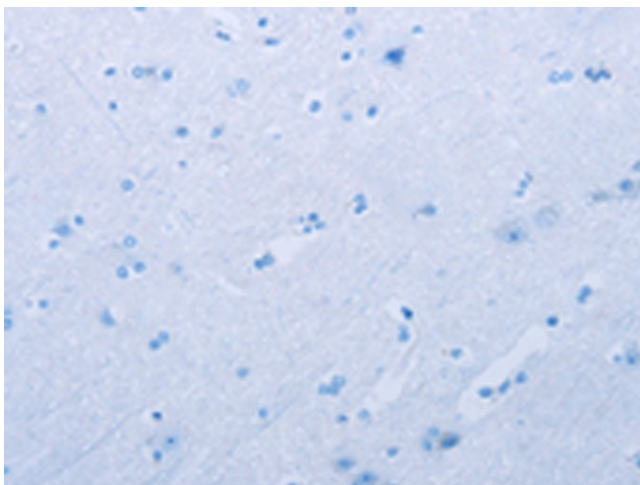
Druggable Genome, Protein Kinase

**Product images:**

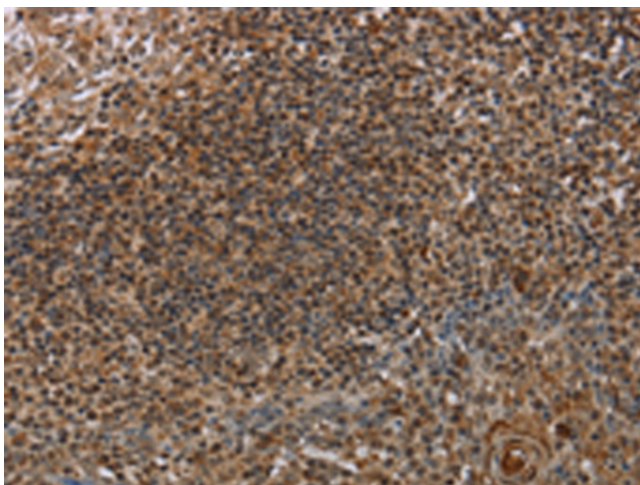
Gel: 6%SDS-PAGE  
Lysate: 40 µg  
Lane: K562 cells  
Primary antibody: TA351383 (MARK1 Antibody) at dilution 1/200  
Secondary antibody: Goat anti rabbit IgG at 1/8000 dilution  
Exposure time: 3 minutes



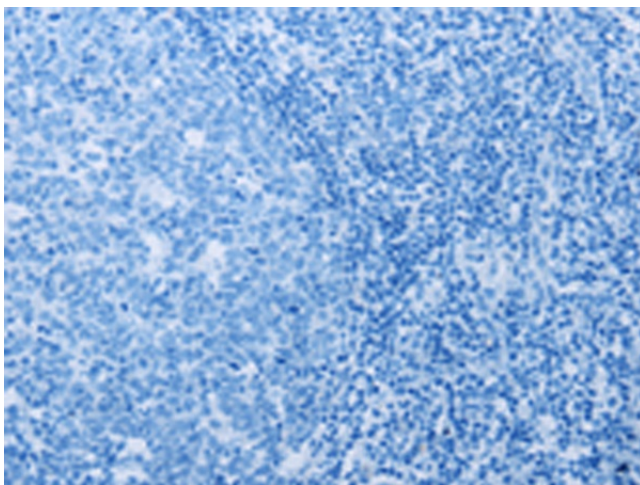
Immunohistochemistry of paraffin-embedded Human brain tissue using TA351383 (MARK1 Antibody) at dilution 1/40 (Original magnification: ×200)



Immunohistochemistry of paraffin-embedded Human brain tissue using TA351383 (MARK1 Antibody) at dilution 1/40, treated with synthetic peptide. (Original magnification:  $\times 200$ )



Immunohistochemistry of paraffin-embedded Human tonsil tissue using TA351383 (MARK1 Antibody) at dilution 1/40 (Original magnification:  $\times 200$ )



Immunohistochemistry of paraffin-embedded Human tonsil tissue using TA351383 (MARK1 Antibody) at dilution 1/40, treated with synthetic peptide. (Original magnification:  $\times 200$ )