

Product datasheet for **TA351382**

MAPKAP Kinase 2 (MAPKAPK2) Rabbit Polyclonal Antibody

Product data:

Product Type:	Primary Antibodies
Applications:	IHC, WB
Recommended Dilution:	WB: 200-1000 WB positive control: Human chromaffin cells tumor tissue and A431 cells IHC: 25-100 Positive control: Human liver cancer Predicted cell location: Cytoplasm
Reactivity:	Human, Mouse
Host:	Rabbit
Isotype:	IgG
Clonality:	Polyclonal
Immunogen:	Synthetic peptide of human MAPKAPK2
Formulation:	pH7.4 PBS, 0.05% NaN ₃ , 40% Glycerol
Concentration:	lot specific
Purification:	Antigen affinity purification
Conjugation:	Unconjugated
Storage:	Store at -20°C as received.
Stability:	Stable for 12 months from date of receipt.
Predicted Protein Size:	46 kDa
Gene Name:	mitogen-activated protein kinase-activated protein kinase 2
Database Link:	NP_116584 Entrez Gene 17164 Mouse Entrez Gene 9261 Human P49137



[View online »](#)

Background:

This gene encodes a member of the Ser/Thr protein kinase family. This kinase is regulated through direct phosphorylation by p38 MAP kinase. In conjunction with p38 MAP kinase, this kinase is known to be involved in many cellular processes including stress and inflammatory responses, nuclear export, gene expression regulation and cell proliferation. Heat shock protein HSP27 was shown to be one of the substrates of this kinase in vivo. Two transcript variants encoding two different isoforms have been found for this gene.

Synonyms:

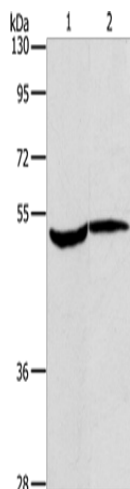
MAPKAP-K2; MK-2; MK2

Protein Families:

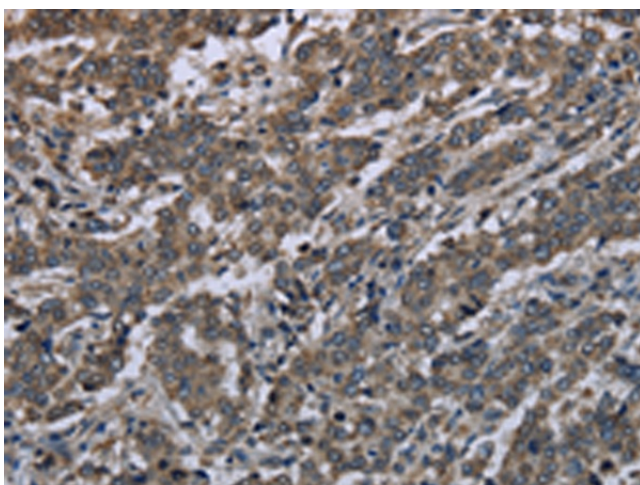
Druggable Genome, Protein Kinase

Protein Pathways:

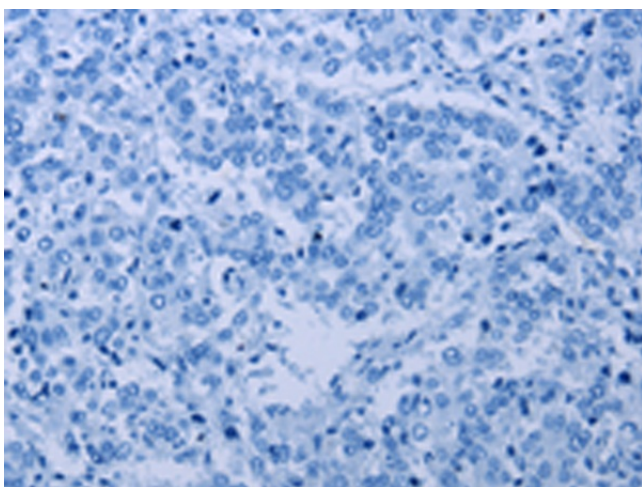
MAPK signaling pathway, Neurotrophin signaling pathway, VEGF signaling pathway

Product images:

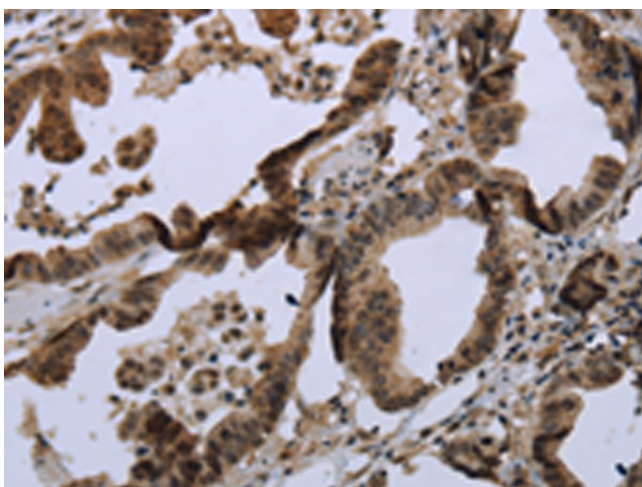
Gel: 8%SDS-PAGE
Lysate: 40 µg
Lane 1-2: Human chromaffin cell tumor tissue
A431 cells
Primary antibody: TA351382 (MAPKAPK2
Antibody) at dilution 1/350
Secondary antibody: Goat anti rabbit IgG at
1/8000 dilution
Exposure time: 6 minutes



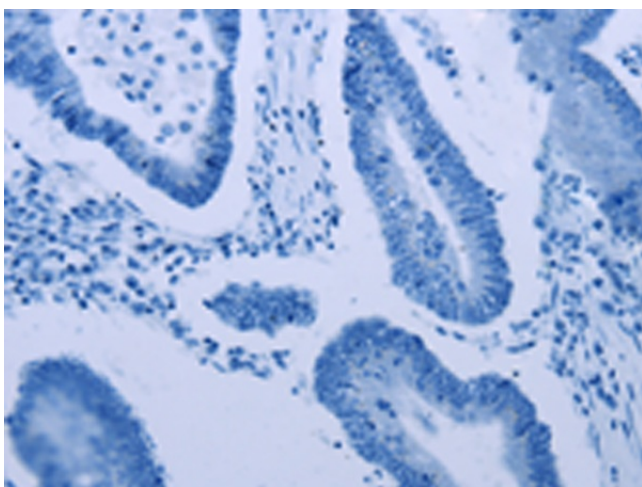
Immunohistochemistry of paraffin-embedded
Human liver cancer tissue using TA351382
(MAPKAPK2 Antibody) at dilution 1/20 (Original
magnification: ×200)



Immunohistochemistry of paraffin-embedded Human liver cancer tissue using TA351382 (MAPKAPK2 Antibody) at dilution 1/20, treated with synthetic peptide. (Original magnification: ×200)



Immunohistochemistry of paraffin-embedded Human colon cancer tissue using TA351382 (MAPKAPK2 Antibody) at dilution 1/20 (Original magnification: ×200)



Immunohistochemistry of paraffin-embedded Human colon cancer tissue using TA351382 (MAPKAPK2 Antibody) at dilution 1/20, treated with synthetic peptide. (Original magnification: ×200)