

Product datasheet for **TA351379**

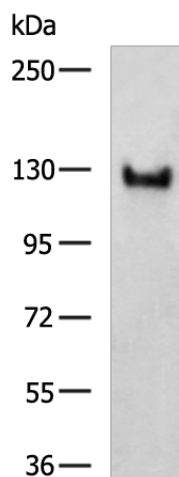
MAGEL2 Rabbit Polyclonal Antibody

Product data:

Product Type:	Primary Antibodies
Applications:	WB
Recommended Dilution:	WB: 500-2000 WB positive control: Jurkat cell lysate
Reactivity:	Human
Host:	Rabbit
Isotype:	IgG
Clonality:	Polyclonal
Immunogen:	Synthetic peptide of human MAGEL2
Formulation:	pH7.4 PBS, 0.05% NaN ₃ , 40% Glycerol
Concentration:	lot specific
Purification:	Antigen affinity purification
Conjugation:	Unconjugated
Storage:	Store at -20°C as received.
Stability:	Stable for 12 months from date of receipt.
Predicted Protein Size:	59 kDa
Gene Name:	MAGE family member L2
Database Link:	NP_061939 Entrez Gene 54551 Human Q9UJ55
Background:	Prader-Willi syndrome (PWS) is caused by the loss of expression of imprinted genes in chromosome 15q11-q13 region. Affected individuals exhibit neonatal hypotonia, developmental delay, and childhood-onset obesity. Necdin (NDN), a gene involved in the terminal differentiation of neurons, localizes to this region of the genome and has been implicated as one of the genes responsible for the etiology of PWS. This gene is structurally similar to NDN, is also localized to the PWS chromosomal region, and is paternally imprinted, suggesting a possible role for it in PWS.
Synonyms:	NDNL1; nM15; PWLS; SHFYNG


[View online »](#)

Product images:



Gel: 6%SDS-PAGE
 Lysate: 40 µg
 Lane: Jurkat cell lysate
 Primary antibody: TA351379 (MAGEL2 Antibody)
 at dilution 1/550
 Secondary antibody: Goat anti rabbit IgG at
 1/5000 dilution
 Exposure time: 40 seconds