

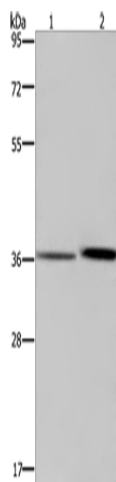
## Product datasheet for TA351377

### MAGEF1 Rabbit Polyclonal Antibody

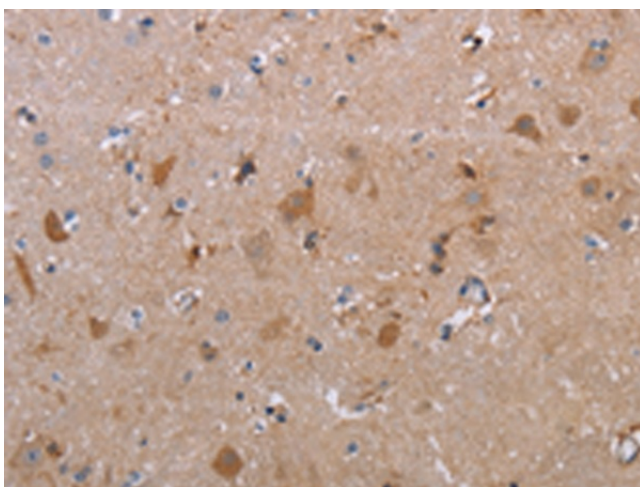
#### Product data:

Product Type:	Primary Antibodies
Applications:	IHC, WB
Recommended Dilution:	WB: 500-2000 WB positive control: A549 cells and human fetal liver tissue IHC: 25-100 Positive control: Human brain Predicted cell location: Cytoplasm and Nucleus
Reactivity:	Human
Host:	Rabbit
Isotype:	IgG
Clonality:	Polyclonal
Immunogen:	Synthetic peptide of human MAGEF1
Formulation:	pH7.4 PBS, 0.05% NaN <sub>3</sub> , 40% Glycerol
Concentration:	lot specific
Purification:	Antigen affinity purification
Conjugation:	Unconjugated
Storage:	Store at -20°C as received.
Stability:	Stable for 12 months from date of receipt.
Predicted Protein Size:	35 kDa
Gene Name:	MAGE family member F1
Database Link:	<a href="#">NP_071432</a> <a href="#">Entrez Gene 64110 Human</a> <a href="#">Q9HAY2</a>
Background:	This intronless gene encodes a member of the MAGE superfamily. It is ubiquitously expressed in normal tissues and in tumor cells. This gene includes a microsatellite repeat in the coding region.
Synonyms:	MGC19617

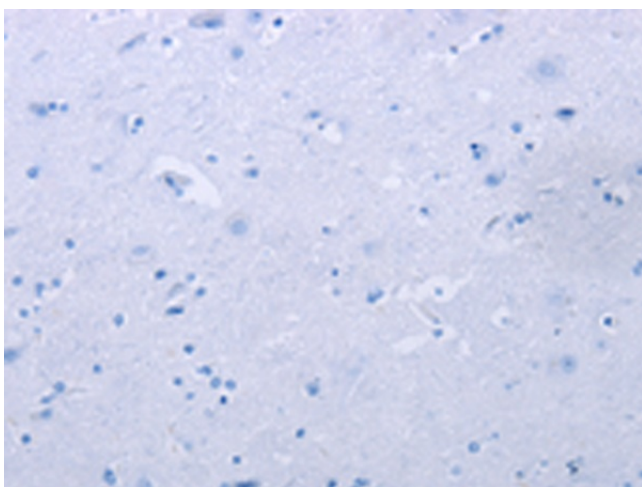

[View online »](#)

**Product images:**


Gel: 8%SDS-PAGE  
 Lysate: 40 µg  
 Lane 1-2: A549 cells  
 human fetal liver tissue  
 Primary antibody: TA351377 (MAGEF1 Antibody)  
 at dilution 1/300  
 Secondary antibody: Goat anti rabbit IgG at  
 1/8000 dilution  
 Exposure time: 1 minute



Immunohistochemistry of paraffin-embedded  
 Human brain tissue using TA351377 (MAGEF1  
 Antibody) at dilution 1/30 (Original magnification:  
 ×200)



Immunohistochemistry of paraffin-embedded Human brain tissue using TA351377 (MAGEF1 Antibody) at dilution 1/30, treated with synthetic peptide. (Original magnification: ×200)