

## Product datasheet for **TA351370S**

### **MAGEA11 Rabbit Polyclonal Antibody**

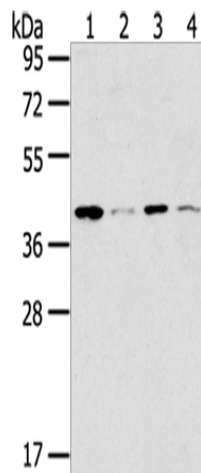
#### **Product data:**

Product Type:	Primary Antibodies
Applications:	IHC, WB
Recommended Dilution:	WB: 500-2000 WB positive control: 293T, K562 and Lovo cells, Human bladder carcinoma tissue IHC: 25-100 Positive control: Human liver cancer Predicted cell location: Cytoplasm
Reactivity:	Human
Host:	Rabbit
Isotype:	IgG
Clonality:	Polyclonal
Immunogen:	Synthetic peptide of human MAGEA11
Formulation:	pH7.4 PBS, 0.05% NaN <sub>3</sub> , 40% Glycerol
Purification:	Antigen affinity purification
Conjugation:	Unconjugated
Storage:	Store at -20°C as received.
Stability:	Stable for 12 months from date of receipt.
Predicted Protein Size:	48 kDa
Gene Name:	MAGE family member A11
Database Link:	<a href="#">NP_005357</a> <a href="#">Entrez Gene 4110 Human P43364</a>
Background:	This gene is a member of the MAGEA gene family. The members of this family encode proteins with 50 to 80% sequence identity to each other. The promoters and first exons of the MAGEA genes show considerable variability, suggesting that the existence of this gene family enables the same function to be expressed under different transcriptional controls.
Synonyms:	CT1.11; MAGE-11; MAGE11; MAGEA-11

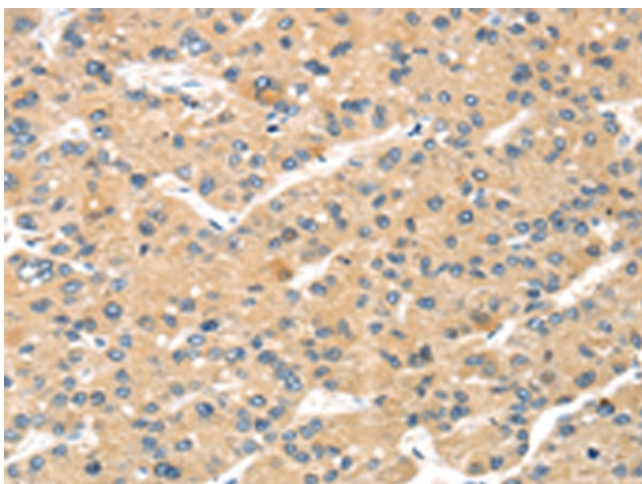


[View online »](#)

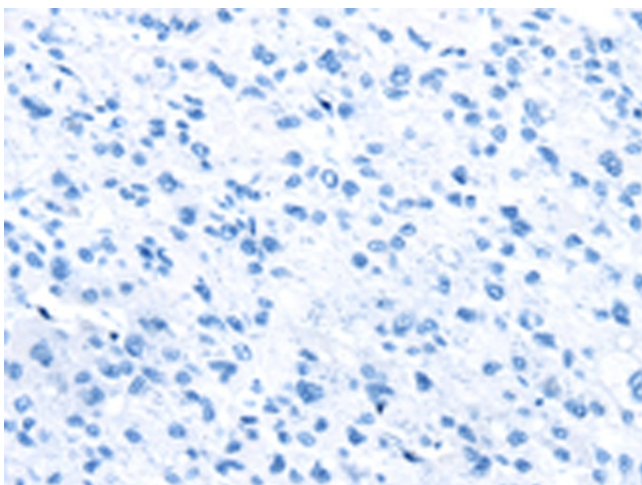
## Product images:



Gel: 8%SDS-PAGE  
Lysate: 40 µg  
Lane 1-4: 293T cells  
K562 cells  
Lovo cells  
Human bladder carcinoma tissue  
Primary antibody: [TA351370] (MAGEA11  
Antibody) at dilution 1/200  
Secondary antibody: Goat anti rabbit IgG at  
1/8000 dilution  
Exposure time: 30 seconds



Immunohistochemistry of paraffin-embedded  
Human liver cancer tissue using [TA351370]  
(MAGEA11 Antibody) at dilution 1/20 (Original  
magnification: ×200)



Immunohistochemistry of paraffin-embedded  
Human liver cancer tissue using [TA351370]  
(MAGEA11 Antibody) at dilution 1/20, treated with  
synthetic peptide. (Original magnification: ×200)