

Product datasheet for **TA351369**

MAG1 (GPAT3) Rabbit Polyclonal Antibody

Product data:

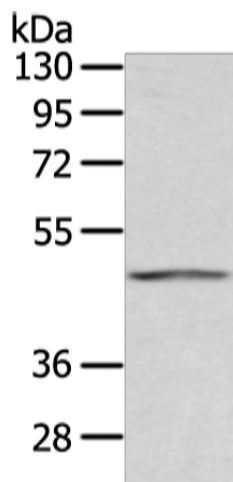
Product Type:	Primary Antibodies
Applications:	IHC, WB
Recommended Dilution:	WB: 200-1000 WB positive control: Humna placenta tissue IHC: 25-100 Positive control: Human thyroid cancer Predicted cell location: Cytoplasm and Nucleus
Reactivity:	Human, Mouse
Host:	Rabbit
Isotype:	IgG
Clonality:	Polyclonal
Immunogen:	Synthetic peptide of human AGPAT9
Formulation:	pH7.4 PBS, 0.05% NaN ₃ , 40% GlycerolIn
Concentration:	lot specific
Purification:	Antigen affinity purification
Conjugation:	Unconjugated
Storage:	Store at -20°C as received.
Stability:	Stable for 12 months from date of receipt.
Predicted Protein Size:	49 kDa
Gene Name:	glycerol-3-phosphate acyltransferase 3
Database Link:	NP_116106 Entrez Gene 231510 Mouse Entrez Gene 84803 Human Q53EU6
Background:	This gene encodes a member of the lysophosphatidic acid acyltransferase protein family. The encoded protein is an enzyme which catalyzes the conversion of glycerol-3-phosphate to lysophosphatidic acid in the synthesis of triacylglycerol. Multiple alternatively spliced variants, encoding the same protein, have been identified.
Synonyms:	AGPAT8; AGPAT9; AGPAT 10; AGPAT10; HMFN0839; LPAAT-theta; MAG1



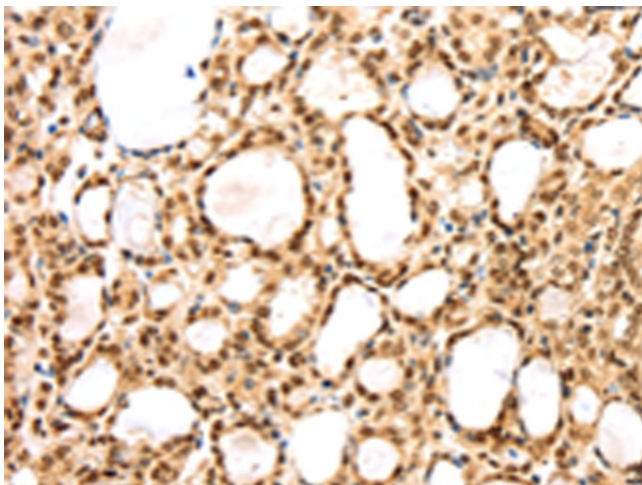
[View online »](#)

Protein Families: Transmembrane

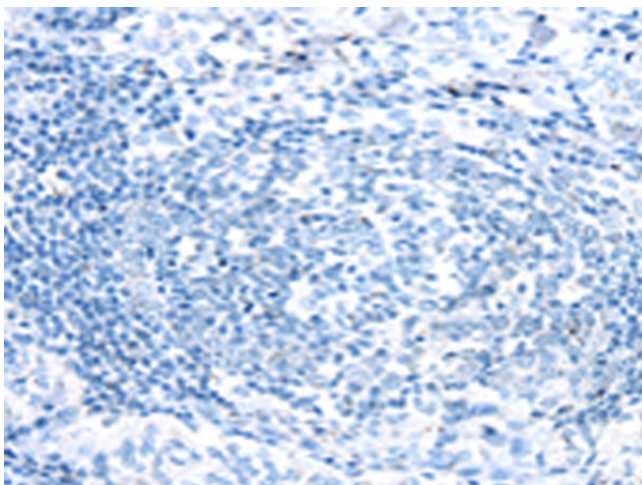
Product images:



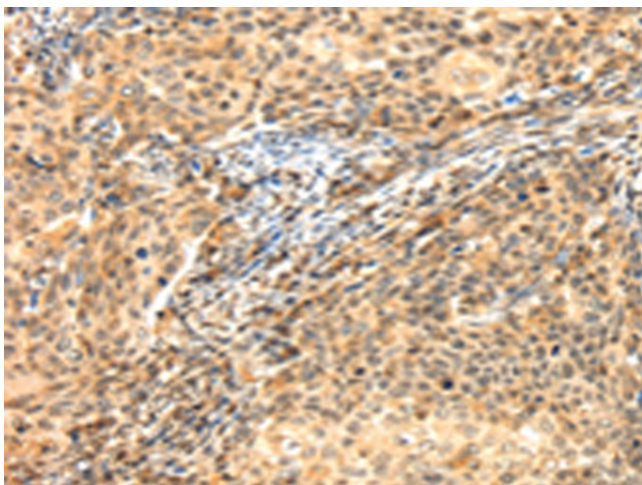
Gel: 8%SDS-PAGE
Lysate: 80 μ g
Lane: Human placenta tissue
Primary antibody: TA351369 (GPAT3 Antibody) at dilution 1/200
Secondary antibody: Goat anti rabbit IgG at 1/8000 dilution
Exposure time: 15 seconds



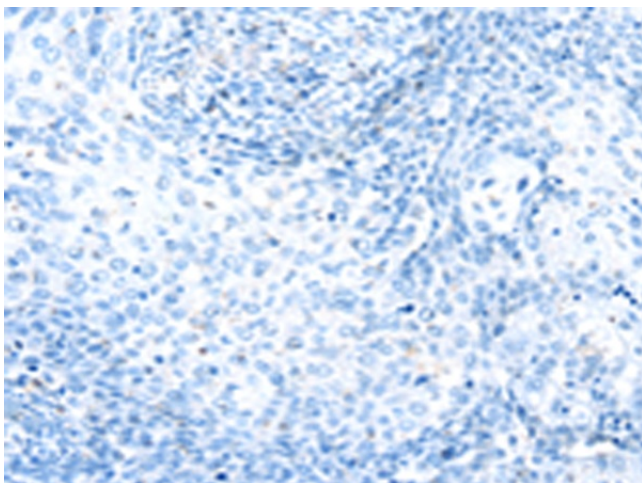
Immunohistochemistry of paraffin-embedded Human thyroid cancer tissue using TA351369 (GPAT3 Antibody) at dilution 1/25 (Original magnification: \times 200)



Immunohistochemistry of paraffin-embedded Human thyroid cancer tissue using TA351369 (GPAT3 Antibody) at dilution 1/25, treated with synthetic peptide. (Original magnification: $\times 200$)



Immunohistochemistry of paraffin-embedded Human cervical cancer tissue using TA351369 (GPAT3 Antibody) at dilution 1/25 (Original magnification: $\times 200$)



Immunohistochemistry of paraffin-embedded Human cervical cancer tissue using TA351369 (GPAT3 Antibody) at dilution 1/25, treated with synthetic peptide. (Original magnification: $\times 200$)