

## Product datasheet for **TA351366S**

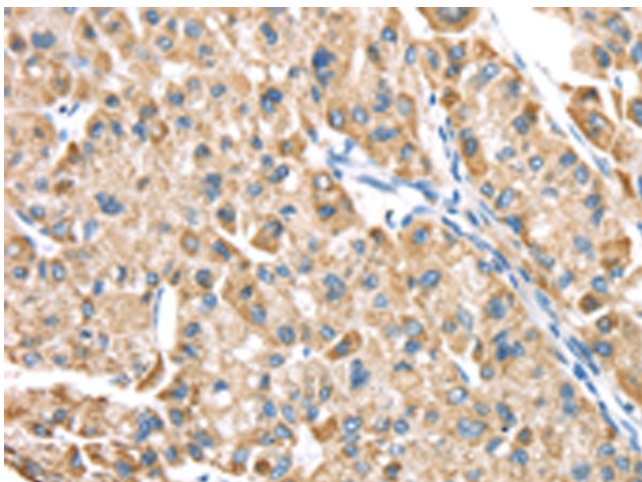
### Leukotriene B4 Receptor 2 (LTB4R2) Rabbit Polyclonal Antibody

#### Product data:

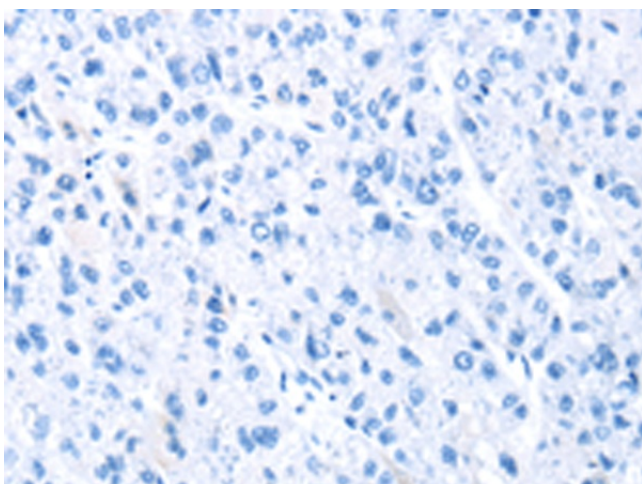
Product Type:	Primary Antibodies
Applications:	IHC
Recommended Dilution:	IHC: 20-100 Positive control: Human liver cancer Predicted cell location: Cytoplasm
Reactivity:	Human
Host:	Rabbit
Isotype:	IgG
Clonality:	Polyclonal
Immunogen:	Synthetic peptide of human LTB4R2
Formulation:	pH7.4 PBS, 0.05% NaN <sub>3</sub> , 40% Glycerol
Purification:	Antigen affinity purification
Conjugation:	Unconjugated
Storage:	Store at -20°C as received.
Stability:	Stable for 12 months from date of receipt.
Gene Name:	leukotriene B4 receptor 2
Database Link:	<a href="#">NP_062813</a> <a href="#">Entrez Gene 56413 Human</a> <a href="#">Q9NPC1</a>
Background:	Low-affinity receptor for leukotrienes including leukotriene B4. Mediates chemotaxis of granulocytes and macrophages. The response is mediated via G-proteins that activate a phosphatidylinositol-calcium second messenger system. The rank order of affinities for the leukotrienes is LTB <sub>4</sub> > 12-epi-LTB <sub>4</sub> > LTB <sub>5</sub> > LTB <sub>3</sub> .
Synonyms:	BLT2; BLTR2; JULF2; KPG_004; LTB4-R 2; LTB4-R2; NOP9
Protein Families:	Druggable Genome, GPCR, Transmembrane
Protein Pathways:	Calcium signaling pathway, Neuroactive ligand-receptor interaction



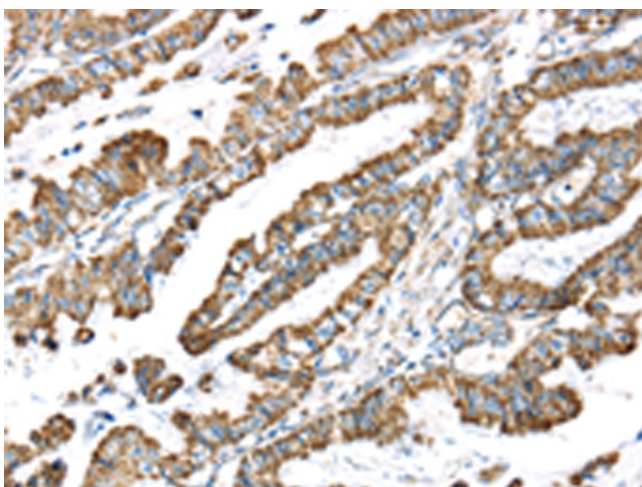
[View online »](#)

**Product images:**

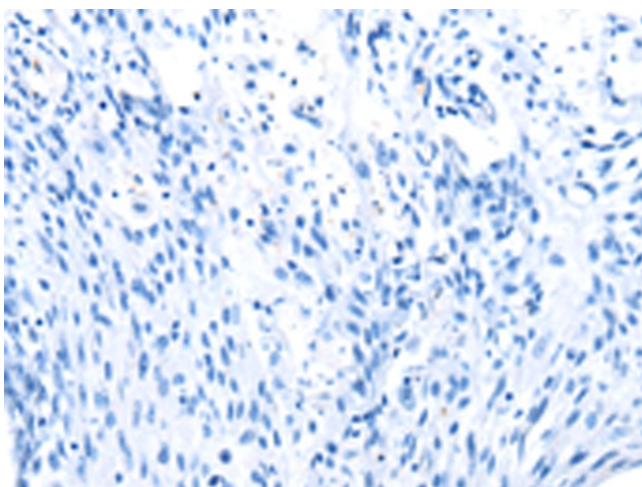
Immunohistochemistry of paraffin-embedded Human liver cancer tissue using [TA351366] (LTB4R2 Antibody) at dilution 1/20 (Original magnification: ×200)



Immunohistochemistry of paraffin-embedded Human liver cancer tissue using [TA351366] (LTB4R2 Antibody) at dilution 1/20, treated with synthetic peptide. (Original magnification: ×200)



Immunohistochemistry of paraffin-embedded Human esophagus cancer tissue using [TA351366] (LTB4R2 Antibody) at dilution 1/20 (Original magnification:  $\times 200$ )



Immunohistochemistry of paraffin-embedded Human esophagus cancer tissue using [TA351366] (LTB4R2 Antibody) at dilution 1/20, treated with synthetic peptide. (Original magnification:  $\times 200$ )