

## Product datasheet for **TA351365S**

### Leukotriene B4 Receptor 2 (LTB4R2) Rabbit Polyclonal Antibody

#### Product data:

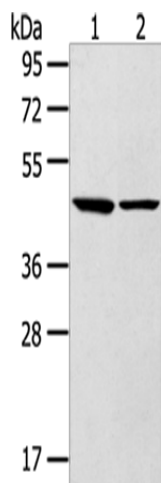
Product Type:	Primary Antibodies
Applications:	WB
Recommended Dilution:	WB: 500-2000 WB positive control: Mouse brain and liver tissue
Reactivity:	Human, Mouse
Host:	Rabbit
Isotype:	IgG
Clonality:	Polyclonal
Immunogen:	Synthetic peptide of human LTB4R2
Formulation:	pH7.4 PBS, 0.05% NaN <sub>3</sub> , 40% Glycerol
Purification:	Antigen affinity purification
Conjugation:	Unconjugated
Storage:	Store at -20°C as received.
Stability:	Stable for 12 months from date of receipt.
Predicted Protein Size:	42 kDa
Gene Name:	leukotriene B4 receptor 2
Database Link:	<a href="#">NP_062813</a> <a href="#">Entrez Gene 56413 Human</a> <a href="#">Q9NPC1</a>
Background:	Leukotriene B4 receptor 1 (LTB4R1), also designated P2Y purinoceptor 7, is a receptor for extracellular ATP, UTP and ADP. Through modulation of L-type calcium currents, LTB4-R1 is involved in the regulation of cardiac muscle contraction. It is also a receptor for leukotriene B4 (LTB4), a potent chemoattractant involved in inflammation and immune response. Leukotriene B4 receptor 2 (LTB4R2) is a ubiquitously expressed 358-amino acid receptor for LTB4.
Synonyms:	BLT2; BLTR2; JULF2; KPG_004; LTB4-R 2; LTB4-R2; NOP9
Protein Families:	Druggable Genome, GPCR, Transmembrane



[View online »](#)

Protein Pathways: Calcium signaling pathway, Neuroactive ligand-receptor interaction

**Product images:**



Gel: 8%SDS-PAGE

Lysate: 40 µg

Lane 1-2: Mouse brain tissue

Mouse liver tissue

Primary antibody: [TA351365] (LTB4R2 Antibody)  
at dilution 1/250

Secondary antibody: Goat anti rabbit IgG at  
1/8000 dilution

Exposure time: 10 seconds