

Product datasheet for **TA351358S**

PSMB8 Rabbit Polyclonal Antibody

Product data:

| | |
|-------------------------|--|
| Product Type: | Primary Antibodies |
| Applications: | IHC, WB |
| Recommended Dilution: | WB: 200-1000 WB positive control: 231 and A431 cells, Mouse liver and Human placenta tissue, Jurkat and Raji cells IHC: 25-100 Positive control: Human liver cancer Predicted cell location: Cytoplasm and Nucleus |
| Reactivity: | Human, Mouse |
| Host: | Rabbit |
| Isotype: | IgG |
| Clonality: | Polyclonal |
| Immunogen: | Synthetic peptide of human PSMB8 |
| Formulation: | pH7.4 PBS, 0.05% NaN ₃ , 40% Glycerol |
| Purification: | Antigen affinity purification |
| Conjugation: | Unconjugated |
| Storage: | Store at -20°C as received. |
| Stability: | Stable for 12 months from date of receipt. |
| Predicted Protein Size: | 30 kDa |
| Gene Name: | proteasome subunit beta 8 |
| Database Link: | NP_683720 Entrez Gene 16913 Mouse Entrez Gene 5696 Human P28062 |

Background: The proteasome is a multicatalytic proteinase complex with a highly ordered ring-shaped 20S core structure. The core structure is composed of 4 rings of 28 non-identical subunits; 2 rings are composed of 7 alpha subunits and 2 rings are composed of 7 beta subunits. Proteasomes are distributed throughout eukaryotic cells at a high concentration and cleave peptides in an ATP/ubiquitin-dependent process in a non-lysosomal pathway.



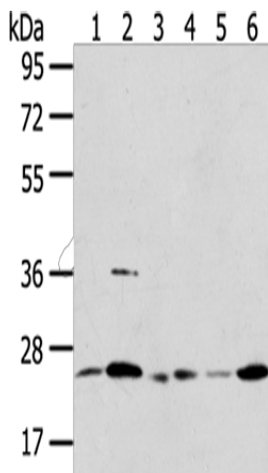
[View online »](#)

Synonyms: ALDD; D6S216; D6S216E; JMP; LMP7; NKJO; PSMB5i; RING10

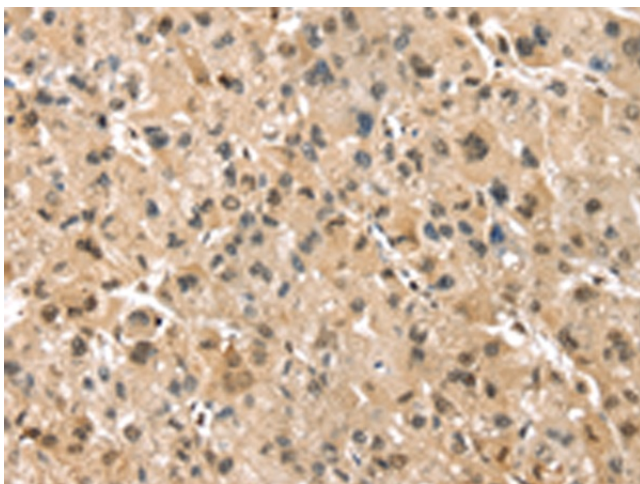
Protein Families: Druggable Genome, Protease

Protein Pathways: Proteasome

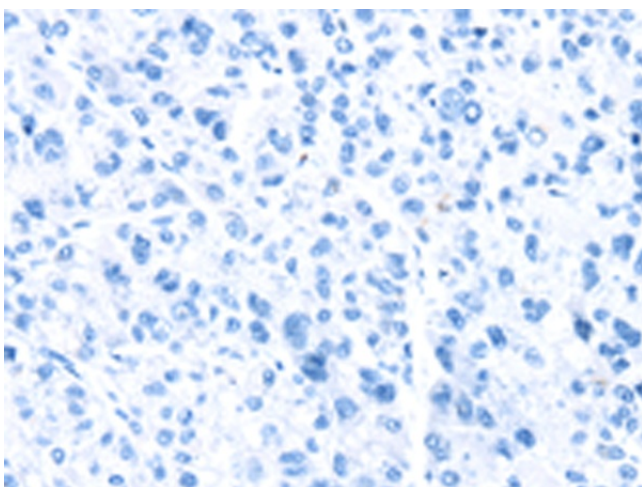
Product images:



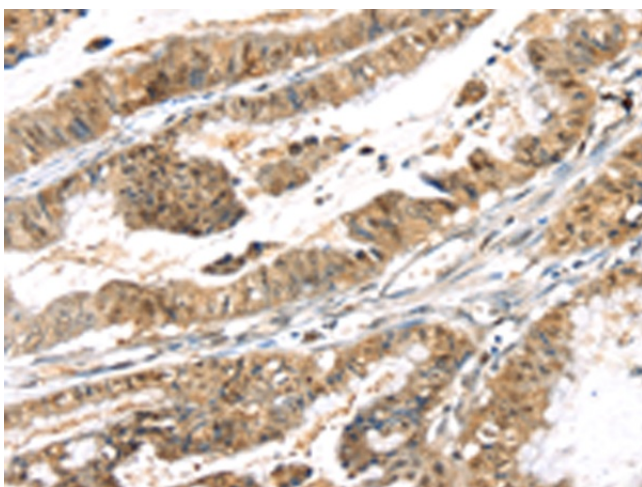
Gel: 8%SDS-PAGE
 Lysate: 40 µg
 Lane 1-6: 231 cells
 A431 cells
 Mouse liver tissue
 Human placenta tissue
 Jurkat cells
 Raji cells
 Primary antibody: [TA351358] (PSMB8 Antibody) at dilution 1/350
 Secondary antibody: Goat anti rabbit IgG at 1/8000 dilution
 Exposure time: 10 seconds



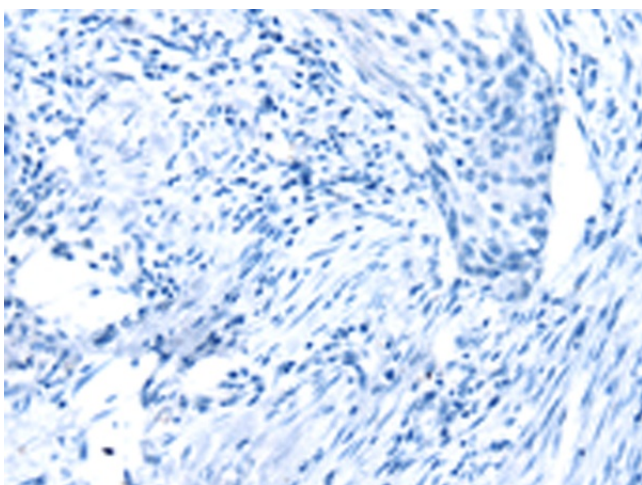
Immunohistochemistry of paraffin-embedded Human liver cancer tissue using [TA351358] (PSMB8 Antibody) at dilution 1/30 (Original magnification: ×200)



Immunohistochemistry of paraffin-embedded Human liver cancer tissue using [TA351358] (PSMB8 Antibody) at dilution 1/30, treated with synthetic peptide. (Original magnification: ×200)



Immunohistochemistry of paraffin-embedded Human esophagus cancer tissue using [TA351358] (PSMB8 Antibody) at dilution 1/30 (Original magnification: ×200)



Immunohistochemistry of paraffin-embedded Human esophagus cancer tissue using [TA351358] (PSMB8 Antibody) at dilution 1/30, treated with synthetic peptide. (Original magnification: ×200)