

## Product datasheet for **TA351358**

### PSMB8 Rabbit Polyclonal Antibody

#### Product data:

Product Type:	Primary Antibodies
Applications:	IHC, WB
Recommended Dilution:	WB: 200-1000 WB positive control: 231 and A431 cells, Mouse liver and Human placenta tissue, Jurkat and Raji cells IHC: 25-100 Positive control: Human liver cancer Predicted cell location: Cytoplasm and Nucleus
Reactivity:	Human, Mouse
Host:	Rabbit
Isotype:	IgG
Clonality:	Polyclonal
Immunogen:	Synthetic peptide of human PSMB8
Formulation:	pH7.4 PBS, 0.05% NaN <sub>3</sub> , 40% Glycerol
Concentration:	lot specific
Purification:	Antigen affinity purification
Conjugation:	Unconjugated
Storage:	Store at -20°C as received.
Stability:	Stable for 12 months from date of receipt.
Predicted Protein Size:	30 kDa
Gene Name:	proteasome subunit beta 8
Database Link:	<a href="#">NP_683720</a> <a href="#">Entrez Gene 16913 Mouse</a> <a href="#">Entrez Gene 5696 Human</a> <a href="#">P28062</a>



[View online »](#)

**Background:**

The proteasome is a multicatalytic proteinase complex with a highly ordered ring-shaped 20S core structure. The core structure is composed of 4 rings of 28 non-identical subunits; 2 rings are composed of 7 alpha subunits and 2 rings are composed of 7 beta subunits. Proteasomes are distributed throughout eukaryotic cells at a high concentration and cleave peptides in an ATP/ubiquitin-dependent process in a non-lysosomal pathway.

**Synonyms:**

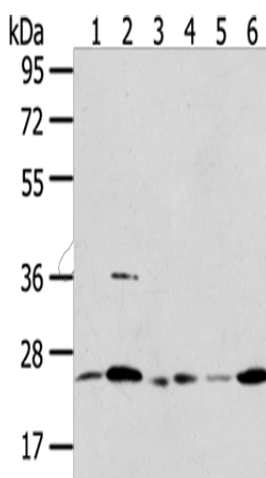
ALDD; D6S216; D6S216E; JMP; LMP7; NKJO; PSMB5i; RING10

**Protein Families:**

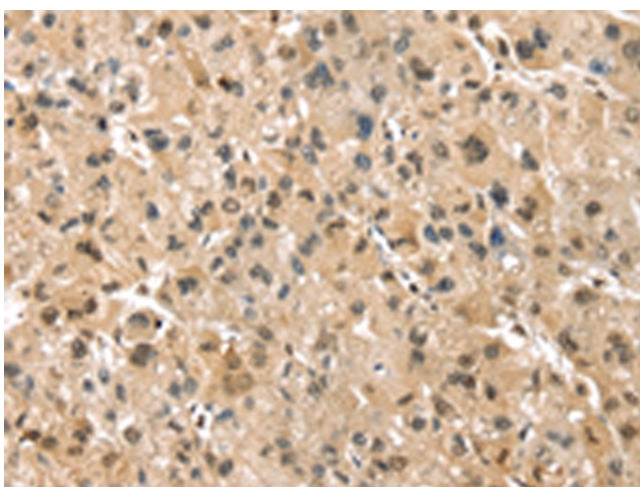
Druggable Genome, Protease

**Protein Pathways:**

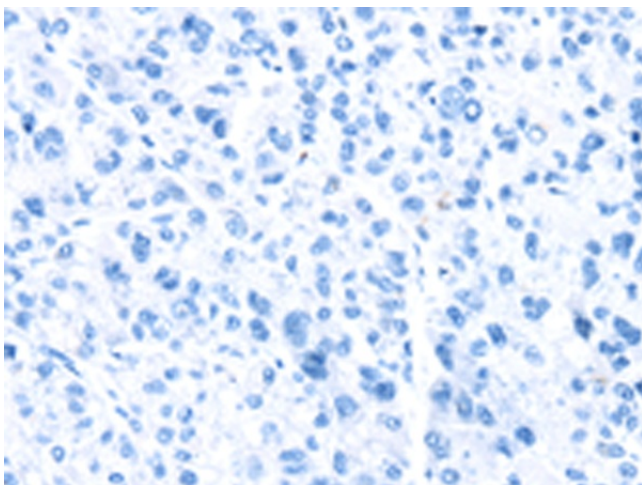
Proteasome

**Product images:**


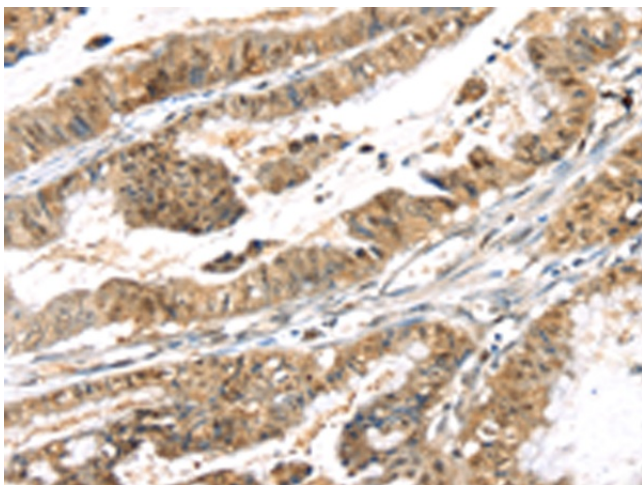
Gel: 8%SDS-PAGE  
 Lysate: 40  $\mu$ g  
 Lane 1-6: 231 cells  
 A431 cells  
 Mouse liver tissue  
 Human placenta tissue  
 Jurkat cells  
 Raji cells  
 Primary antibody: TA351358 (PSMB8 Antibody) at dilution 1/350  
 Secondary antibody: Goat anti rabbit IgG at 1/8000 dilution  
 Exposure time: 10 seconds



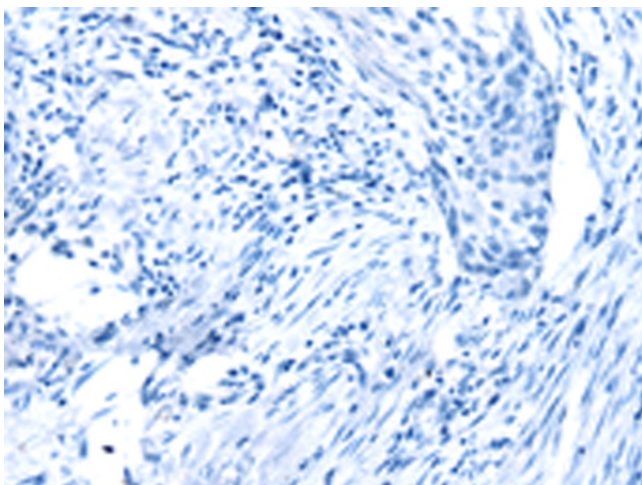
Immunohistochemistry of paraffin-embedded Human liver cancer tissue using TA351358 (PSMB8 Antibody) at dilution 1/30 (Original magnification:  $\times$ 200)



Immunohistochemistry of paraffin-embedded Human liver cancer tissue using TA351358 (PSMB8 Antibody) at dilution 1/30, treated with synthetic peptide. (Original magnification: x200)



Immunohistochemistry of paraffin-embedded Human esophagus cancer tissue using TA351358 (PSMB8 Antibody) at dilution 1/30 (Original magnification: x200)



Immunohistochemistry of paraffin-embedded Human esophagus cancer tissue using TA351358 (PSMB8 Antibody) at dilution 1/30, treated with synthetic peptide. (Original magnification: x200)