

Product datasheet for **TA351357**

LLGL2 Rabbit Polyclonal Antibody

Product data:

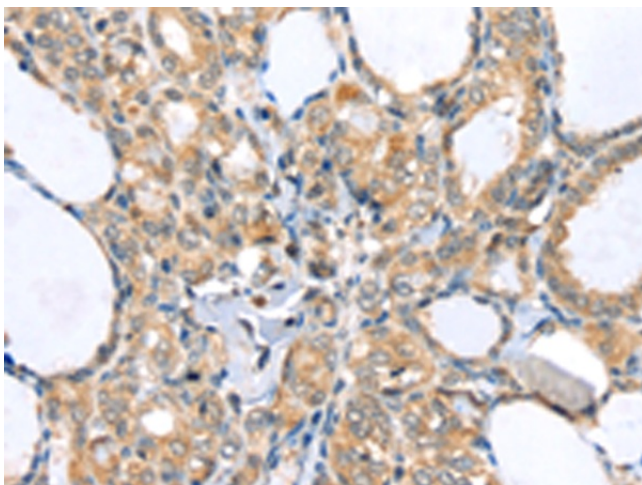
Product Type:	Primary Antibodies
Applications:	IHC
Recommended Dilution:	IHC: 25-100 Positive control: Human thyroid cancer Predicted cell location: Cytoplasm
Reactivity:	Human, Mouse
Host:	Rabbit
Isotype:	IgG
Clonality:	Polyclonal
Immunogen:	Synthetic peptide of human LLGL2
Formulation:	pH7.4 PBS, 0.05% NaN ₃ , 40% Glycerol
Concentration:	lot specific
Purification:	Antigen affinity purification
Conjugation:	Unconjugated
Storage:	Store at -20°C as received.
Stability:	Stable for 12 months from date of receipt.
Gene Name:	LLGL2, scribble cell polarity complex component
Database Link:	NP_004515 Entrez Gene 3993 Human Q6P1M3
Background:	The lethal (2) giant larvae protein of Drosophila plays a role in asymmetric cell division, epithelial cell polarity, and cell migration. This human gene encodes a protein similar to lethal (2) giant larvae of Drosophila. In fly, the protein's ability to localize cell fate determinants is regulated by the atypical protein kinase C (aPKC). In human, this protein interacts with aPKC-containing complexes and is cortically localized in mitotic cells. Alternative splicing results in multiple transcript variants encoding different isoforms.
Synonyms:	HGL; Hgl-2; LGL2
Protein Families:	Druggable Genome



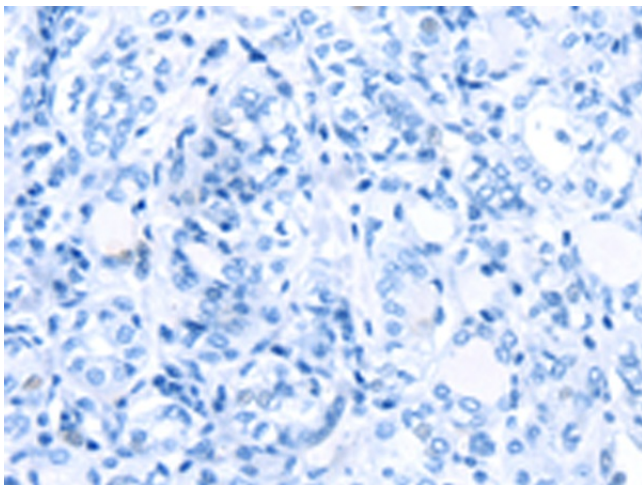
[View online »](#)

Protein Pathways: Tight junction

Product images:



Immunohistochemistry of paraffin-embedded Human thyroid cancer tissue using TA351357 (LLGL2 Antibody) at dilution 1/35 (Original magnification: $\times 200$)



Immunohistochemistry of paraffin-embedded Human thyroid cancer tissue using TA351357 (LLGL2 Antibody) at dilution 1/35, treated with synthetic peptide. (Original magnification: $\times 200$)