

Product datasheet for **TA351356S**

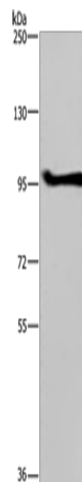
LLGL1 Rabbit Polyclonal Antibody

Product data:

Product Type:	Primary Antibodies
Applications:	WB
Recommended Dilution:	WB: 500-2000 WB positive control: A549 cells
Reactivity:	Human
Host:	Rabbit
Isotype:	IgG
Clonality:	Polyclonal
Immunogen:	Synthetic peptide of human LLGL1
Formulation:	pH7.4 PBS, 0.05% NaN ₃ , 40% Glycerol
Purification:	Antigen affinity purification
Conjugation:	Unconjugated
Storage:	Store at -20°C as received.
Stability:	Stable for 12 months from date of receipt.
Predicted Protein Size:	115 kDa
Gene Name:	LLGL1, scribble cell polarity complex component
Database Link:	NP_004131 Entrez Gene 3996 Human Q15334
Background:	This gene encodes a protein that is similar to a tumor suppressor in Drosophila. The protein is part of a cytoskeletal network and is associated with nonmuscle myosin II heavy chain and a kinase that specifically phosphorylates this protein at serine residues. The gene is located within the Smith-Magenis syndrome region on chromosome 17.
Synonyms:	DLG4; HUGL; HUGL-1; HUGL1; LLGL
Protein Families:	Druggable Genome
Protein Pathways:	Tight junction



[View online »](#)

Product images:

Gel: 6%SDS-PAGE
Lysate: 40 µg
Lane: A549 cells
Primary antibody: [TA351356] (LLGL1 Antibody) at dilution 1/350
Secondary antibody: Goat anti rabbit IgG at 1/8000 dilution
Exposure time: 20 seconds