

## Product datasheet for **TA351348S**

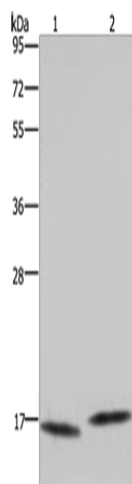
### LC3C (MAP1LC3C) Rabbit Polyclonal Antibody

#### Product data:

Product Type:	Primary Antibodies
Applications:	WB
Recommended Dilution:	WB: 200-1000 WB positive control: 823 and Raji cells
Reactivity:	Human
Host:	Rabbit
Isotype:	IgG
Clonality:	Polyclonal
Immunogen:	Synthetic peptide of human MAP1LC3C
Formulation:	pH7.4 PBS, 0.05% NaN <sub>3</sub> , 40% Glycerol
Purification:	Antigen affinity purification
Conjugation:	Unconjugated
Storage:	Store at -20°C as received.
Stability:	Stable for 12 months from date of receipt.
Predicted Protein Size:	17 kDa
Gene Name:	microtubule associated protein 1 light chain 3 gamma
Database Link:	<a href="#">NP_001004343</a> <a href="#">Entrez Gene 440738 Human</a> <a href="#">Q9BXW4</a>
Background:	Autophagy is a highly regulated bulk degradation process that plays an important role in cellular maintenance and development. MAP1LC3C is an ortholog of the yeast autophagosome protein Atg8
Synonyms:	ATG8J; LC3C



[View online »](#)

**Product images:**

Gel: 10%SDS-PAGE

Lysate: 40  $\mu$ g

Lane 1-2: 823 cells

Raji cells

Primary antibody: [TA351348] (MAP1LC3C Antibody) at dilution 1/450

Secondary antibody: Goat anti rabbit IgG at 1/8000 dilution

Exposure time: 2 minutes