

## Product datasheet for **TA351345**

### LASS6 (CERS6) Rabbit Polyclonal Antibody

#### Product data:

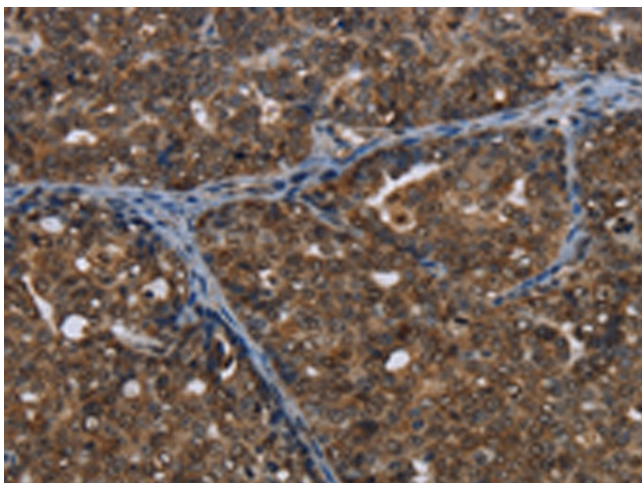
Product Type:	Primary Antibodies
Applications:	IHC
Recommended Dilution:	IHC: 50-200 Positive control: Human ovarian cancer Predicted cell location: Nucleus
Reactivity:	Human, Mouse
Host:	Rabbit
Isotype:	IgG
Clonality:	Polyclonal
Immunogen:	Synthetic peptide of human CERS6
Formulation:	pH7.4 PBS, 0.05% NaN <sub>3</sub> , 40% Glycerol
Concentration:	lot specific
Purification:	Antigen affinity purification
Conjugation:	Unconjugated
Storage:	Store at -20°C as received.
Stability:	Stable for 12 months from date of receipt.
Gene Name:	ceramide synthase 6
Database Link:	<a href="#">NP_001243055</a> <a href="#">Entrez Gene 241447 Mouse</a> <a href="#">Entrez Gene 253782 Human</a> <a href="#">Q6ZMG9</a>
Background:	The LASS (longevity assurance homolog) family members are highly conserved from yeasts to mammals. Six members of this family of proteins have been characterized (LASS1, LASS2, LASS3, LASS4, LASS5 and LASS6) and they all are involved in sphingolipid synthesis. LASS6 is a widely expressed 384 amino acid endoplasmic reticulum, multi-pass membrane protein. On the luminal side of the endoplasmic reticulum membrane, the N-terminal asparagine residue is glycosylated. In cells deficient for CLN9, LASS6 corrects growth and apoptosis, and increases the levels of short ceramide species, such as C14:0- and C16:0-ceramides.
Synonyms:	CERS5; LASS6



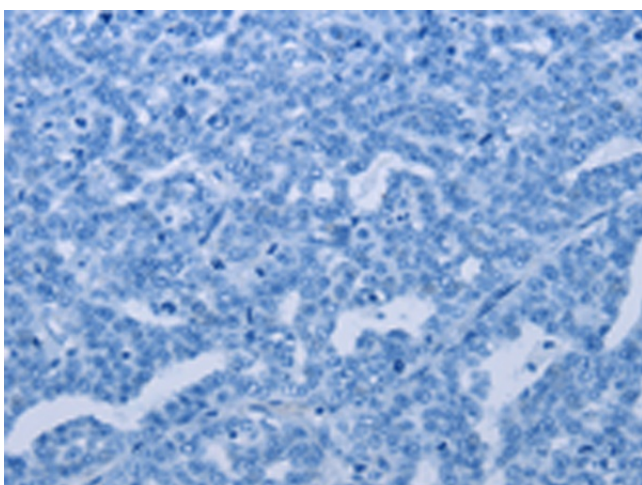
[View online »](#)

Protein Families: Druggable Genome, Transmembrane

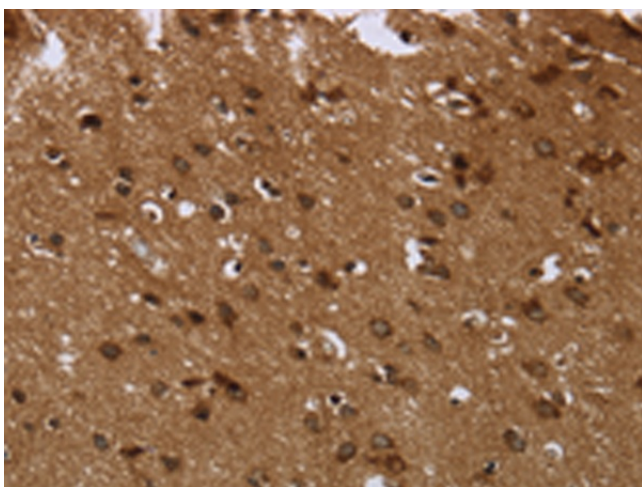
### Product images:



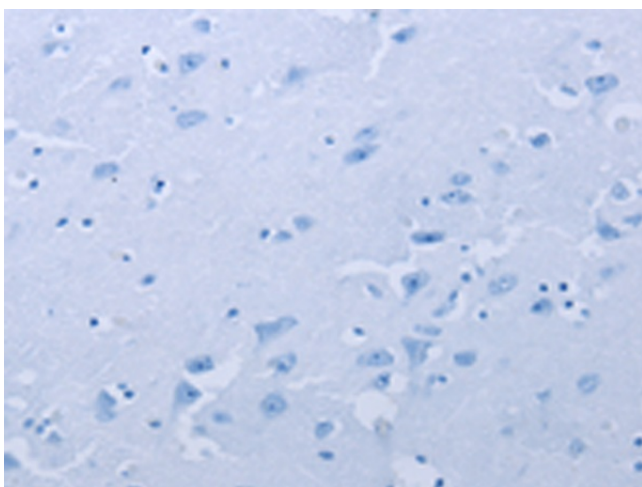
Immunohistochemistry of paraffin-embedded Human ovarian cancer tissue using TA351345 (CERS6 Antibody) at dilution 1/35 (Original magnification:  $\times 200$ )



Immunohistochemistry of paraffin-embedded Human ovarian cancer tissue using TA351345 (CERS6 Antibody) at dilution 1/35, treated with synthetic peptide. (Original magnification:  $\times 200$ )



Immunohistochemistry of paraffin-embedded Human brain tissue using TA351345 (CERS6 Antibody) at dilution 1/35 (Original magnification: ×200)



Immunohistochemistry of paraffin-embedded Human brain tissue using TA351345 (CERS6 Antibody) at dilution 1/35, treated with synthetic peptide. (Original magnification: ×200)