

## Product datasheet for **TA351344**

### Lass5 (CERS5) Rabbit Polyclonal Antibody

#### Product data:

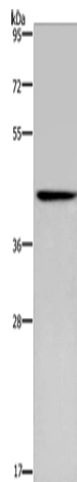
Product Type:	Primary Antibodies
Applications:	IHC, WB
Recommended Dilution:	WB: 200-1000 WB positive control: Human fetal brain tissue IHC: 50-200 Positive control: Human colon cancer Predicted cell location: Cytoplasm or Nucleus
Reactivity:	Human, Mouse
Host:	Rabbit
Isotype:	IgG
Clonality:	Polyclonal
Immunogen:	Synthetic peptide of human CERS5
Formulation:	pH7.4 PBS, 0.05% NaN <sub>3</sub> , 40% Glycerol
Concentration:	lot specific
Purification:	Antigen affinity purification
Conjugation:	Unconjugated
Storage:	Store at -20°C as received.
Stability:	Stable for 12 months from date of receipt.
Predicted Protein Size:	46 kDa
Gene Name:	ceramide synthase 5
Database Link:	<a href="#">NP_001268660</a> <a href="#">Entrez Gene 71949 Mouse</a> <a href="#">Entrez Gene 91012 Human</a> <a href="#">Q8N5B7</a>
Background:	This gene encodes a protein that belongs to the TLC (TRAM, LAG1 and CLN8 homology domains) family of proteins. The encoded protein functions in the synthesis of ceramide, a lipid molecule that is involved in a several cellular signaling pathways. Alternate splicing results in multiple transcript variants.
Synonyms:	LASS5; Trh4



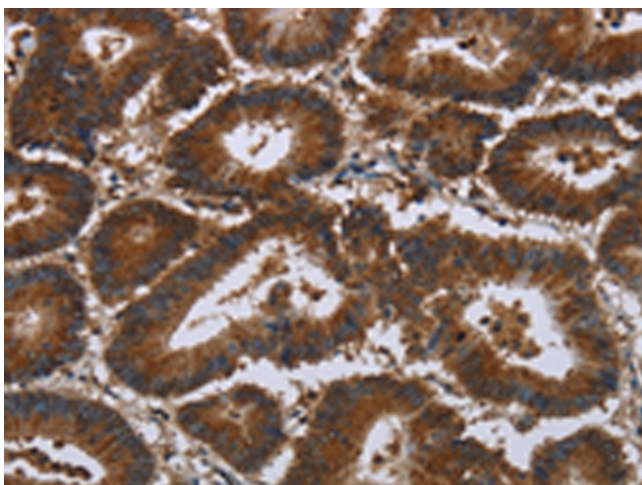
[View online »](#)

Protein Families: Transcription Factors, Transmembrane

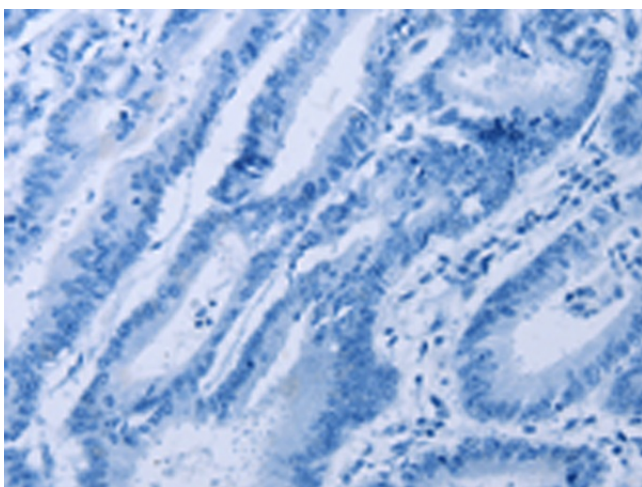
### Product images:



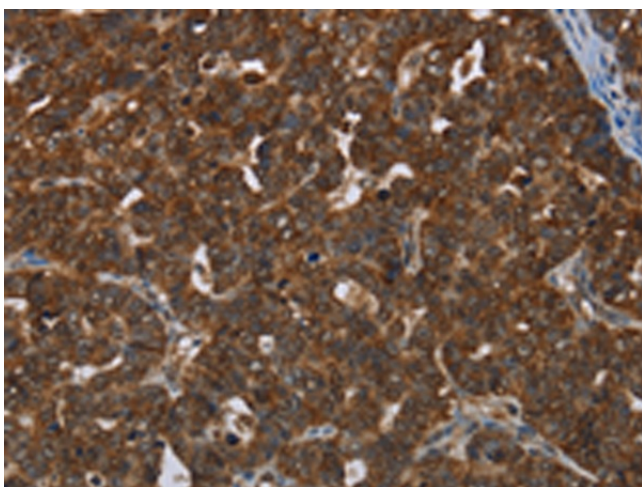
Gel: 8%SDS-PAGE  
Lysate: 40 µg  
Lane: Human fetal brain tissue  
Primary antibody: TA351344 (CERS5 Antibody) at dilution 1/350  
Secondary antibody: Goat anti rabbit IgG at 1/8000 dilution  
Exposure time: 5 minutes



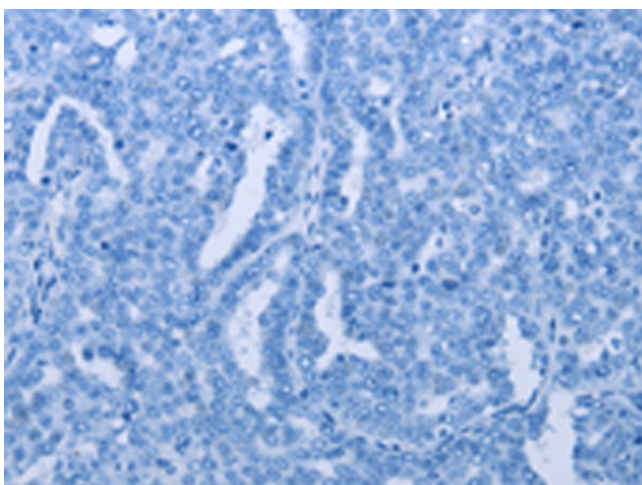
Immunohistochemistry of paraffin-embedded Human colon cancer tissue using TA351344 (CERS5 Antibody) at dilution 1/35 (Original magnification: ×200)



Immunohistochemistry of paraffin-embedded Human colon cancer tissue using TA351344 (CERS5 Antibody) at dilution 1/35, treated with synthetic peptide. (Original magnification: ×200)



Immunohistochemistry of paraffin-embedded Human cervical cancer tissue using TA351344 (CERS5 Antibody) at dilution 1/35 (Original magnification: ×200)



Immunohistochemistry of paraffin-embedded Human cervical cancer tissue using TA351344 (CERS5 Antibody) at dilution 1/35, treated with synthetic peptide. (Original magnification: ×200)