

Product datasheet for **TA351343S**

LASS4 (CERS4) Rabbit Polyclonal Antibody

Product data:

Product Type:	Primary Antibodies
Applications:	IHC, WB
Recommended Dilution:	WB: 500-2000 WB positive control: Human fetal liver tissue, HT-29 and HUVEC cells, MCF-7 cells and human hepatocellular carcinoma tissue IHC: 50-200 Positive control: Human ovarian cancer Predicted cell location: Cytoplasm
Reactivity:	Human
Host:	Rabbit
Isotype:	IgG
Clonality:	Polyclonal
Immunogen:	Synthetic peptide of human CERS4
Formulation:	pH7.4 PBS, 0.05% NaN ₃ , 40% Glycerol
Purification:	Antigen affinity purification
Conjugation:	Unconjugated
Storage:	Store at -20°C as received.
Stability:	Stable for 12 months from date of receipt.
Predicted Protein Size:	46 kDa
Gene Name:	ceramide synthase 4
Database Link:	NP_078828 Entrez Gene 79603 Human Q9HA82



[View online »](#)

Background:

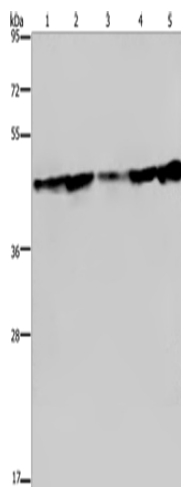
The LASS (longevity assurance homolog) family members are highly conserved from yeasts to mammals. Six members of this family of proteins have been characterized (LASS1, LASS2, LASS3, LASS4, LASS5 and LASS6) and they are all involved in sphingolipid synthesis. LASS4 is a 394 amino acid endoplasmic reticulum, multi-pass membrane protein. LASS4 increases the levels of long ceramides such as C22:0- and C24:0-ceramides. In cells deficient for CLN9, as observed in neuronal ceroid lipofuscinosis (NCL) or Batten disease, LASS4 can increase ceramide levels and partially correct growth and apoptosis.

Synonyms:

LASS4; Trh1

Protein Families:

Transcription Factors, Transmembrane

Product images:


Gel: 8%SDS-PAGE

Lysate: 40 µg

Lane 1-5: Human fetal liver tissue

HT29 cells

HUVEC cells

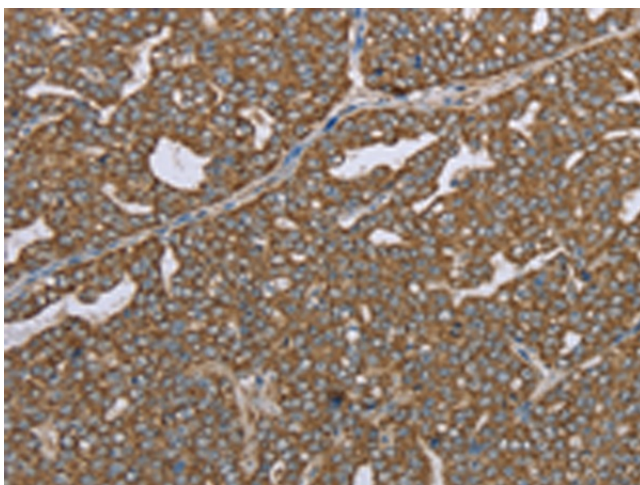
MCF7 cells

human hepatocellular carcinoma tissue

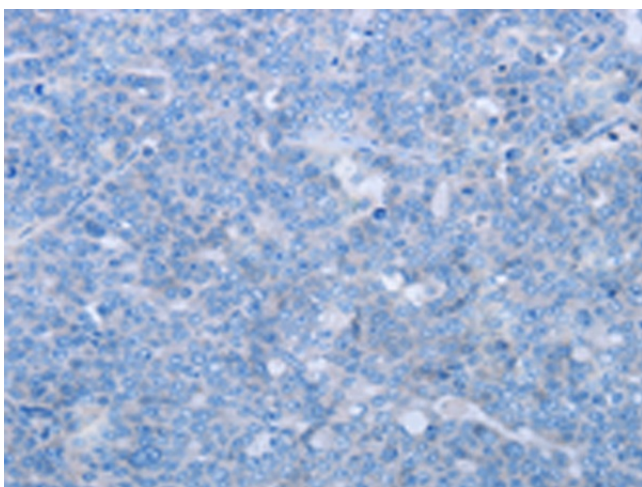
Primary antibody: [TA351343] (CERS4 Antibody) at dilution 1/300

Secondary antibody: Goat anti rabbit IgG at 1/8000 dilution

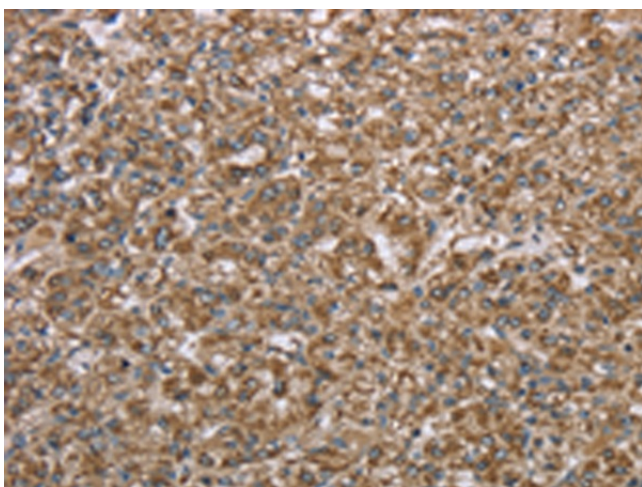
Exposure time: 10 seconds



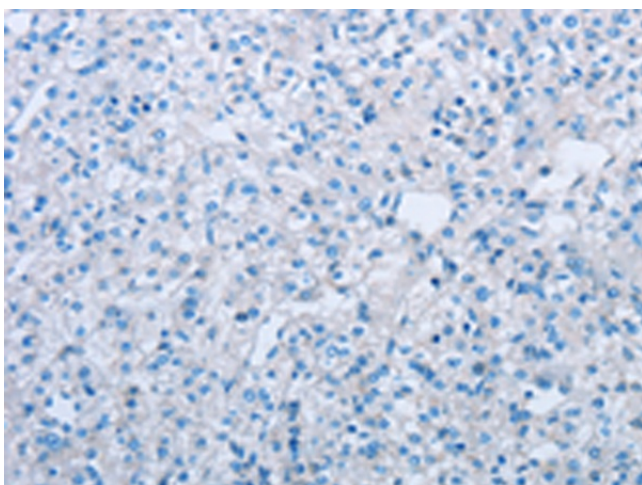
Immunohistochemistry of paraffin-embedded Human ovarian cancer tissue using [TA351343] (CERS4 Antibody) at dilution 1/35 (Original magnification: ×200)



Immunohistochemistry of paraffin-embedded Human ovarian cancer tissue using [TA351343] (CERS4 Antibody) at dilution 1/35, treated with synthetic peptide. (Original magnification: $\times 200$)



Immunohistochemistry of paraffin-embedded Human prostate cancer tissue using [TA351343] (CERS4 Antibody) at dilution 1/35 (Original magnification: $\times 200$)



Immunohistochemistry of paraffin-embedded Human prostate cancer tissue using [TA351343] (CERS4 Antibody) at dilution 1/35, treated with synthetic peptide. (Original magnification: $\times 200$)