

Product datasheet for **TA351341**

Ceramide synthase 1 (CERS1) Rabbit Polyclonal Antibody

Product data:

Product Type:	Primary Antibodies
Applications:	IHC, WB
Recommended Dilution:	WB: 500-2000 WB positive control: A172 cell lysate IHC: 50-200 Positive control: Human prostate cancer Predicted cell location: Cytoplasm
Reactivity:	Human, Mouse
Host:	Rabbit
Isotype:	IgG
Clonality:	Polyclonal
Immunogen:	Synthetic peptide of human CERS1
Formulation:	pH7.4 PBS, 0.05% NaN ₃ , 40% Glycerol
Concentration:	lot specific
Purification:	Antigen affinity purification
Conjugation:	Unconjugated
Storage:	Store at -20°C as received.
Stability:	Stable for 12 months from date of receipt.
Predicted Protein Size:	40 kDa
Gene Name:	ceramide synthase 1
Database Link:	NP_001277194 Entrez Gene 93898 Mouse Entrez Gene 10715 Human P27544



[View online »](#)

Background:

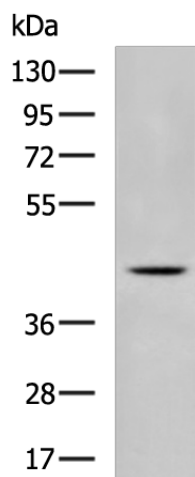
This gene encodes a member of the bone morphogenetic protein (BMP) family and the TGF-beta superfamily. This group of proteins is characterized by a polybasic proteolytic processing site that is cleaved to produce a mature protein containing seven conserved cysteine residues. Members of this family are regulators of cell growth and differentiation in both embryonic and adult tissues. Studies in yeast suggest that the encoded protein is involved in aging.

Synonyms:

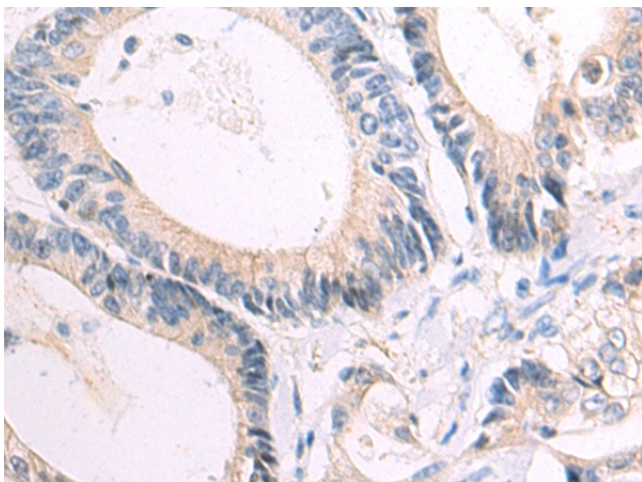
EPM8; LAG1; LASS1; UOG1

Protein Families:

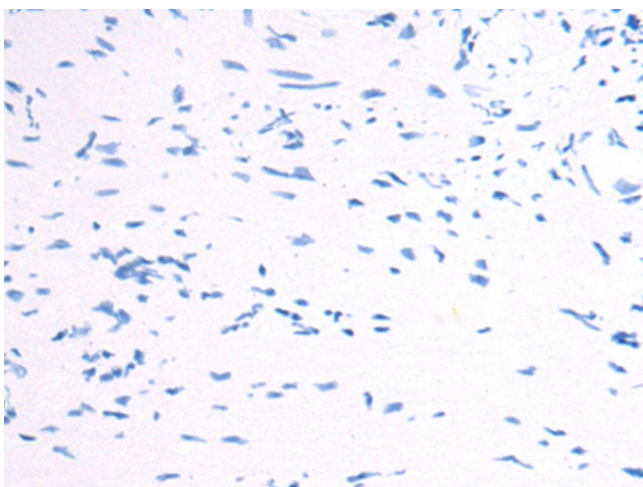
Druggable Genome

Product images:

Gel: 8%SDS-PAGE
Lysate: 40 μ g
Lane: A172 cell lysate
Primary antibody: TA351341 (CERS1 Antibody) at dilution 1/1000
Secondary antibody: Goat anti rabbit IgG at 1/5000 dilution
Exposure time: 1 minute



Immunohistochemistry of paraffin-embedded Human prostate cancer tissue using TA351341 (CERS1 Antibody) at dilution 1/50 (Original magnification: \times 200)



Immunohistochemistry of paraffin-embedded Human prostate cancer tissue using TA351341 (CERS1 Antibody) at dilution 1/50, treated with synthetic peptide. (Original magnification: $\times 200$)