

## Product datasheet for **TA351339S**

### LANPL (ANP32E) Rabbit Polyclonal Antibody

#### Product data:

Product Type:	Primary Antibodies
Applications:	IHC, WB
Recommended Dilution:	WB: 500-2000 WB positive control: Mouse thymus tissue IHC: 50-200 Positive control: Human ovarian cancer Predicted cell location: Cytoplasm and Nucleus
Reactivity:	Human, Mouse, Rat
Host:	Rabbit
Isotype:	IgG
Clonality:	Polyclonal
Immunogen:	Synthetic peptide of human ANP32E
Formulation:	pH7.4 PBS, 0.05% NaN <sub>3</sub> , 40% Glycerol
Purification:	Antigen affinity purification
Conjugation:	Unconjugated
Storage:	Store at -20°C as received.
Stability:	Stable for 12 months from date of receipt.
Predicted Protein Size:	31 kDa
Gene Name:	acidic nuclear phosphoprotein 32 family member E
Database Link:	<a href="#">NP_112182</a> <a href="#">Entrez Gene 66471 Mouse</a> <a href="#">Entrez Gene 361999 Rat</a> <a href="#">Entrez Gene 81611 Human</a> <a href="#">Q9BTT0</a>



[View online »](#)

**Background:**

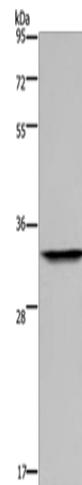
The Anp32 family consists of 32 evolutionarily-conserved proteins and is included within the superfamily of leucine-rich repeat (LRR) proteins. Leucine-rich acidic nuclear protein-like (LANPL), also called ANP32E or Cpd1, is a member of the Anp32 family. LANPL is located in the cytoplasm of peripheral blood leukocytes, colon, small intestine, prostate, thymus, spleen, skeletal muscle, liver and kidney. It has also been detected in the nucleus, cytoplasm and membrane of multiple brain regions. Upon phosphorylation, LANPL colocalizes and inhibits protein phosphatase 2A (PP2A), but does not inhibit PP1. LANPL modulates cell signalling and transduction of gene expression to regulate the morphology and dynamics of the cytoskeleton, cell adhesion, neural development and cerebellar morphogenesis.

**Synonyms:**

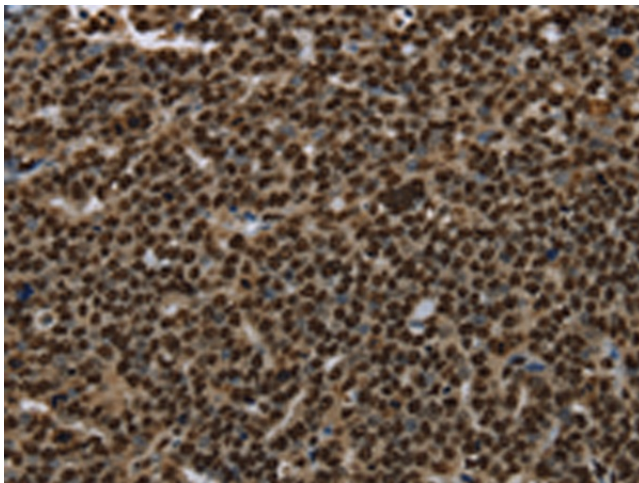
LANP-L; LANPL

**Protein Families:**

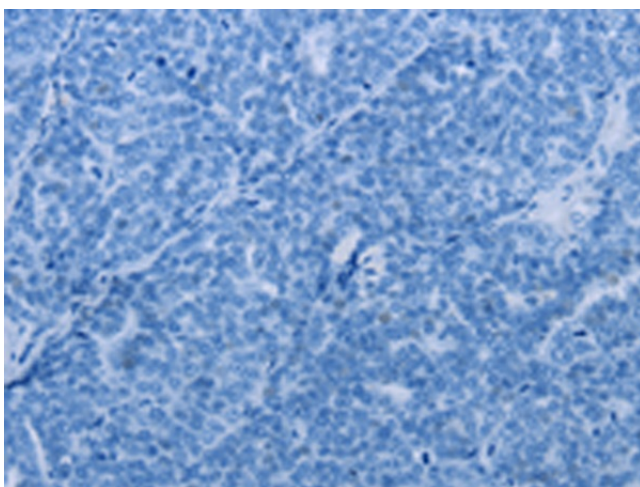
Druggable Genome

**Product images:**


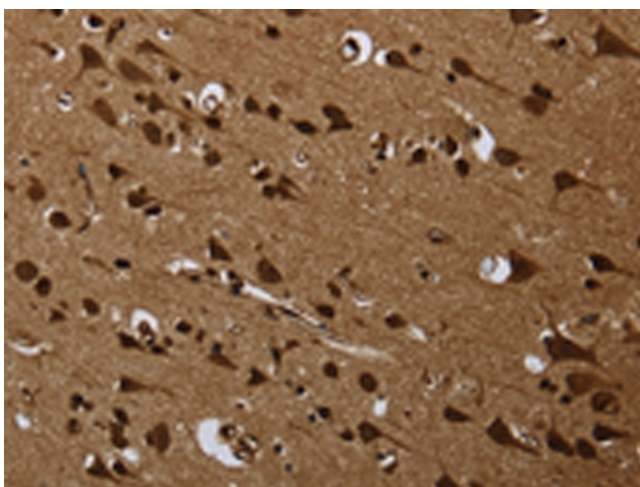
Gel: 10%SDS-PAGE  
 Lysate: 40 µg  
 Lane: Mouse thymus tissue  
 Primary antibody: [TA351339] (ANP32E Antibody) at dilution 1/300  
 Secondary antibody: Goat anti rabbit IgG at 1/8000 dilution  
 Exposure time: 20 seconds



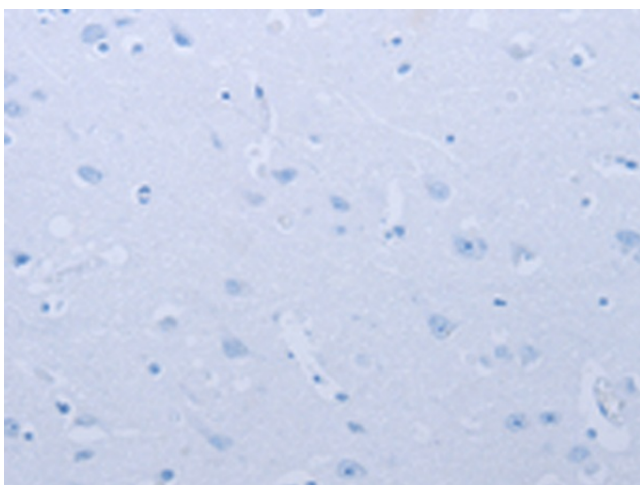
Immunohistochemistry of paraffin-embedded Human ovarian cancer tissue using [TA351339] (ANP32E Antibody) at dilution 1/25 (Original magnification: ×200)



Immunohistochemistry of paraffin-embedded Human ovarian cancer tissue using [TA351339] (ANP32E Antibody) at dilution 1/25, treated with synthetic peptide. (Original magnification: ×200)



Immunohistochemistry of paraffin-embedded Human brain tissue using [TA351339] (ANP32E Antibody) at dilution 1/25 (Original magnification: ×200)



Immunohistochemistry of paraffin-embedded Human brain tissue using [TA351339] (ANP32E Antibody) at dilution 1/25, treated with synthetic peptide. (Original magnification: ×200)