

## Product datasheet for **TA351338S**

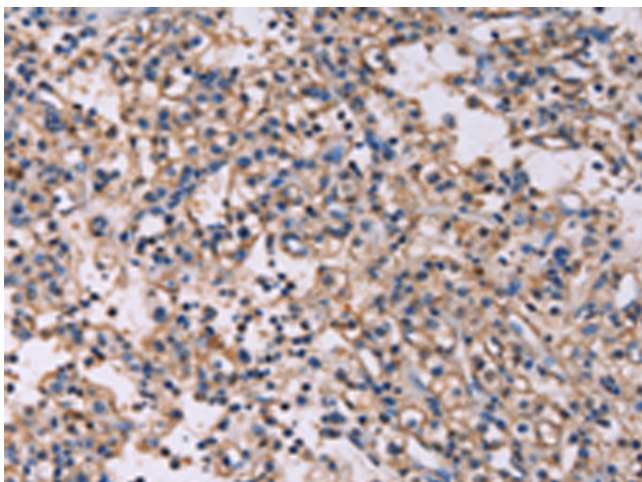
### **KSR1 Rabbit Polyclonal Antibody**

#### **Product data:**

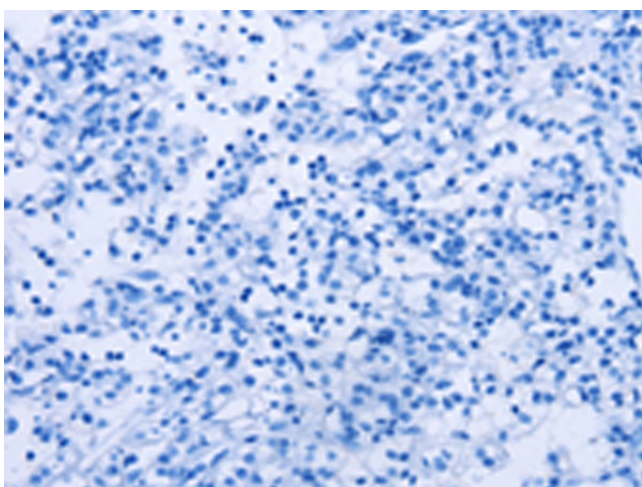
Product Type:	Primary Antibodies
Applications:	IHC
Recommended Dilution:	IHC: 25-100 Positive control: Human prostate cancer Predicted cell location: Cytoplasm
Reactivity:	Human, Mouse
Host:	Rabbit
Isotype:	IgG
Clonality:	Polyclonal
Immunogen:	Synthetic peptide of human KSR1
Formulation:	pH7.4 PBS, 0.05% NaN <sub>3</sub> , 40% Glycerol
Purification:	Antigen affinity purification
Conjugation:	Unconjugated
Storage:	Store at -20°C as received.
Stability:	Stable for 12 months from date of receipt.
Gene Name:	kinase suppressor of ras 1
Database Link:	<a href="#">NP_055053</a> <a href="#">Entrez Gene 16706 Mouse</a> <a href="#">Entrez Gene 8844 Human</a> <a href="#">Q8IVT5</a>
Background:	Kinase suppressor of Ras 1 is an enzyme that in humans is encoded by the KSR1 gene. Location-regulated scaffolding protein connecting MEK to RAF. Promotes MEK and RAF phosphorylation and activity through assembly of an activated signaling complex. By itself, it has no demonstrated kinase activity.
Synonyms:	KSR; RSU2
Protein Families:	Druggable Genome, Protein Kinase



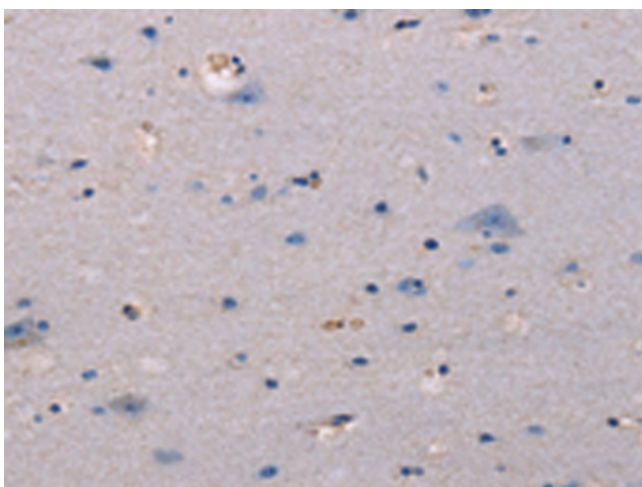
[View online »](#)

**Product images:**

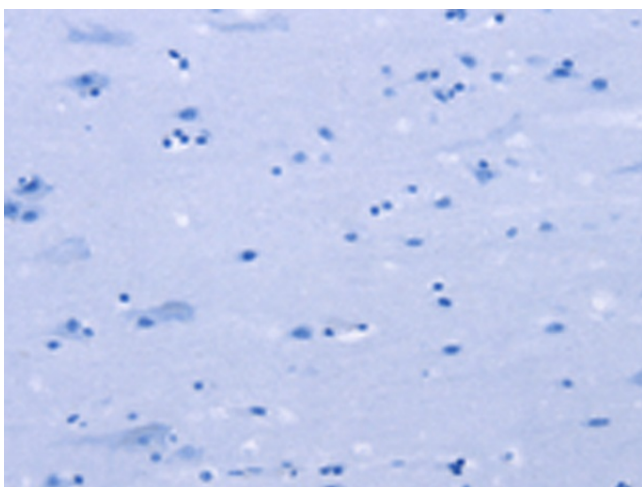
Immunohistochemistry of paraffin-embedded Human prostate cancer tissue using [TA351338] (KSR1 Antibody) at dilution 1/30 (Original magnification: ×200)



Immunohistochemistry of paraffin-embedded Human prostate cancer tissue using [TA351338] (KSR1 Antibody) at dilution 1/30, treated with synthetic peptide. (Original magnification: ×200)



Immunohistochemistry of paraffin-embedded Human brain tissue using [TA351338] (KSR1 Antibody) at dilution 1/30 (Original magnification: ×200)



Immunohistochemistry of paraffin-embedded Human brain tissue using [TA351338] (KSR1 Antibody) at dilution 1/30, treated with synthetic peptide. (Original magnification: ×200)