

## Product datasheet for **TA351335**

### KLLN Rabbit Polyclonal Antibody

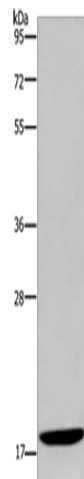
#### Product data:

Product Type:	Primary Antibodies
Applications:	WB
Recommended Dilution:	WB: 500-2000 WB positive control: Hela cells
Reactivity:	Human
Host:	Rabbit
Isotype:	IgG
Clonality:	Polyclonal
Immunogen:	Synthetic peptide of human KLLN
Formulation:	pH7.4 PBS, 0.05% NaN <sub>3</sub> , 40% Glycerol
Concentration:	lot specific
Purification:	Antigen affinity purification
Conjugation:	Unconjugated
Storage:	Store at -20°C as received.
Stability:	Stable for 12 months from date of receipt.
Predicted Protein Size:	20 kDa
Gene Name:	killin, p53-regulated DNA replication inhibitor
Database Link:	<a href="#">NP_001119521</a> <a href="#">Entrez Gene 100144748 Human</a> <a href="#">B2CW77</a>
Background:	The protein encoded by this intronless gene is found in the nucleus, where it can inhibit DNA synthesis and promote S phase arrest coupled to apoptosis. The expression of this DNA binding protein is upregulated by transcription factor p53.
Synonyms:	CWS4; KILLIN



[View online »](#)

## Product images:



Gel: 10%SDS-PAGE

Lysate: 40  $\mu$ g

Lane: Hela cells

Primary antibody: TA351335 (KLLN Antibody) at dilution 1/350

Secondary antibody: Goat anti rabbit IgG at 1/8000 dilution

Exposure time: 2 minutes