

## Product datasheet for **TA351328**

### KIF22 Rabbit Polyclonal Antibody

#### Product data:

Product Type:	Primary Antibodies
Applications:	IHC, WB
Recommended Dilution:	WB: 200-1000 WB positive control: A431, MCF-7 and Hela cells IHC: 50-200 Positive control: Human colon cancer Predicted cell location: Nucleus and Cytoplasm
Reactivity:	Human
Host:	Rabbit
Isotype:	IgG
Clonality:	Polyclonal
Immunogen:	Synthetic peptide of human KIF22
Formulation:	pH7.4 PBS, 0.05% NaN <sub>3</sub> , 40% Glycerol
Concentration:	lot specific
Purification:	Antigen affinity purification
Conjugation:	Unconjugated
Storage:	Store at -20°C as received.
Stability:	Stable for 12 months from date of receipt.
Predicted Protein Size:	73 kDa
Gene Name:	kinesin family member 22
Database Link:	<a href="#">NP_015556</a> <a href="#">Entrez Gene 3835 Human</a> <a href="#">Q14807</a>



[View online »](#)

**Background:**

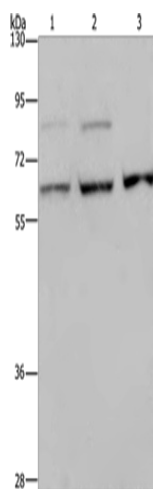
The protein encoded by this gene is a member of the kinesin-like protein family. The family members are microtubule-dependent molecular motors that transport organelles within cells and move chromosomes during cell division. The C-terminal half of this protein has been shown to bind DNA. Studies with the *Xenopus* homolog suggests its essential role in metaphase chromosome alignment and maintenance. Alternatively spliced transcript variants encoding different isoforms have been found for this gene.

**Synonyms:**

A-328A3.2; KID; KNLSL4; OBP; OBP-1; OBP-2; SEMDJL2

**Protein Families:**

Druggable Genome

**Product images:**

Gel: 8%SDS-PAGE

Lysate: 40  $\mu$ g

Lane 1-3: A431 cells

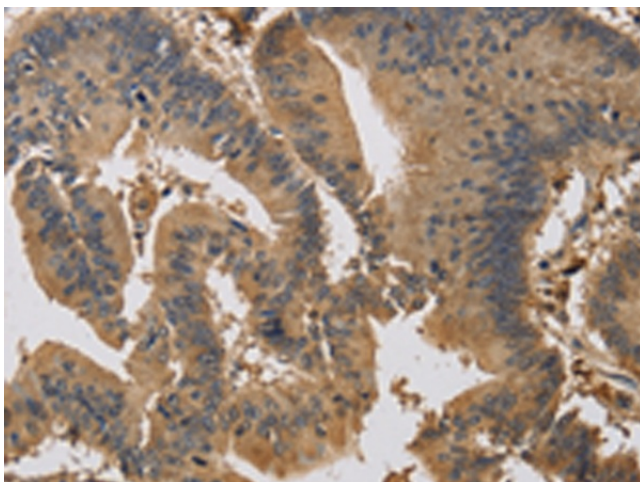
MCF7 cells

HeLa cells

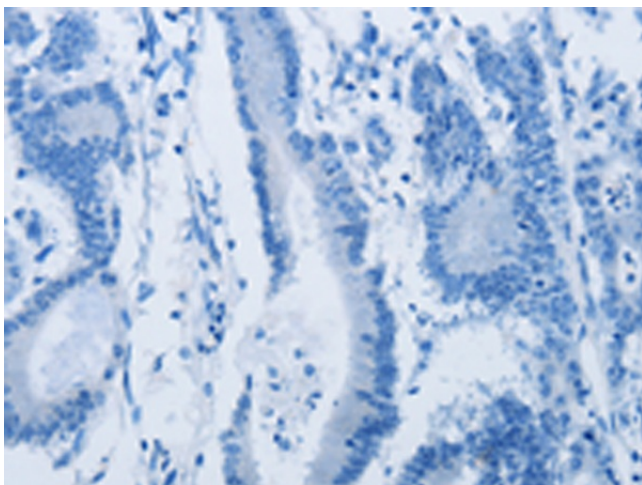
Primary antibody: TA351328 (KIF22 Antibody) at dilution 1/200

Secondary antibody: Goat anti rabbit IgG at 1/8000 dilution

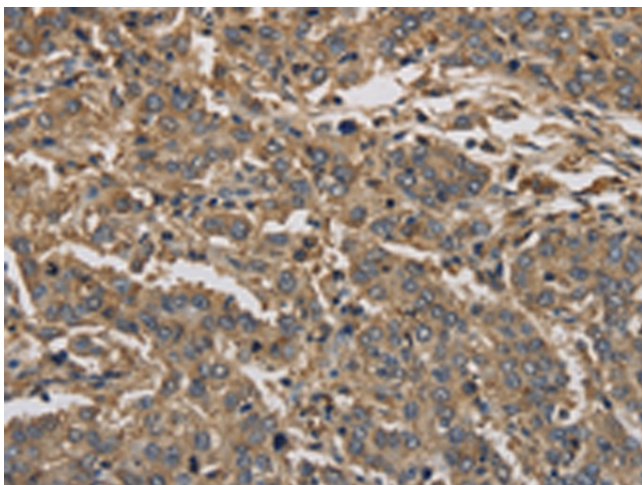
Exposure time: 10 minutes



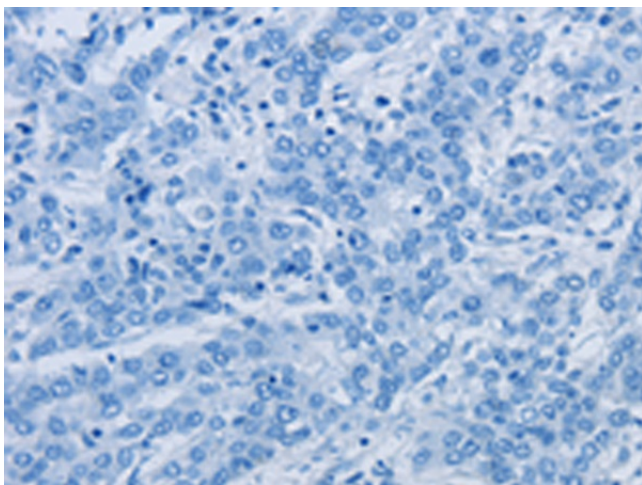
Immunohistochemistry of paraffin-embedded Human colon cancer tissue using TA351328 (KIF22 Antibody) at dilution 1/30 (Original magnification:  $\times 200$ )



Immunohistochemistry of paraffin-embedded Human colon cancer tissue using TA351328 (KIF22 Antibody) at dilution 1/30, treated with synthetic peptide. (Original magnification: ×200)



Immunohistochemistry of paraffin-embedded Human liver cancer tissue using TA351328 (KIF22 Antibody) at dilution 1/30 (Original magnification: ×200)



Immunohistochemistry of paraffin-embedded Human liver cancer tissue using TA351328 (KIF22 Antibody) at dilution 1/30, treated with synthetic peptide. (Original magnification: ×200)