

## Product datasheet for **TA351325**

### **KDM5B Rabbit Polyclonal Antibody**

#### **Product data:**

Product Type:	Primary Antibodies
Applications:	IHC, WB
Recommended Dilution:	ELISA: 1000-2000, WB: 200-1000, IHC: 50-200
Reactivity:	Human, Mouse
Host:	Rabbit
Isotype:	IgG
Clonality:	Polyclonal
Immunogen:	Synthetic peptide of human KDM5B
Formulation:	pH7.4 PBS, 0.05% NaN <sub>3</sub> , 40% Glycerol
Concentration:	lot specific
Purification:	Antigen affinity purification
Conjugation:	Unconjugated
Storage:	Store at -20°C as received.
Stability:	Stable for 12 months from date of receipt.
Predicted Protein Size:	176 kDa
Gene Name:	lysine demethylase 5B
Database Link:	<a href="#">NP_006609</a> <a href="#">Entrez Gene 10765 Human Q9UGL1</a>

**Background:** PLU-1 is a large (1,544 amino acid) nuclear protein that interacts with brain factor-1 (BF-1) and paired box 9 (PAX9), both of which are developmental transcription factors. PLU-1 belongs to the testis-cancer antigen group of proteins and is a member of the ARID family of DNA binding proteins. It is a multi-domain protein with strong transcriptional repression properties. PLU-1 shows restricted expression in adult tissues, with high expression in testis and transient expression in the pregnant mammary gland. Both the PLU-1 gene and the PLU-1 protein product are specifically upregulated in breast cancer. PLU-1 may be important in meiotic transcription because of its apparent association with chromatin.

**Synonyms:** CT31; JARID1B; PLU-1; PLU1; PPP1R98; PUT1; RBBP2H1A



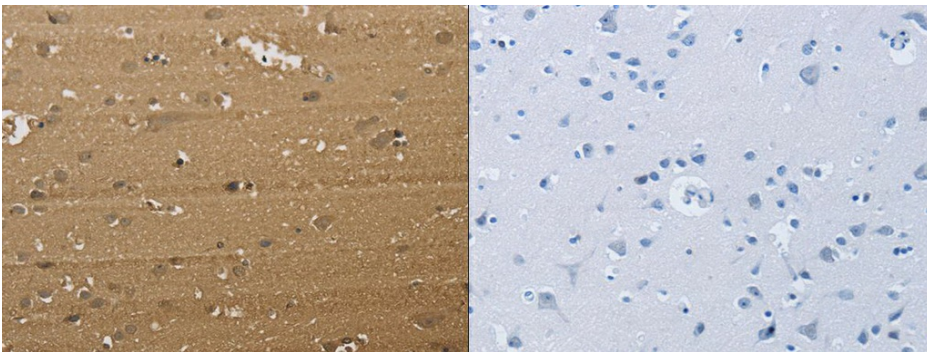
[View online »](#)

Protein Families: Druggable Genome, Transcription Factors

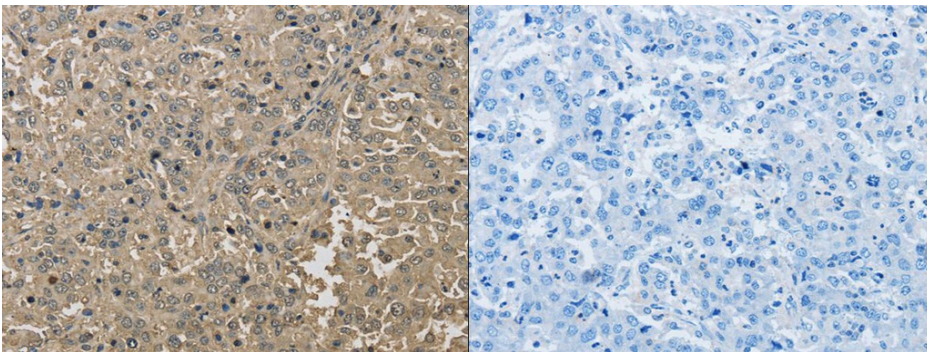
### Product images:



Gel: 6%SDS-PAGE, Lysate: 40 ug, Lane 1-2: HeLa cells, MCF7 cells, Primary antibody: (KDM5B Antibody) at dilution 1/200, Secondary antibody: Goat anti rabbit IgG at 1/8000 dilution, Exposure time: 10 minutes



The image on the left is immunohistochemistry of paraffin-embedded Human brain tissue using (KDM5B Antibody) at dilution 1/40, on the right is treated with synthetic peptide. (Original magnification:  $\times 200$ )



The image on the left is immunohistochemistry of paraffin-embedded Human liver cancer tissue using (KDM5B Antibody) at dilution 1/40, on the right is treated with synthetic peptide. (Original magnification:  $\times 200$ )