

## Product datasheet for **TA351322S**

### KCNMB4 Rabbit Polyclonal Antibody

#### Product data:

Product Type:	Primary Antibodies
Applications:	IHC, WB
Recommended Dilution:	WB: 500-2000 WB positive control: Mouse brain tissue IHC: 50-200 Positive control: Human liver cancer Predicted cell location: Cytoplasm
Reactivity:	Human, Mouse, Rat
Host:	Rabbit
Isotype:	IgG
Clonality:	Polyclonal
Immunogen:	Synthetic peptide of human KCNMB4
Formulation:	pH7.4 PBS, 0.05% NaN <sub>3</sub> , 40% Glycerol
Purification:	Antigen affinity purification
Conjugation:	Unconjugated
Storage:	Store at -20°C as received.
Stability:	Stable for 12 months from date of receipt.
Predicted Protein Size:	24 kDa
Gene Name:	potassium calcium-activated channel subfamily M regulatory beta subunit 4
Database Link:	<a href="#">NP_055320</a> <a href="#">Entrez Gene 58802 MouseEntrez Gene 66016 RatEntrez Gene 27345 Human Q86W47</a>

**Background:** MaxiK channels are large conductance, voltage and calcium-sensitive potassium channels which are fundamental to the control of smooth muscle tone and neuronal excitability. MaxiK channels can be formed by 2 subunits: the pore-forming alpha subunit and the modulatory beta subunit. The protein encoded by this gene is an auxiliary beta subunit which slows activation kinetics, leads to steeper calcium sensitivity, and shifts the voltage range of current activation to more negative potentials than does the beta 1 subunit.



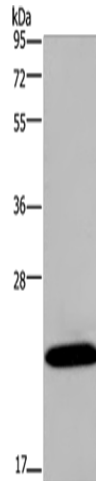
[View online »](#)

**Synonyms:** beta member 4; calcium-activated potassium channel beta 4 subunit; large conductance calcium-dependent potassium ion channel beta 4 subunit; potassium large conductance calcium-activated channel; subfamily M

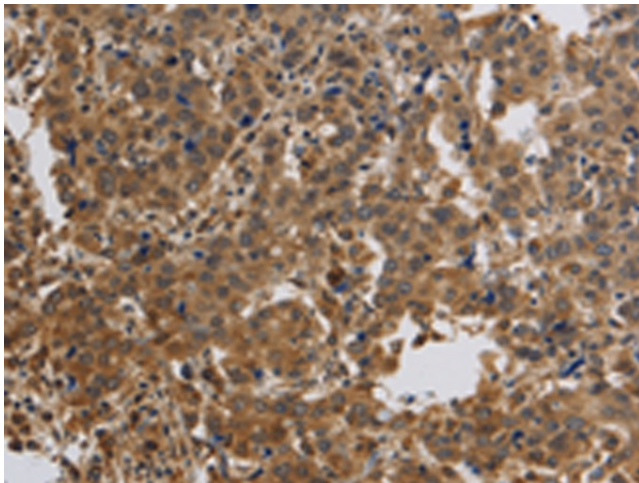
**Protein Families:** Druggable Genome, Ion Channels: Other, Transmembrane

**Protein Pathways:** Vascular smooth muscle contraction

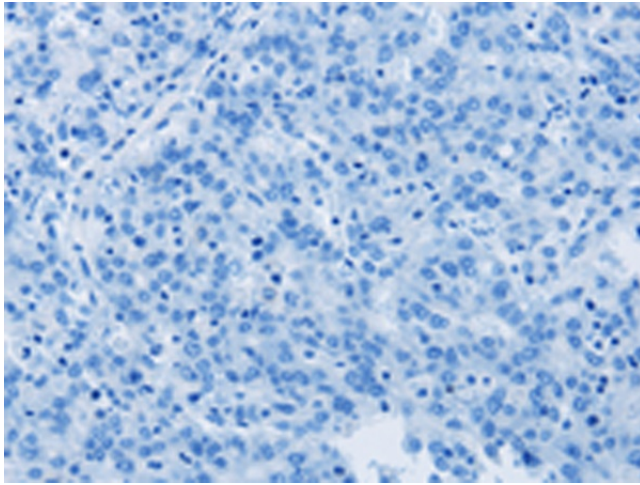
**Product images:**



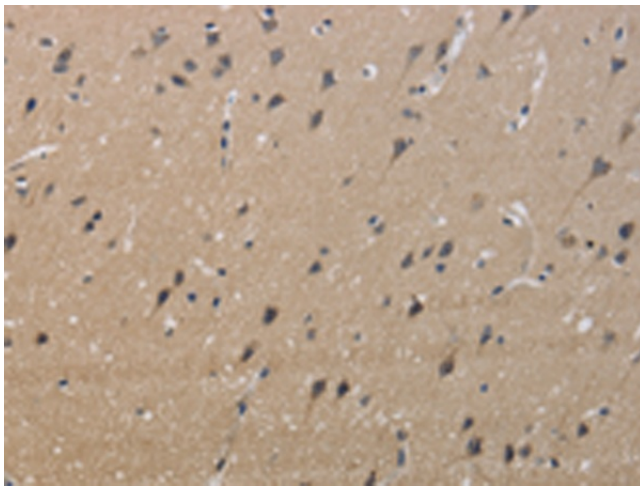
Gel: 10%SDS-PAGE  
Lysate: 40  $\mu$ g  
Lane: Mouse brain tissue  
Primary antibody: [TA351322] (KCNMB4 Antibody) at dilution 1/500  
Secondary antibody: Goat anti rabbit IgG at 1/8000 dilution  
Exposure time: 1 minute



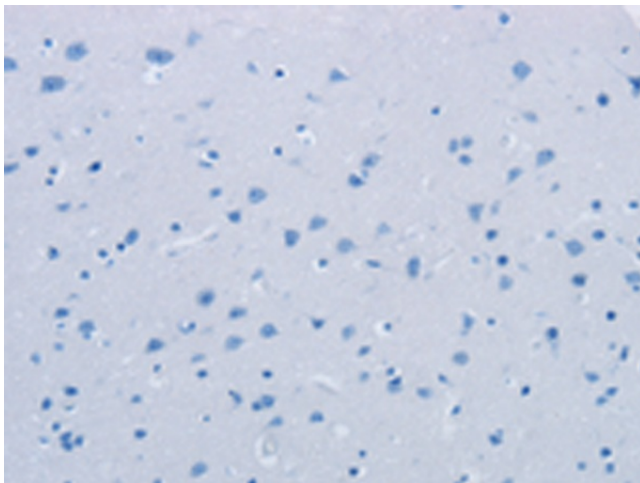
Immunohistochemistry of paraffin-embedded Human liver cancer tissue using [TA351322] (KCNMB4 Antibody) at dilution 1/40 (Original magnification:  $\times$ 200)



Immunohistochemistry of paraffin-embedded Human liver cancer tissue using [TA351322] (KCNMB4 Antibody) at dilution 1/40, treated with synthetic peptide. (Original magnification: ×200)



Immunohistochemistry of paraffin-embedded Human brain tissue using [TA351322] (KCNMB4 Antibody) at dilution 1/40 (Original magnification: ×200)



Immunohistochemistry of paraffin-embedded Human brain tissue using [TA351322] (KCNMB4 Antibody) at dilution 1/40, treated with synthetic peptide. (Original magnification: ×200)