

## Product datasheet for **TA351321S**

### KCNMB3 Rabbit Polyclonal Antibody

#### Product data:

Product Type:	Primary Antibodies
Applications:	IHC, WB
Recommended Dilution:	WB: 200-1000 WB positive control: Hepg2 cells IHC: 50-200 Positive control: Human liver cancer Predicted cell location: Cytoplasm
Reactivity:	Human
Host:	Rabbit
Isotype:	IgG
Clonality:	Polyclonal
Immunogen:	Synthetic peptide of human KCNMB3
Formulation:	pH7.4 PBS, 0.05% NaN <sub>3</sub> , 40% Glycerol
Purification:	Antigen affinity purification
Conjugation:	Unconjugated
Storage:	Store at -20°C as received.
Stability:	Stable for 12 months from date of receipt.
Predicted Protein Size:	32 kDa
Gene Name:	potassium calcium-activated channel subfamily M regulatory beta subunit 3
Database Link:	<a href="#">NP_741979</a> <a href="#">Entrez Gene 27094 Human</a> <a href="#">Q9NPA1</a>



[View online »](#)

**Background:**

MaxiK channels are large conductance, voltage and calcium-sensitive potassium channels which are fundamental to the control of smooth muscle tone and neuronal excitability. MaxiK channels can be formed by 2 subunits: the pore-forming alpha subunit and the modulatory beta subunit. The protein encoded by this gene is an auxiliary beta subunit which may partially inactivate or slightly decrease the activation time of MaxiK alpha subunit currents. Alternative splicing results in multiple transcript variants. A related pseudogene has been identified on chromosome 22.

**Synonyms:**

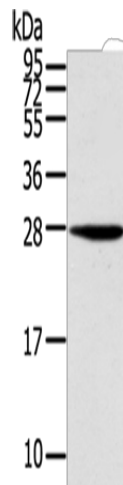
BKBETA3; HBETA3; K(VCA)BETA-3; KCNMB2; KCNMBL; SLO-BETA-3; SLOBETA3

**Protein Families:**

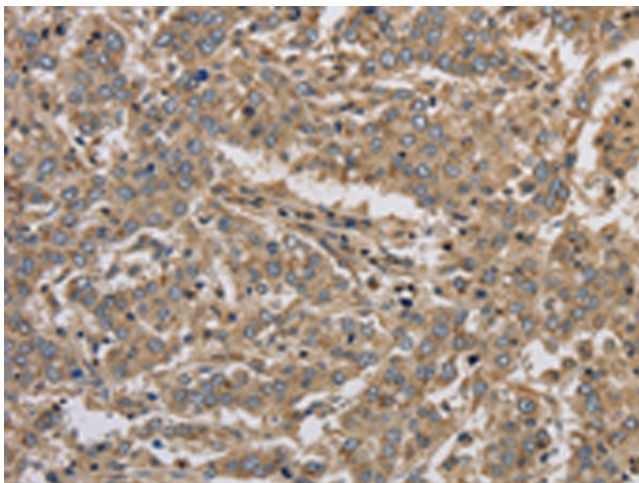
Druggable Genome, Ion Channels: Other, Transmembrane

**Protein Pathways:**

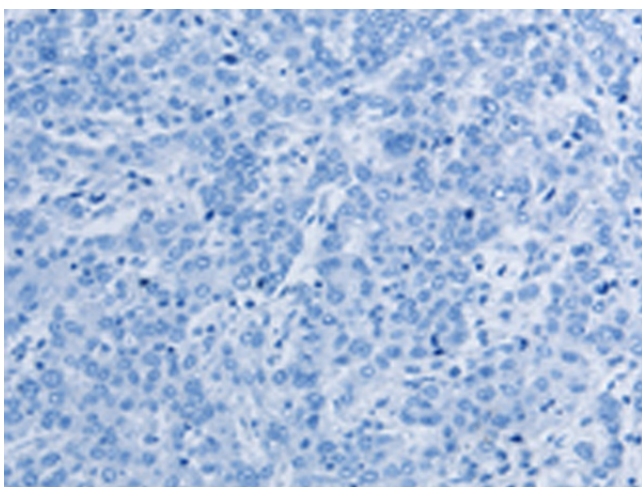
Vascular smooth muscle contraction

**Product images:**

Gel: 12%SDS-PAGE  
Lysate: 40 µg  
Lane: Hepg2 cells  
Primary antibody: [TA351321] (KCNMB3 Antibody) at dilution 1/400  
Secondary antibody: Goat anti rabbit IgG at 1/8000 dilution  
Exposure time: 1 minute



Immunohistochemistry of paraffin-embedded Human liver cancer tissue using [TA351321] (KCNMB3 Antibody) at dilution 1/40 (Original magnification: ×200)



Immunohistochemistry of paraffin-embedded Human liver cancer tissue using [TA351321] (KCNMB3 Antibody) at dilution 1/40, treated with synthetic peptide. (Original magnification: ×200)