

Product datasheet for **TA351320S**

KCNMB2 Rabbit Polyclonal Antibody

Product data:

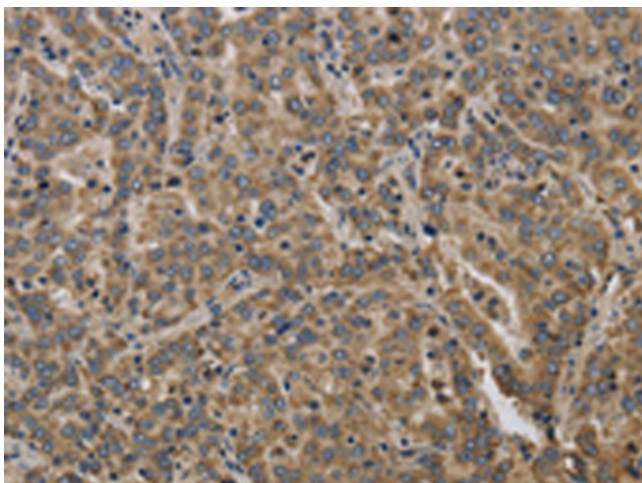
Product Type:	Primary Antibodies
Applications:	IHC
Recommended Dilution:	IHC: 50-200 Positive control: Human liver cancer Predicted cell location: Cytoplasm
Reactivity:	Human, Mouse, Rat
Host:	Rabbit
Isotype:	IgG
Clonality:	Polyclonal
Immunogen:	Synthetic peptide of human KCNMB2
Formulation:	pH7.4 PBS, 0.05% NaN ₃ , 40% Glycerol
Purification:	Antigen affinity purification
Conjugation:	Unconjugated
Storage:	Store at -20°C as received.
Stability:	Stable for 12 months from date of receipt.
Gene Name:	potassium calcium-activated channel subfamily M regulatory beta subunit 2
Database Link:	NP_005823 Entrez Gene 72413 Mouse Entrez Gene 294961 Rat Entrez Gene 10242 Human Q9Y691
Background:	MaxiK channels are large conductance, voltage and calcium-sensitive potassium channels which are fundamental to the control of smooth muscle tone and neuronal excitability. MaxiK channels can be formed by 2 subunits: the pore-forming alpha subunit and the modulatory beta subunit. The protein encoded by this gene is an auxiliary beta subunit which decreases the activation time of MaxiK alpha subunit currents. Alternative splicing results in multiple transcript variants of this gene. Additional variants are discussed in the literature, but their full length nature has not been described.
Synonyms:	MGC22431
Protein Families:	Druggable Genome, Ion Channels: Other, Transmembrane



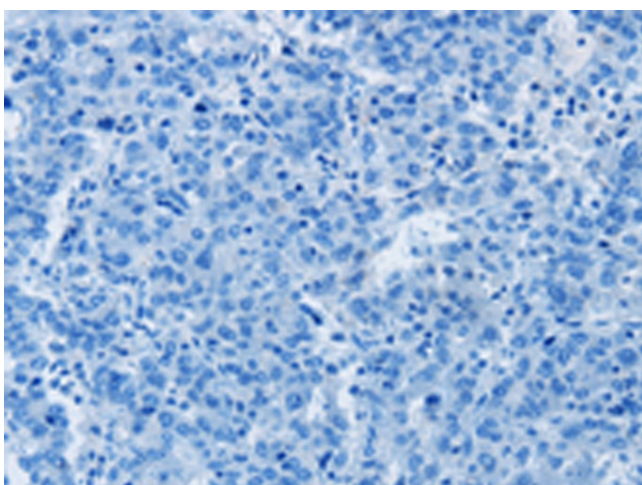
[View online »](#)

Protein Pathways: Vascular smooth muscle contraction

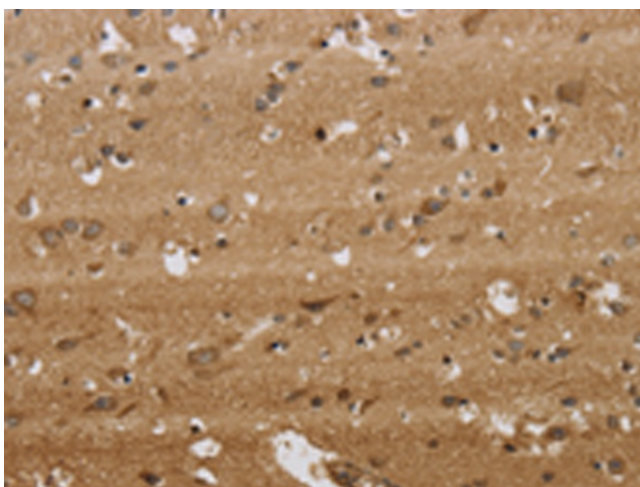
Product images:



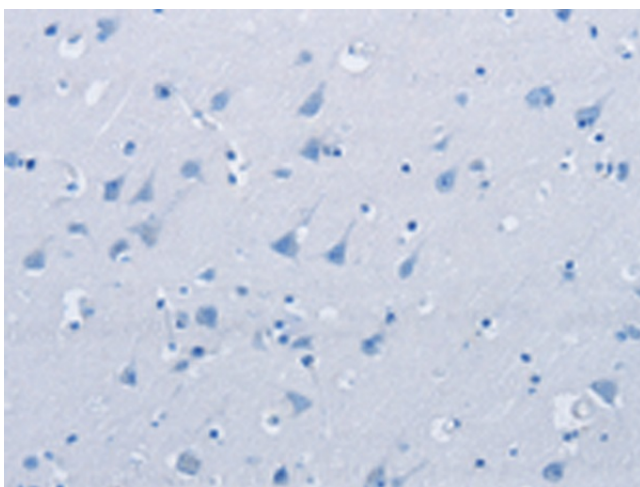
Immunohistochemistry of paraffin-embedded Human liver cancer tissue using [TA351320] (KCNMB2 Antibody) at dilution 1/40 (Original magnification: ×200)



Immunohistochemistry of paraffin-embedded Human liver cancer tissue using [TA351320] (KCNMB2 Antibody) at dilution 1/40, treated with synthetic peptide. (Original magnification: ×200)



Immunohistochemistry of paraffin-embedded Human brain tissue using [TA351320] (KCNMB2 Antibody) at dilution 1/40 (Original magnification: ×200)



Immunohistochemistry of paraffin-embedded Human brain tissue using [TA351320] (KCNMB2 Antibody) at dilution 1/40, treated with synthetic peptide. (Original magnification: ×200)